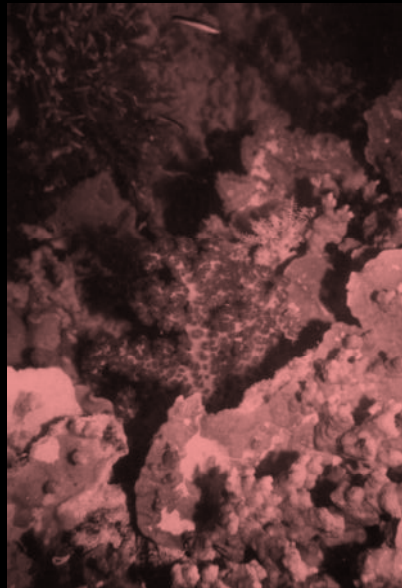
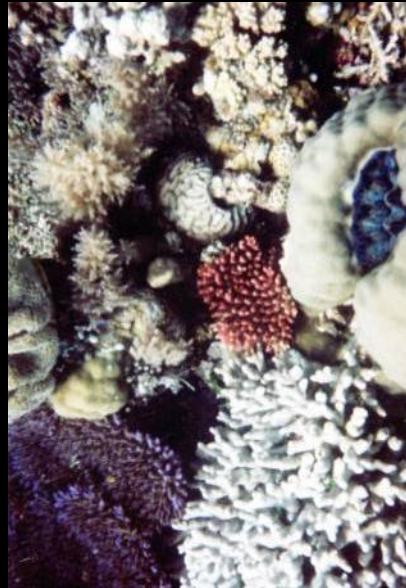


STATUS of CORAL TRIANGLE INITIATIVE (CTI)

ON CORAL REEFS, FISHERIES AND FOOD SECURITIES

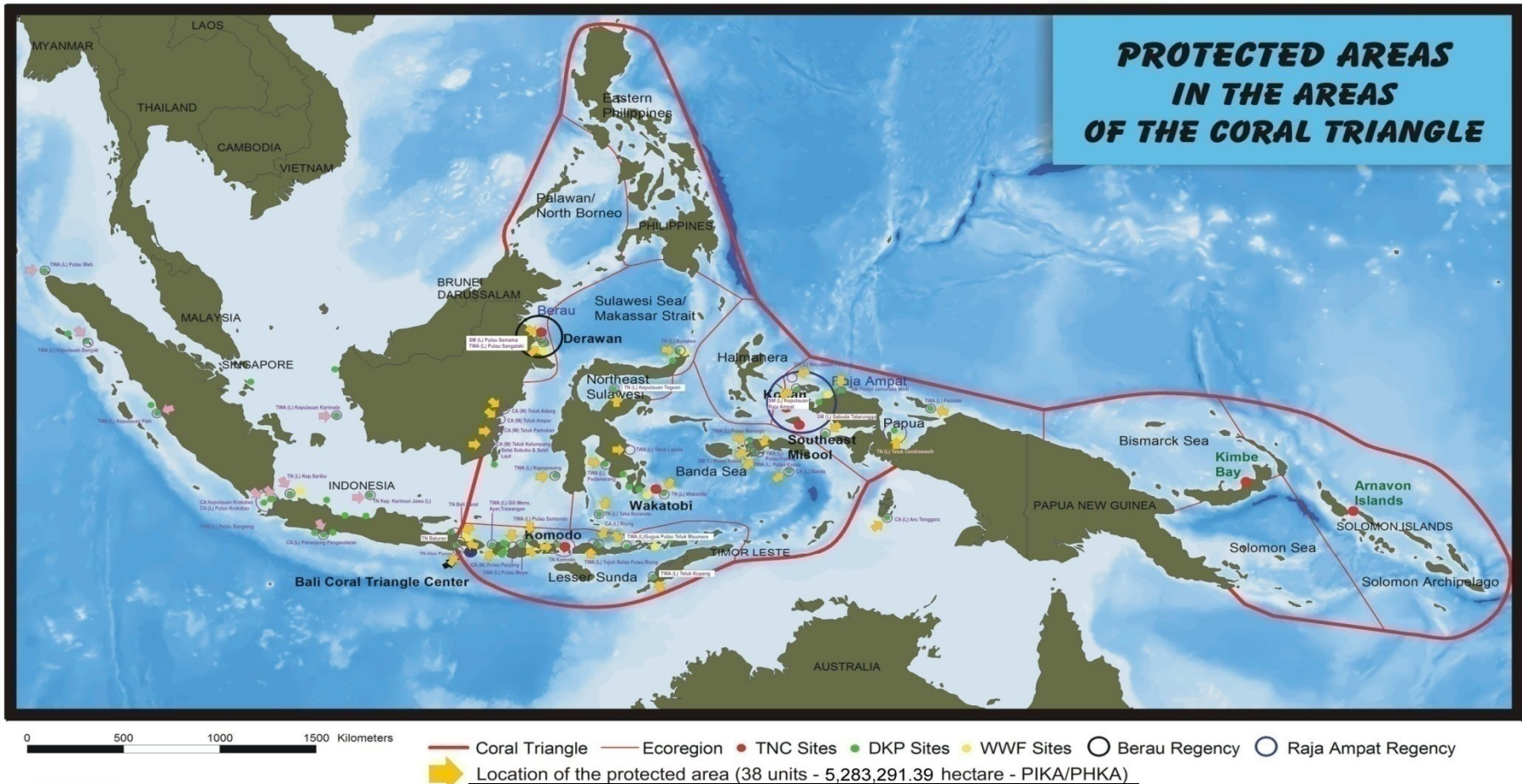


Presented By:
CHERRYTA YUNIA
Ministry of Forestry
The Republic of Indonesia

ICRI – GM
Monaco, Jan 2010

The Coral Triangle*

PROTECTED AREAS IN THE AREAS OF THE CORAL TRIANGLE



* Scientists define a "core" Coral Triangle Area based on the highest levels of coral diversity (at least 500 species of hard coral), covering six countries: the Philippines, Malaysia (Sabah), Indonesia (central and eastern), East Timor, Papua New Guinea, and the Solomon Islands. The Coral Triangle Region includes additional neighboring countries, such as Australia and Japan, with high levels of marine diversity and close linkages to these six countries.

Definition of Coral Triangle (CT) area. Indonesia (Central and Eastern), East Timor, the Philippines, Malaysia (Sabah), Papua New Guinea and the Solomon Islands.

Coral Triangle: richest marine life on the planet. The CT, sometimes referred to as the "Amazon of the Seas", is the epicenter of marine life abundance and diversity on the planet. In some areas, it has more than 600 coral species (more than 75% of all known coral species), 53% of the world's coral reefs, 3,000 fish species, and the greatest extent of mangrove forests of any region in the world. In addition, the CT serves as the spawning and juvenile growth areas for what is the largest tuna fishery in the world.

CT BIODIVERSITY AND PRODUCTIVITY UNDER THREAT

- OVER 80% **CORAL REEFS ARE AT MAJOR RISK**- COASTAL DEVELOPMENT AND OVERFISHING
- **COASTAL FISHERIES** ARE UNDER INCREASING **PRESSURE**
- **COMMERCIAL PELAGIC STOCKS** (TUNA AND SMALL PELAGICS) IN DANGER OF **COLLAPSE**
- SHARKS SEVERELY DIMINISHED
- **CLIMATE CHANGE** WILL **EXACERBATE** THE EFFECTS OF THESE TRENDS- MASS BLEACHING, OCEAN ACIDIFICATION, SEA LEVEL RISE



Guiding Principle

CTI SHOULD BE :

1. **SUPPORT PEOPLE**-CENTERED BIODIVERSITY CONSERVATION, SUSTAINABLE DEVELOPMENT, POVERTY REDUCTION AND EQUITABLE BENEFIT SHARING
2. BASED ON **SOLID SCIENCE**
3. CENTERED ON QUANTITATIVE GOALS DAN TIMETABLES ADOPTED BY GOVERNMENTS AT THE **HIGHEST POLITICAL LEVELS**
4. USE EXISTING AND FUTURE FORUMS TO **PROMOTE IMPLEMENTATION** RELEVANT EXISTING FORUM SHOULD BE USED TO IMPLEMENT ACTIONS UNDER CTI
5. ALIGNED WITH **INTERNATIONAL AND REGIONAL COMMITMENTS**
6. RECOGNIZE THE **TRANSBOUNDARY NATURE** OF SOME IMPORTANT MARINE NATURAL RESOURCES
7. EMPASIZE **PRIORITY GEOGRAPHIES**
8. INCLUSIVE AND ENGAGE **MULTIPLE STAKEHOLDERS**
9. RECOGNIZE THE **UNIQUENESS, FRAGILITY DAN VULNERABILITY** OF ISLAND ECOSYSTEM

FOUNDATION STONE

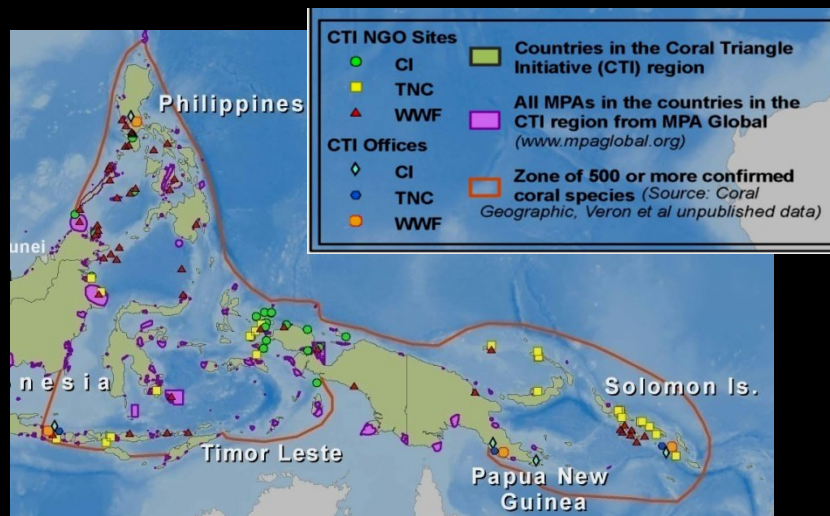
#1: GOVERNMENT OWNERSHIP

#2: REGIONAL VISION

#3: NATIONAL ACTION PLANS (NPOAS) & ALLIANCES

#4: NGO CONSORTIUM

#5: EARLY PUBLIC FUNDING



WORKING GROUP PRIORITY PROGRAMS - 2010

WG 1 . *Priority Seascapes Designated and Effectively Managed*

- DEVELOPMENT PLAN OF PAPUA SEASCAPE AND ANAMBAS SEASCAPE
- PARTNERSHIP ON MANAGEMENT OF TOMINI BAY MARINE AREA
- PARTNERSHIP ON MANAGEMENT OF KARIMATA STRAIT FISHERIES AREA
- DEVELOPMENT OF PRIORITY SEASCAPES SPASIAL DATABASE

WG 2 : *Ecosystem Approach to Management of Fisheries (EAFM) and other Marine Resources Fully Applied*

- MANAGEMENT PLAN OF FISHERIES AREA (SOUTH CHINA SEA, KARIMATA STRAIT, NATUNA SEA AND ARAFURA SEA)
- FISHERIES LOGBOOK
- SHIP REGISTER ON RFMO
- FISHERIES REGULATION ON SPECIES AND SIZE
- CERTIFICATION SCHEME ON FISHERIES PROCESS AND PRODUCT

WG 3 : *Marine Protected Areas Established & Effectively Managed*

- DESIGNATED AND LEGALIZATION OF NEW MPA
- ECONOMIC RESOURCES VALUATION RESEARCH
- FINALIZATION AND SOCIALIZATION OF GUIDELINES AND MINISTERIAL DECREE RELATED TO MPA AND MPA NETWORK
- MANAGEMENT PLAN OF NATIONAL AND LOCAL MPA
- CAPACITY BUILDING FOR NEW DESIGNATED MPA (INSTITUTIONAL, HR, FINANCIAL)

WG 4 : *Climate Change Adaptation Measures Achieved*

- TECHNICAL MEETING ON CLIMATE CHANGE VULNERABILITY
- STRATEGIC PLAN CLIMATE CHANGE ADAPTATION AND MITIGATION
- DEVELOPMENT OF COASTAL AND SMALL ISLAND SECURITY IN RESPONSE TO CLIMATE CHANGE
- CAPACITY BUILDING THROUGH COMMUNICATIONS AND OUTREACH TO COASTAL COMMUNITIES ON CLIMATE CHANGE IMPACT AND ITS ADAPTATION
- DATA AND INFORMATION RELATED TO CLIMATE CHANGE

WG. 5. *Threatened Species Status improving*

- CAPACITY BUILDING FOR CITES IMPLEMENTATION
- PILOT PROJECT OF TURTLE HATCHING



CTI FINANCIAL SUPPORT (PLEDGE)

INDONESIA

- FULL FINANCIAL SUPPORT FOR DAILY ACTIVITIES FOR THE CTI REGIONAL SECRETARIAT IF IT IS ESTABLISHED IN INDONESIA,
- US\$ 5 MILLION.

PAPUA NG

= US\$ 2 MILLION.

PHILIPINES

= US\$ 5 MILLION.

MALAYSIA

= US\$ 1 MILLION.

GEF

= US\$ 63 MILLION.

TOTAL

(6 CTs' + 2 US and Australia ;
ADB, GEF, TNC, WWF, CI)

= US\$ 117 MILLION.



IMPORTANT RESULT CTI MM 5TH

(Salomon, Nov 09)

- ESTABLISHMENT OF CTI REGIONAL SECRETARIAT = INDONESIA
- SELECTION OF CHAIRPERSON FOR CTI COUNCIL OF MINISTERS = SALOMON ISLAND
- AGREED ON CTI IMPLEMENTATION ROADMAP 2010-2011
 - Implementation of National Plan of Action in each CT country
 - Interim Regional Secretariat supported
 - CTI Business Summit
 - Regional Secretariat related activities supported
 - Regional Planning Program Workshop
- CTI JOINT COMMUNIQUE ON CLIMATE CHANGE
- SUSTAINABLE FINANCIAL PLANNING



SUPPORT NEEDED

- EXPERT **SUPPORT TO DEVELOP** CTI PLAN OF ACTION
- **TARGETED RESEARCH** ESPECIALLY on MPAs NETWORK, CLIMATE CHANGE ADAPTATION AND THREATENED SPECIES STATUS;
- **DATA SHARING ON** LARGE SCALE CORAL REEF AND RELATED ECOSYSTEM COVERAGE
- DEVELOPMENT OF **MPA NETWORK**
- ESTABLISHMENT OF **A RAPID ALERT SYSTEM** FOR MARINE BIODIVERSITY
- **CAPACITY BUILDING** FOR LOCAL EXPERT / PARK MANAGER
- **MANAGEMENT EFFECTIVENESS** STUDIES / ASSESSMENT





Lets Think about the Future of Our Oceans.....

THANK YOU.....