

# *UNEP's Caribbean Environment Programme (CEP)*

## *The Specially Protected Areas and Wildlife Protocol (SPA-W) and the Regional Activity Centre for SPAW Protocol (SPA-W-RAC)*



Alessandra Vanzella-Khoury, SPAW Secretariat  
Helene Souan, Director, SPAW-RAC

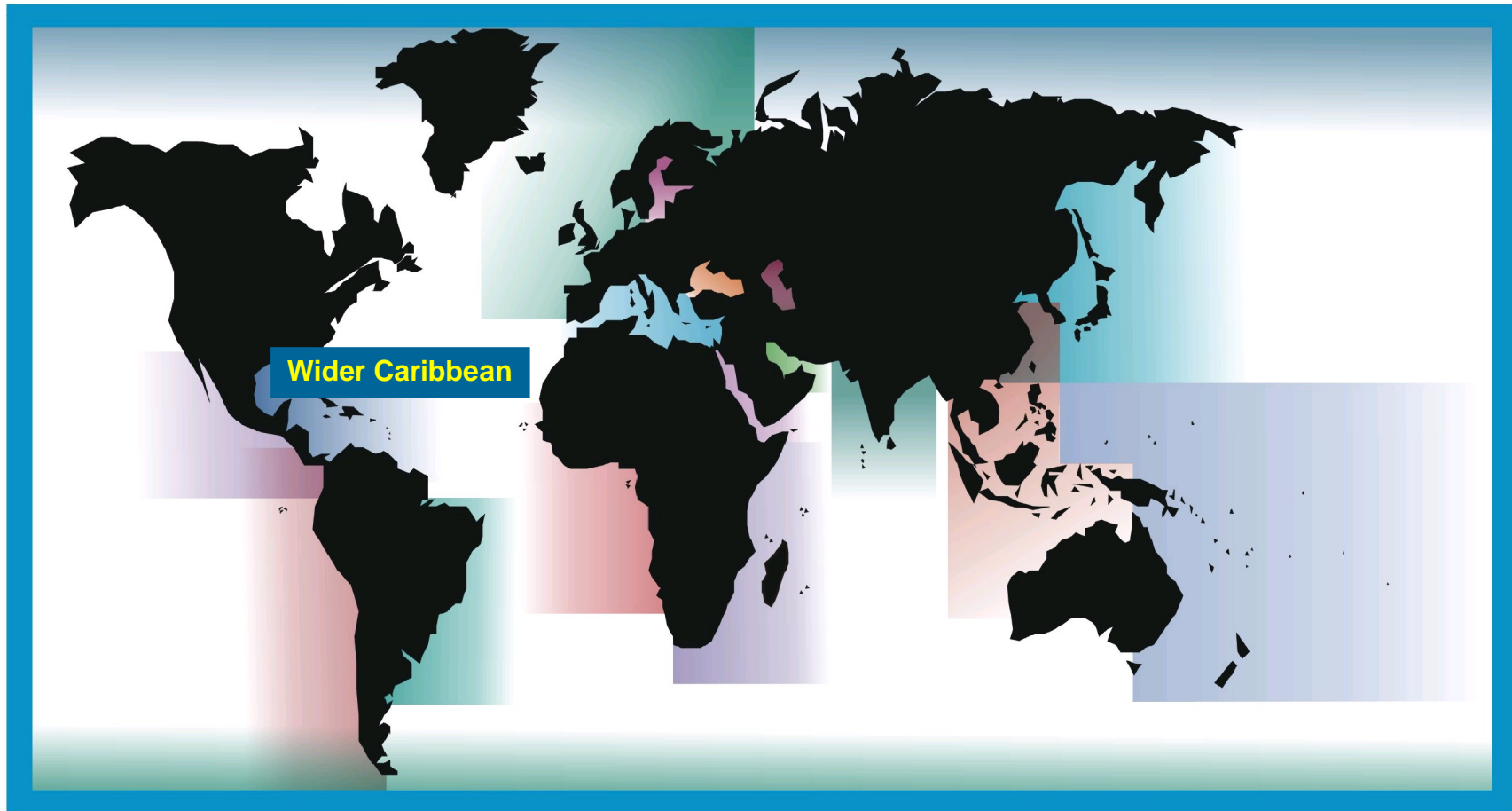


# 18 Regional Seas Programmes

## 140 Countries



# Regional Seas



West to East: North-East Pacific South-East Pacific Wider Caribbean Upper South-West Atlantic West & Central Africa  
Mediterranean Black Sea Eastern Africa Red Sea & Gulf of Aden ROPME Sea Area South Asian Seas East Asian Seas  
North-West Pacific South Pacific Partner programmes: Arctic North-East Atlantic Baltic Caspian Antarctic





- [illegible]



# The Wider Caribbean Region

## Island Nations

1. Antigua & Barbuda
2. Bahamas
3. Barbados
4. Cuba
5. Dominica
6. Dominican Republic
7. Grenada
8. Haiti
9. Jamaica
10. St. Kitts & Nevis
11. St. Lucia
12. St. Vincent and the Grenadines
13. Trinidad & Tobago

## Continental Nations

1. Belize
2. Colombia
3. Costa Rica
4. Guatemala
5. Guyana
6. Honduras
7. Mexico
8. Nicaragua
9. Panama
10. Surinam
11. USA
12. Venezuela

## Territories

1. Aruba
2. Netherlands Antilles
3. Anguilla
4. Cayman Islands
5. Monserrat
6. Turks & Caicos Islands
7. British Virgin Islands
8. French Guyana
9. Guadeloupe
10. St. Martin – St. Barth
11. Martinique
12. Puerto Rico
13. US Virgin Islands

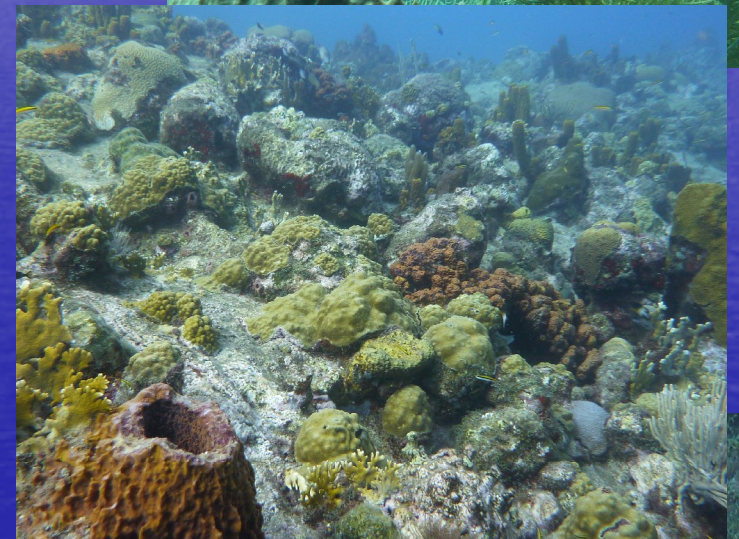






## An outstanding coastal and marine biodiversity ...

- 26.000km coral reefs (7% of the world total)
- 2<sup>nd</sup> and 3<sup>rd</sup> largest barrier reef in the world (Belize and S. Andres Archipelago)
- 30 species of marine mammals
- 6 of the 7 species of marine turtles
- ~600 species of reef fishes







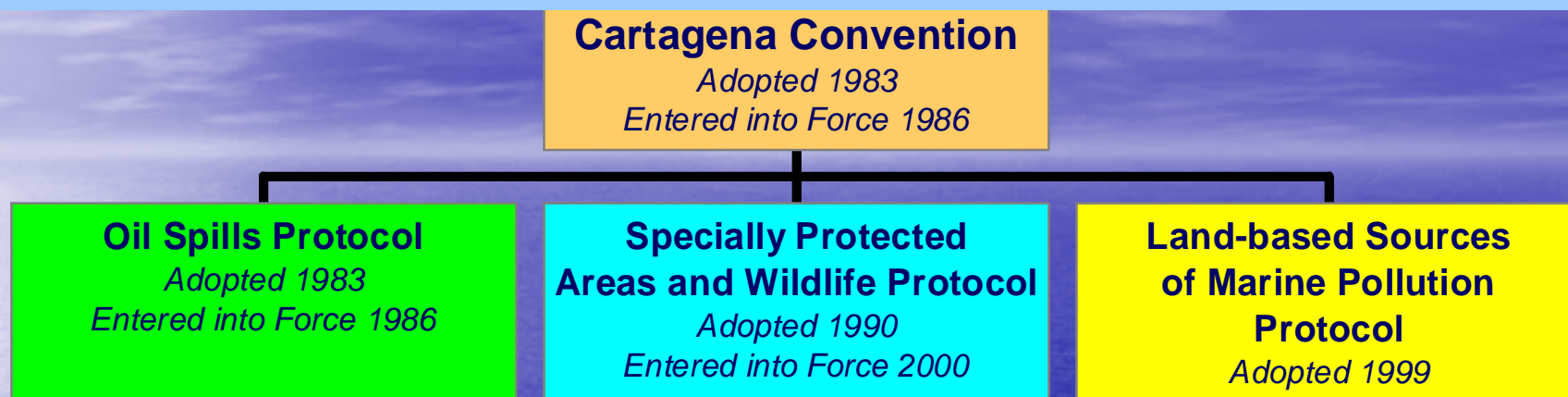
...Upon which the economy relies

- Fisheries: major sector for many countries and territories (US\$ 390M/year)
- Dive Tourism:
  - 60% of the world's divers
  - Income = US \$2 billion/year
- Net profits from coral reefs :
  - US \$663M/year: tourism and recreational activities
  - Up to US \$2.2 B/yr: shoreline protection

... But we have failed in delivering this message effectively ...!!



# The Cartagena Convention & Protocols



## The Caribbean Environment Programme







## *Major ongoing UNEP CEP projects related to coral reefs:*

- Assessment of land-based marine pollution (May 2010)
- UNEP/UNDP Integrated watershed and coastal management for SIDS (US \$14 million from GEF, US \$112 million total)
- UNEP reducing pesticide runoff in the Caribbean Sea (3 CA countries, US \$4.3 million from GEF, US \$10 million total)
- Caribbean Revolving Fund for waste water (GEF/IDB)
- UNDP/UNESCO/UNEP Caribbean Large Marine Ecosystem (CLME) (US \$4 million from GEF). Pilot project on reef biodiversity (\$ 1.1 M)
- CaMPAM: 10 year old regional network to strengthen MPAs (~US \$100,000/y)





# The SPAW Protocol and the SPAW-RAC :

## Objectives of SPAW Protocol:

- To protect, preserve and manage sensitive areas
- To protect and preserve threatened and endangered species of flora and fauna
- To protect species of regional concern to prevent becoming threatened or endangered

13 Contracting Parties: Barbados, Belize, Colombia, Cuba, Dominican Republic, France, Netherlands, Panama, Saint Lucia, St Vincent and the Grenadines, Trinidad and Tobago, USA, Venezuela





# The SPAW Protocol and the SPAW-RAC : *Structure of the SPAW Protocol*

## General Articles

General obligations, Mutual assistance, Public awareness, Committees

## Protected Areas

Establishment and listing, Protection measures, Planning and management

## Other

Common guidelines and criteria, Exemptions, Environmental impact assessment

## Protected Species

National measures, Cooperative measures, Alien species

## *Annexes*

*Ann. I : Protected flora*  
*Ann. II : Protected fauna*  
*Ann. III : Fauna&flora regulated use*







## The SPAW Protocol and the SPAW-RAC : *Missions of the SPAW-RAC*

- Mission of the Regional Activity Centres : help UNEP/CEP and the Parties implement protocols and workplans by collecting and sharing information, supporting and coordinating projects, providing technical assistance, organizing working groups, etc
- Framework: workplans adopted every two years by SPAW Conference of the Parties
- The SPAW-RAC is hosted by the National Park of Guadeloupe





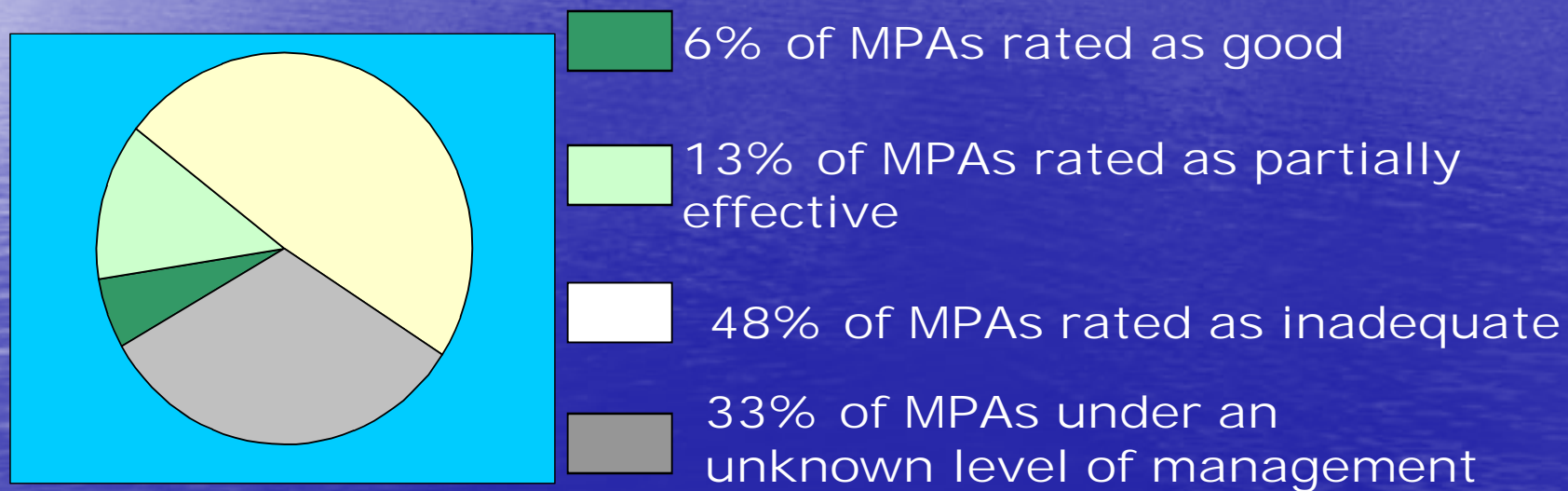
## The SPAW Protocol and the SPAW-RAC : *Implementation since 1990*

- For protected areas:
  - Regional guidelines for identification, selection, establishment and management of PA
  - Active MPA network of managers (CaMPAM)
  - MPA Training of Trainers programme
  - MPA Small Grants Fund for technical assistance and best practices
- For ecosystem management:
  - Coral reef monitoring and capacity building
  - Best practices in sustainable tourism (regional and local)
  - Education and awareness
  - Integrated management of reefs ( better practices for fisheries, marine tourism activities, pollution control)



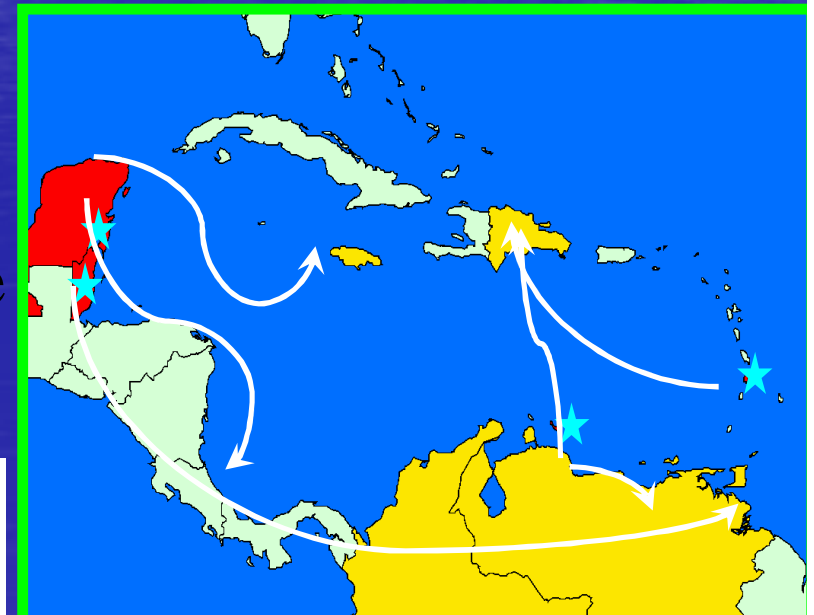


# Management effectiveness of 285 Caribbean MPAs (WRI, 2004)



# CaMPAM Network of MPAs Managers

- List-serv open to all MPA practitioners in the WCR (over 300 members)
- Small Grants Fund to address MPAs needs
- Support exchanges (sharing among managers fishers etc to solve common problems)
- Training of Trainers Programme
- Regional MPA database (online)
- Small grants to support alternative livelihoods around MPAs







## The SPAW Protocol and the SPAW-RAC : *Implementation since 1990*

- For SPAW species:
  - Regional management plans (eg. Manatees, Marine Mammal Action Plan)
  - National management and/or recovery plans (eg. for sea turtles with WIDECAST)
  - Public awareness and education activities (materials, campaigns, support to NGOs etc.)
- Institutional level:
  - Scientific and Technical Advisory Committee (meets on a yearly basis)s
  - Memorandum of Cooperation with CBD, Ramsar, CMS and Interamerican Convention on Sea Turtles

*CEP, SPAW and the RAC provide an appropriate framework  
for regional cooperation and action for coral reef  
conservation*





# Tourism and coral reefs in the Caribbean

Some questions (open list) :

- How can we raise awareness among decision-makers and stakeholders to ensure coral reefs are properly valued and taken into account in spatial planning and development decisions?
  - Which tools?
  - Which targets?
  - Which messages and references?
- How can we reconcile on the ground reef-related tourism and activities with coral reef conservation on the long-term?
  - Code of conducts and education?
  - Limited number of operators and/or divers quotas per day/week/month?
  - Restricted zones?





# Thank you for your attention!

Alessandra Vanzella-Khoury, UNEP-CEP  
Cartagena Convention and SPAW Protocol Secretariat  
Kingston, JAMAICA  
[avk@cep.unep.org](mailto:avk@cep.unep.org)  
Tel 876-9229267\Fax 876-9229292

Helene Souan, Director SPAW/RAC  
Parc national de Guadeloupe, Habitation Beausoleil, Montéran, BP 93,  
97120 Saint-Claude Guadeloupe (FWI)  
[Helene.souan.carspaw@guadeloupe-parcnational.fr](mailto:Helene.souan.carspaw@guadeloupe-parcnational.fr)



Tél: 00 1 90 80 14 99  
Mob: 00 1 90 19 15 65

