



Australian Government
Great Barrier Reef
Marine Park Authority

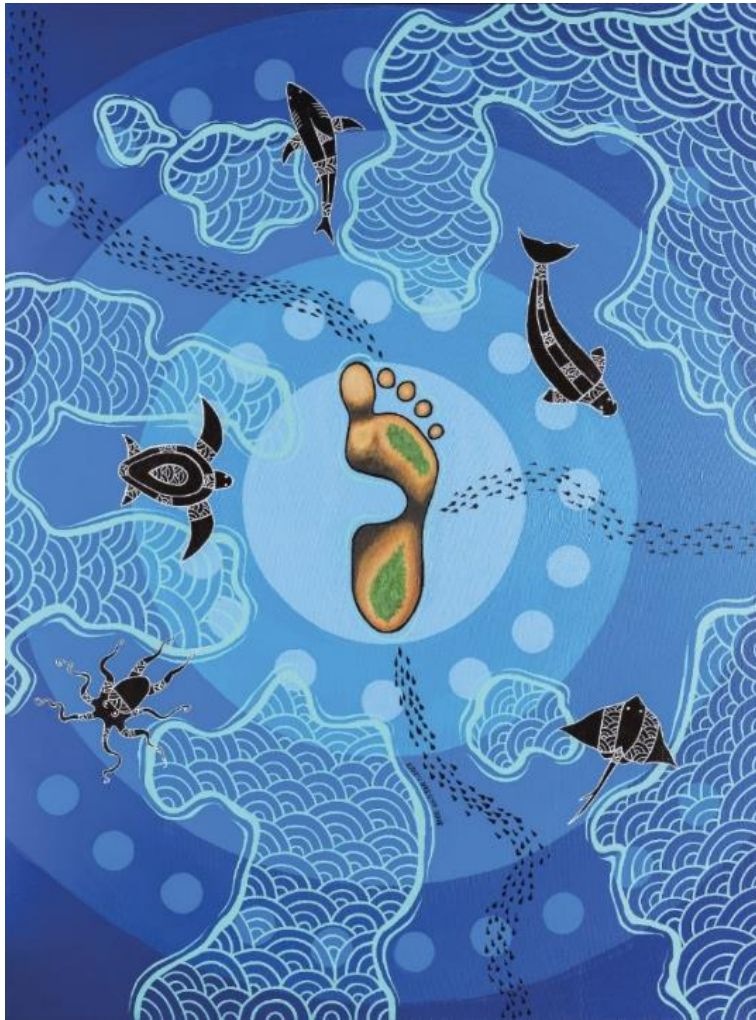


Queensland
Government



Ad hoc Committee on Resilience-based Management

Presented by: Teresa Sadkowsky, International Manager
Date: 3 Feb 2021



'Step of Change' by Nicky Bidju Pryor commissioned as part of the Great Barrier Reef Marine Park Authority's Reconciliation Action Plan.

We acknowledge the continuing sea country management and custodianship of the Great Barrier Reef by Aboriginal and Torres Strait Islander Traditional Owners, whose rich cultures, heritage values, enduring connections and shared efforts protect the Reef for future generations.

Background

- Outcome of the 'Managing for Resilience' Workshop in Townsville, Dec 2019
- ToR adopted following the workshop during the 34th ICRI GM
- Purpose is to: *identify supports and develop best-practice guidance on actions that will enable members to tailor and scale up RBM to meet local, national and global needs.*
- Relevant to ICRI Plan of Action 1.C

Members



Chair: Katherine Martin, GBRMPA

- Coral Cay Conservation – Thomas Dallison
- Coral Reef Alliance – Madhavi Colton
- CTI-CFF - Dr. Mohd Kushairi Bin Mohd Rajuddin
- DFAT, Australia – Amanda Brigdale
- Great Barrier Reef Foundation - Amy Armstrong, Sarah Castine
- ICRI Secretariat – Francis Staub, Claire Rumsey
- ICRS - Morgan Pratchett
- NOAA– Jennifer Koss, Jason Philibotte
- Reef World Foundation - Chloe Harvey
- The Nature Conservancy - Elizabeth McLeod
- UN Environment - Gabriel Grimsditch

Overall objective:

- Identify supports and develop best-practice guidance on the actions that will enable members to tailor and scale up Resilience-Based Management to meet local, national and global needs.
-
1. **Targeted Communications:** Identify global, national and local RBM communication needs, priorities and key messages. Co-develop RBM communication strategies that can be scaled and tailored to meet these needs. Share best-practice examples of RBM outcomes.
 2. **Overcoming Challenges:** Identify key challenges to RBM implementation and share case studies on how these could be addressed at global, national and local scales.
 3. **Building Opportunities:** Assess the priority opportunities for RBM implementation and support member engagement and participation.
 4. **Building Capacity:** Identify opportunities for partnership between members, NGOs, industry and community organisations who can build understanding and enable members to scale up and tailor RBM.

OUTPUTS



Restoration Hub

Restoration Hub has been designed to be a centre point for all information, whether

- the latest guidelines, new and existing initiatives, recent news and events related to restoration of coral reefs and their related ecosystems (mangroves and seagrass).

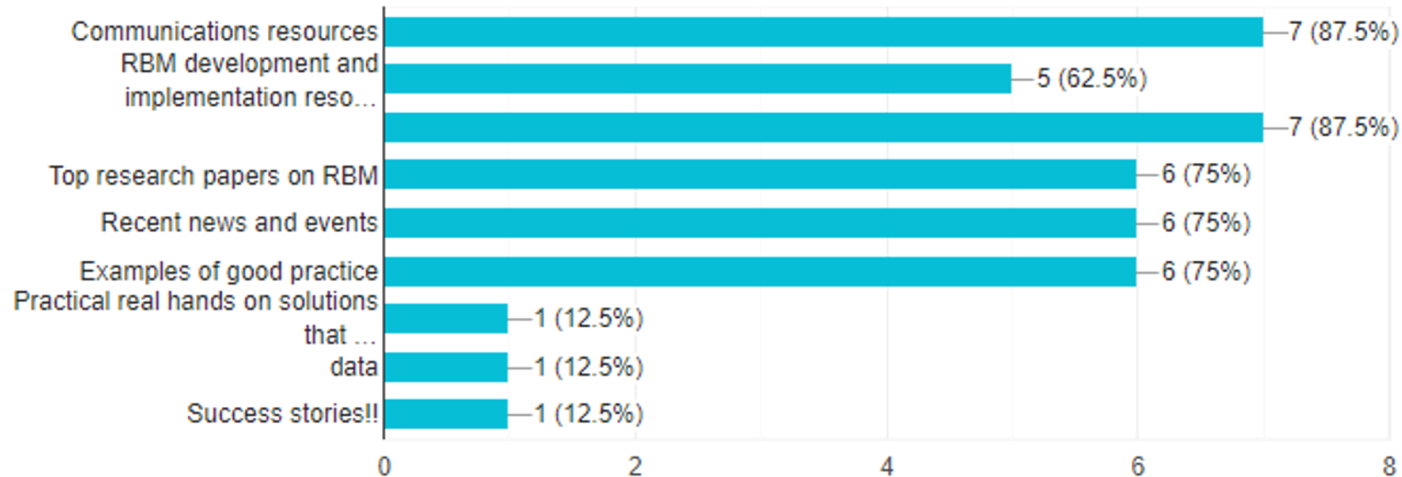
www.gbmpa.gov.au



RBM Communications

What would you like to see on the 'Resilience Hub' on the ICRI website? (Can select more than one)

8 responses



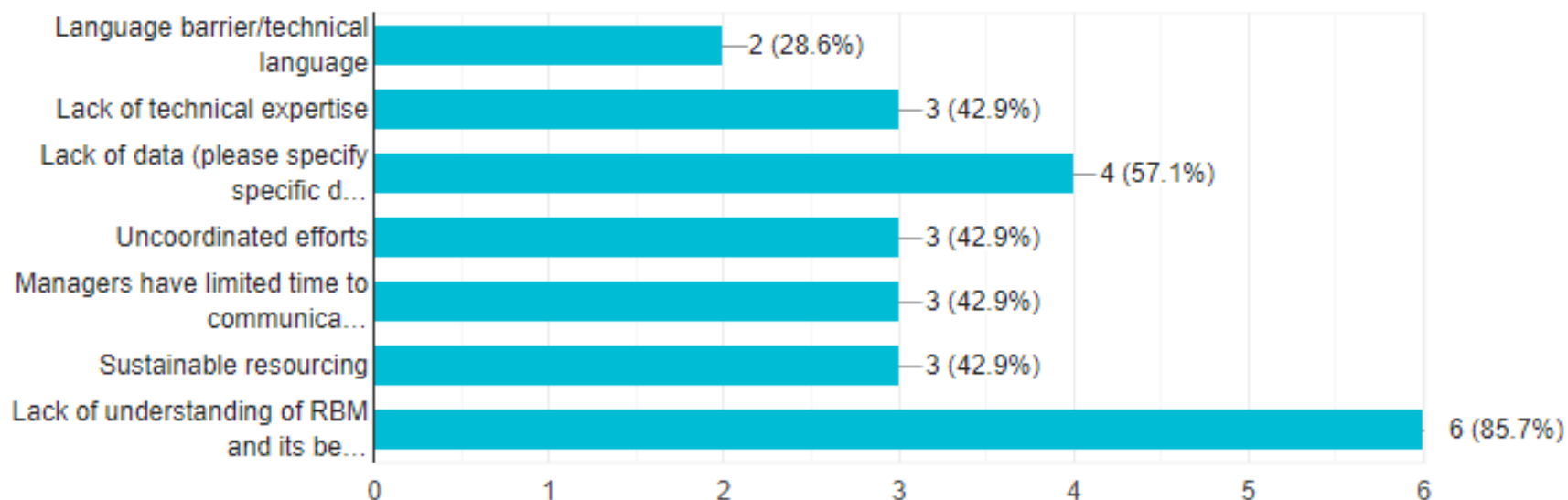
OTHER OUTPUTS

- Policy brief
- Short videos/infographic on RBM key messages and implementation
- Webinar or 'Ask the Expert' sessions

What are some key challenges in implementing RBM in your region/country? (Can select more than one)



7 responses



Update to the Terms of Reference

- Extension of Term to report at 36th ICRI GM.
- Working with ICRI members, reef-bearing nations and relevant partners, the Committee will:
 - Identify global national and local RBM communication needs, priorities and key messages. ~~Co-develop~~ Share RBM communication strategies that can be scaled and tailored to meet these needs. Share best-practice examples of RBM outcomes.
 - Identify key challenges to RBM implementation and share case studies on how these could be addressed at the global, national and local scales.
 - ~~Assess~~ Identify the priority opportunities for RBM implementation and support member engagement and participation.
 - Identify opportunities for partnership between members, NGOs, industry and community organisations who can build understanding and enable members to scale up and tailor RBM.

Survey

- Deadline – Friday 19 Feb

Section 1 of 7

Ad hoc Committee on Resilience-based Management



At the 34th ICRI General Meeting in Townsville, Australia, ICRI members voted to adopt the Terms of Reference for the ad hoc Committee on Resilience-based Management. The objectives for the Committee were developed during the Workshop held during the 34th ICRI General Meeting in Townsville, Australia.

The Committee's overarching purpose is to:

Identify supports and develop best-practice guidance on the actions that will enable members to tailor and scale up Resilience-Based Management to meet local, national and global needs.

Email address *

Valid email address



Australian Government

Great Barrier Reef
Marine Park Authority



Queensland
Government



Traditional artwork by Patricia Gavin.