
Coral reefs and the and the CBD Post-2020 Global Biodiversity Framework

Opening remarks from Margaret Johnson
Great Barrier Reef Marine Park Authority, Australia
ICRI Co-chair



Image credit: Coral Reef Image Bank

Images: coral reef image bank

Coral reefs and the and the CBD Post-2020 Global Biodiversity Framework

Emily Corcoran,
Consultant to ICRI



Image credit: Coral Reef Image Bank

Welcome to the meeting.

The Purpose of this meeting is to discuss the work ICRI has been undertaking with respect to the Post-2020 GBF, the Recommendation adopted by ICRI members in May 2020 and how to ensure these Recommendations are now realized within the CBD Global Biodiversity framework

Participants to this call includes a mix of ICRI focal points, CBD focal points, representatives of key NGOs supporting the Post-2020 process and it is great to see this diversity as the intention is to inform the negotiations of all Parties - not just those currently within ICRI, or just those with coral reefs.

I would like to recognise the financial and technical contribution of Vulcan to this work.

Content: I will provide some context, introduce the Recommendation and where it fits in terms of the Global Biodiversity Framework, Before discussing what it is that countries can do to take forwards this forward in the coming negotiation phase of the Post 2020 process.

The presentation was made during 2 1 hour virtual dialogue sessions hosted by ICRI with the aim to trigger discussion. This version of the presentation has been adapted for sharing, however if you would like to get in touch to discuss any aspects of the presentation then please do so via fstaub@icriforum.org or emily.e.corcoran@gmail.com

Coral reef video

Produced for ICRI by Vulcan Inc., 2020

Accessed at
<https://www.youtube.com/watch?v=aHUEdgdwxj8>

I would like to start by setting the scene with this one minute film....
[embedded film removed to reduce file size: access it via www.coralpost2020.org or
<https://www.youtube.com/watch?v=aHUEdgdwxj8>]



International Coral Reef Initiative

A global partnership for the preservation of the world's coral reefs and associated ecosystems.

What We Do

fstaub@icriforum.org
www.icriforum.org

2: The International Coral Reef Initiative – is a global partnership between nations and organisations that strives to preserve the world's coral reefs and related ecosystems. One role the ICRI Partnership is to develop coordination and consensus building in relevant policy areas. Countries that are members to ICRI are custodians of 75% of the world's coral reefs and almost all are Parties to the CBD.

The ICRI Secretariat is hosted for a determined period (normally 2 years) – currently co-hosted by the governments of Australia, Indonesia and Monaco. To find out more about ICRI, or membership you are very welcome to visit the website or contact Francis.

Post 2020
documentsWorking Group
2020Regional
consultationsOther
Consultations

Peer Review

Submissions

Co Chairs'
UpdatesGender-responsive
processAction
Agenda

Media

CBD // CONFERENCES // POST2020



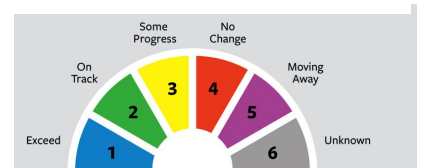
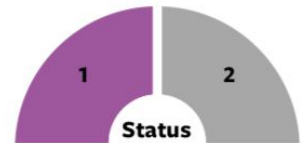
The Post-2020 Global Biodiversity Framework

Many of you are very familiar with the [Post-2020 process](#), with its ambition to agree a new and transformative framework that looks to change how we do things and shift our relationship with nature. I will build on previous experience, including what has been learned from the Aichi targets, recognising things need to be done differently if we are to achieve the vision of living in harmony with nature by 2050.

GLOBAL BIODIVERSITY OUTLOOK 5



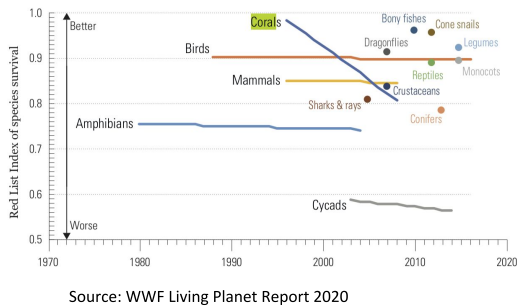
By 2015, the multiple anthropogenic pressures on coral reefs (1), and other vulnerable ecosystems (2) impacted by climate change or ocean acidification are minimized, so as to maintain their integrity and functioning.



The needs to do things differently was urgently re-enforced by

The recent publication of GBO5 - especially so for coral reefs. Whilst NONE of the Aichi Targets have been met - AT 10 had perhaps the worst results. It is notable that AT10 also really struggled with a lack of available and meaningful indicators - only one dimension of this target could be assessed. Strengthening our ability to detect change will help increase accountability and communication of any future targets and goals.

GLOBAL BIODIVERSITY OUTLOOK 5



...The target was missed by the stated date of 2015 and has not been achieved by 2020 (High Confidence)

.....corals are showing the most rapid increase in extinction risk of all assessed groups

.....hard corals are declining significantly in some regions

As highlighted both in GBO 5 and the WWF Living planet report, corals are showing the most rapid increase in extinction risk of all assessed groups. – with hard coral cover declining in many regions, and key pressures continuing to increase.

THE VALUE OF CORAL REEFS

Taking action to prioritise coral reefs can deliver benefits of \$2.7 trillion USD, contributing to the safety, nutrition, economic security, health and wellbeing of millions of people

**1
BILLION**

More than one billion people benefit directly from coral reef resources for food and as a source of income through activities related to fishing and tourism

**60,000
YEARS**

The time that the Great Barrier Reef has been a part of the culture of Aboriginal and Torres Strait Islander people

1/4

Coral reefs support 25% of marine life

**\$36
BILLION**

Coral reef tourism contributes \$36 billion to global tourism industry annually

97%

A healthy reef can reduce coastal wave energy by up to 97%

**\$9
BILLION**

Healthy coral reef ecosystems reduce shoreline erosion and protect coastal housing, agricultural land and beaches with a global net benefit of 9 billion USD/year

300-400x

The prospect of finding a new drug in the sea, especially among coral reef species, may be 300 to 400 times more likely than isolating one from a terrestrial ecosystem

ICRI
INTERNATIONAL
CORAL REEF INITIATIVE

PRODUCED BY VULCAN INC. 2020


ICRI's response

In 2018, a rapid assessment on AT10 was undertaken - to understand experiences of coral reef countries in implementing this target. As a result of this In December 2018, Recognizing the value of the world's coral reefs and the continuing need to safeguard them, ICRI agreed it was critical to engage with the Post-2020 process and contribute to the development of the GBF. An ad hoc committee was established to coordinate this work.

This group was very well supported by at least 20 ICRI members - approximately half countries, half organisation. They have 3 Terms of Reference:

1. To contribute to the CBD post-2020 process and engage for ICRI and to support ICRI members in highlighting coral reefs and associated ecosystems through their own engagement in consultations
2. To draft a Recommendation for how coral reefs could be prioritised
3. To communicate the Recommendation.. For this phase a sub group has been formed in the ad hoc committee to capitalise on the communications expertise of a number of ICRI member organisations, including Vulcan, WCS, WWF, UNEP, Reef World Foundation and the ICRI Secretariat.

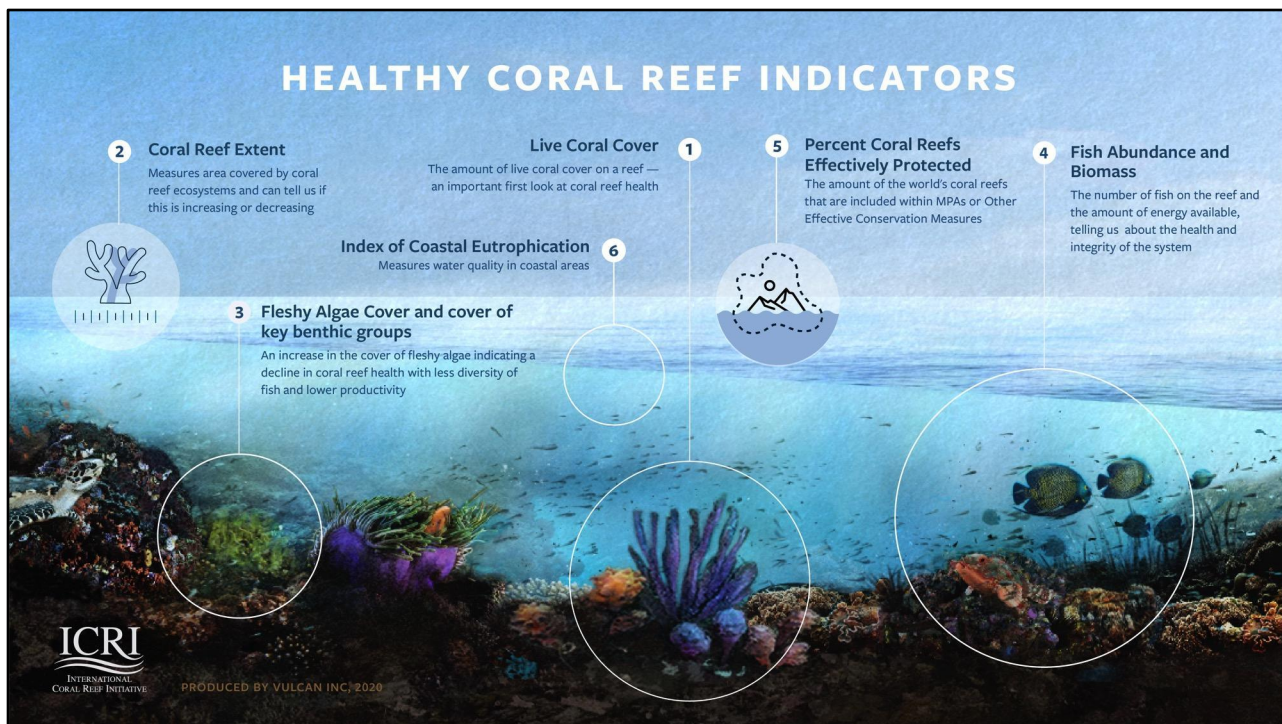
May 2020: ICRI Adopts Recommendation for Coral Reefs in the Post-2020 Framework



A world map illustrating the global distribution of ICRI Member Countries. The member countries are highlighted in blue, while non-member countries are shown in light gray. The map includes labels for major countries and regions, such as Canada, United States, Mexico, Central American countries (Guatemala, El Salvador, Honduras, Nicaragua, Costa Rica, Panama), Caribbean countries (Cuba, Haiti, Dominican Republic, Jamaica, Barbados, Trinidad and Tobago, Suriname, Guyana, French Guiana), South American countries (Venezuela, Colombia, Ecuador, Peru, Bolivia, Brazil, Chile, Argentina, Uruguay), Greenland, European countries (Iceland, United Kingdom, Ireland, Portugal, Spain, France, Germany, Poland, Czech Republic, Slovakia, Hungary, Austria, Switzerland, Italy, Greece, Turkey, Bulgaria, Romania, Serbia, Croatia, Slovenia, Finland, Sweden, Norway, Denmark, Netherlands, Belgium, Luxembourg, Germany, France, Spain, Portugal, Ireland, United Kingdom, Iceland, Greenland), African countries (Algeria, Libya, Tunisia, Egypt, Sudan, Chad, Niger, Mali, Mauritania, Morocco, Algeria, Libya, Tunisia, Egypt, Sudan, Chad, Niger, Mali, Mauritania, Morocco, Algeria, Libya, Tunisia, Egypt, Sudan, Chad, Niger, Mali, Mauritania, Morocco), Asian countries (Russia, Kazakhstan, Mongolia, China, India, Pakistan, Bangladesh, Nepal, Bhutan, Myanmar, Laos, Cambodia, Vietnam, Philippines, Malaysia, Brunei, Indonesia, Timor-Leste, Australia, New Zealand), and others like Greenland, Iceland, and New Zealand.

■ ICRI Member Countries

Much of the preparatory work was submitted to the Post-2020 process in response to the various consultation opportunities since late 2018 and can be accessed via the ICRI ad hoc committee web page [here](#).



There are three main elements to the Recommendation

1. calling for prominent recognition of coral reef ecosystems within the text of the CBD Post-2020 Global Biodiversity Framework (GBF) with Goals and targets at an **ecosystem scale** with focus on enhancing integrity and resilience to support human society into the future;
2. The Goals and Targets have timescales appropriate for achieving the stabilisation and recovery of coral reef ecosystems, recognising the lag time between action and effect of that action;
3. Calls for the inclusion of a set of available, measurable and meaningful coral reef indicators that are foundational in determining progress against goals and targets.

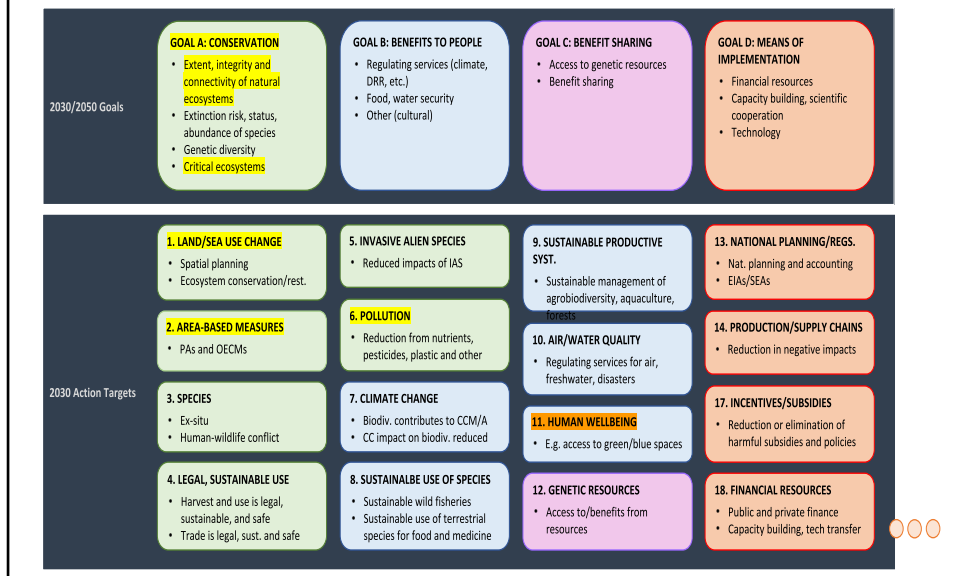
The 6 indicators

The six indicators recommended for use in the GBF monitoring framework are shown on the slide. These are already in use and can greatly improve what we know about the health and function of the reef. The Recommendation also highlights 5 emerging indicators – that are in various stages of development, but could really help us understand more about how intact reefs are and how resilient we can expect them to be.

It is the expectation that the realisation of these 3 elements will increase VISIBILITY/ FOCUS/ PRIORITISATION coral reefs as a special ecosystem at a critical juncture; INCREASE CAPACITY to assess coral reefs globally and INCREASE accessibility and coherence of information and knowledge;

Current draft goals and targets

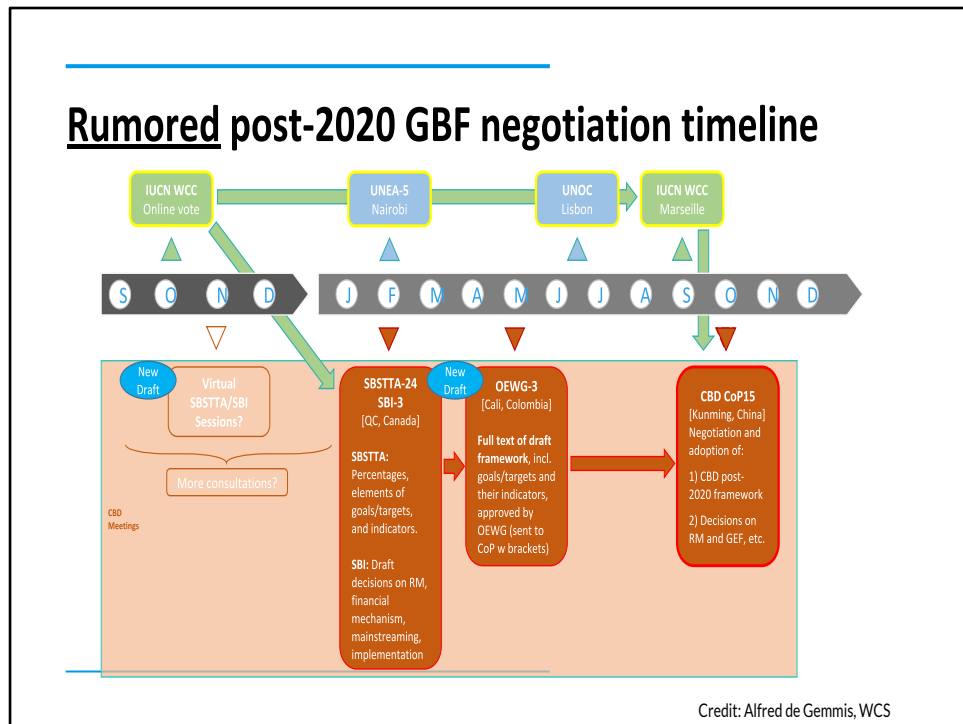
Credit: Alfred de Gemmis, WCS



THANKS TO WCS for allowing me to borrow this slide which shows the current goals and targets and helps me to identify where these recommended indicators fit.

The healthy coral reef indicators respond principally to

- Goal A: Coral reef extent and live coral cover work together to provide information on changes in extent of coral reef ecosystems. In addition, bringing in cover of fleshy algae and other benthic organisms + fish abundance and biomass can start to provide information on ecosystem function and integrity, information also relevant to
- Target 1: particularly target 1.2 - looking at fragmentation of natural areas
- Target 2: where tracking the % of coral reef protected is a very achievable metric and can show ecological representativity
- Target 6: Water quality is critical for coral reefs - The index of coastal eutrophication is an SDG indicator could provide highly relevant information for coral reef health



But this is an evolving framework and so we keep alert to the fact that as it evolves there may be other opportunities to use coral reef indicators or coral reefs as an exemplar ecosystem.

There are still a number of important steps in this negotiation process - but what has been made clear by the co-chairs is that we are now entering the phase, where it is for Parties to be shaping up the details of the framework and ensuring an outcome for coral reefs.

The current pandemic is causing delay and uncertainty - however it is critical to capitalise on the opportunity that the Post-2020 Framework represents for critical and coherent action for coral reefs

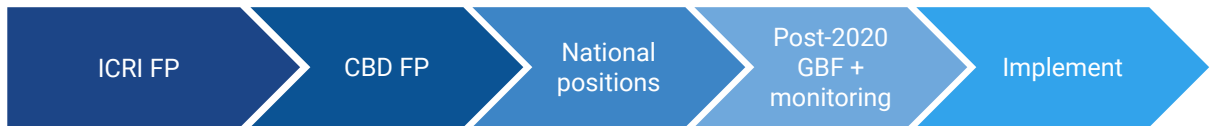
Again - Big thanks to WCS colleagues for loan of this slide and health warning this is a *possible* timeline aiming to show the remaining pathway

How we have used the Recommendation

- To engage consistently with consultations e.g.
 - on the Monitoring Framework helped contribute to the collation of available indicators (UNEP-WCMC/ Biodiversity Indicators Partnership (BIP))
 - providing input to the SBSTTA 24 peer review process (ICRI briefing materials picked up by Mozambique, UK, France, European Commission, Africa Group + organisation submissions (including ICRI))
- To give coral reefs a coherent voice -
 - a focus for social media messaging
 - Coral reefs highlighted in 13 interventions during the Biodiversity Summit - with explicit reference to the recommendation by HSH Prince Albert of Monaco

Since it was adopted the Recommendation has been put to use in a variety of ways

What is the ask?



The next few slides present some thoughts as to how countries could continue take up the recommendation and how we as ICRI can support. (recognising that many countries have already been involved in shaping the Recommendation and have already started to use it)

The challenge is Not straightforward – Multifaceted – multiple actions – multiple scales – multiple actors – but critical and possible!

The first step is ensure close communication between ICRI Focal points and CBD counterparts.

Within negotiations this could mean:

- Ensuring Coral reefs are a top negotiating priority for Post-2020 GBF
- Regional positions mirror national priorities with respect to coral reefs
- Ensure that ecosystem specificity is retained in the monitoring framework
- Engage through ICRI to launch a decade of action to ensure implementation,

Voices of Support



Every Fijian is brought up by the ocean. The first thing they see is the ocean and the reefs around them. In my traditional area, the Great Sea Reef is not only our life, it's a sanctuary for us. My vision for the next 10 years is for people to not have to go far to find fish to have enough food and fish to eat.

Williams Katanivere
MINISTER OF TOURISM, FISHERIES AND MARINE RESOURCES
REPUBLIC OF FIJI

WWW.CORALPOST2020.ORG



Coral reef ecosystems bring about nature's contributions to people including a great deal of blessings. I hope that ICRI will continue to contribute to the conservation of coral reefs under the post-2020 global biodiversity framework.

Terii Toshio

DIRECTOR GENERAL, NATURE CONSERVATION BUREAU
MINISTRY OF THE ENVIRONMENT, JAPAN

WWW.CORALPOST2020.ORG



Coral reefs are widely known to be an essential pillar of our existence, one of the very reasons contributing to the thriving Maldives enjoy internationally. However, an increase in the frequency and the magnitude of climate change associated impacts, such as more bleaching, and ocean acidification, threatens this same system which is also the backbone of our economy. It is crucial to come together to find global solutions to save the interconnected coral reefs, of the Maldives and the world.

Zaha Waheed

MINISTER OF FISHERIES, MARINE RESOURCES AND AGRICULTURE, REPUBLIC OF MALDIVES

WWW.CORALPOST2020.ORG



The Framework will set the priorities for biodiversity to ensure the realization of CBD's vision – that society is living in harmony with nature by 2050. The Framework goals, targets and indicators make it clear how actions to address coral reef decline contribute to this vision.

H.E. Edhy Prabowo
MINISTER OF MARINE AFFAIRS AND FISHERIES
REPUBLIC OF INDONESIA

WWW.CORALPOST2020.ORG



Coral reefs are an invaluable heritage to pass on to future generations. The Government of New Caledonia is fully conscious of its responsibility towards 30% of the planet's remaining pristine reefs, still unaffected by human activity.

Thierry Santa

PRESIDENT OF THE GOVERNMENT OF
NEW CALEDONIA

WWW.CORALPOST2020.ORG



As a country that literally lives and breathes by virtue of our coral reefs, we understand the need to prioritize and safeguard this fragile ecosystem. It is not enough to just have indicators. Unless they're being used as part of the strategy to change and implement policies, it's just paper and coral reefs could dip further into the abyss.

Umich Sengebau

MINISTER OF NATURAL RESOURCES, ENVIRONMENT AND TOURISM, PALAU

WWW.CORALPOST2020.ORG



The Global Biodiversity Outlook 5 confirms that coral reefs have 'shown the most rapid increase in extinction risk of all assessed groups' due to climate change and other human pressures. This underlines the urgency to prioritize coral reefs in the new Post 2020 Global Biodiversity Framework.

Alain de Comarmond

DIRECTOR GENERAL, ENVIRONMENT DEPARTMENT
MINISTRY OF ENVIRONMENT, FOREST AND CLIMATE CHANGE
REPUBLIC OF FRANCE

WWW.CORALPOST2020.ORG



We need to focus on coral reef conservation and management for the sustenance of agriculture, fisheries and tourism industries in the Maldives. Our solutions and Our future depend on coral reefs.

Abdulla Naseer, PhD

MINISTER OF STATE FOR ENVIRONMENT
REPUBLIC OF MALDIVES

WWW.CORALPOST2020.ORG



We lose coral reefs at 2°C global warming. Without coral reefs, how can we have a healthy Ocean? Without a healthy Ocean, how can we have a healthy planetary ecosystem? Greenhouse gases are our common enemy.

Peter Thomson

UNEP'S SPECIAL ADVISOR FOR THE OCEAN

WWW.CORALPOST2020.ORG



#ForCoral

One way to support is to talk about the Recommendation - we have an increasing number of voices showing their leadership in supporting the recommendation - some of whom you can see here. These voices and others in the pipeline are forming the basis of our social media outreach.

see also <https://www.icriforum.org/post-2020-voices-of-support/>

We invite you to add your voice.

What support can ICRI Provide?

Negotiation Phase

- Technical / policy support (e.g. briefing notes, preparing for consultations with a coral reef lens)
- Producing supporting materials
- Communication assets and media outreach

Implementation Phase

- Mobilisation of resources (e.g. Global Fund for Coral Reefs)
- Tools to support monitoring and assessment (GCRMN; 2020 status report; Allen Coral Atlas, WDPA, MERMAID)
- Long term engagement by key NGOs

ICRI can provide a range of support to help countries taking up the recommendations made by ICRI and we look forward to the opportunity to discuss what this might look like in more detail.

English
Search...

HOME
ABOUT US
MEDIA
GET INVOLVED
CONTACT US





NEW CALEDONIA
HUBS
REGISTER

10th Pacific Islands Conference
**NATURE CONSERVATION
AND PROTECTED AREAS**
Nature conservation action for a resilient Pacific
Virtual Event
24-27 NOVEMBER 2020







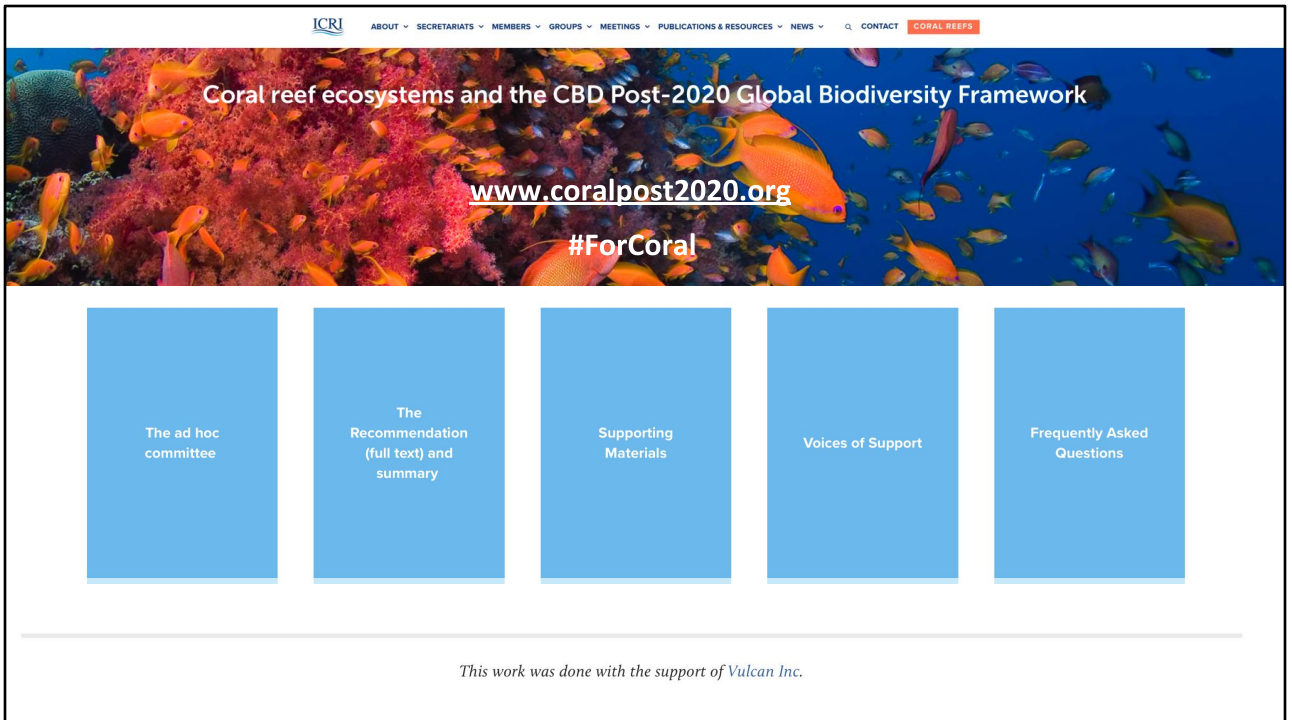
<https://www.pacificnatureconference.com/registration>

One suggestion that came forward In the first virtual dialogue last month, is that we look for opportunities to present the Recommendation at side events and webinars.

We have registered to hold a side event at SBSTTA 24 - when that happens. In the mean we would like to draw your attention to a side event being delivered by Vulcan and ICRI on the 27 November 2020, during the 10th Pacific Islands Conference. This will a great opportunity to continue the dialogue focusing on Pacific priorities for the Post-2020 GBF. This side event aims to:

- Increase awareness of the ICRI Recommendation and the elements for prioritising coral reefs in the Post-2020 GBF to ensure coral reefs persist and are resilient.
- Encourage the uptake of the ICRI Recommendation by Pacific Island states in their national/ regional strategy for the Post-2020 GBF
- Understand how ICRI can focus its support to help Parties to CBD realise the prioritisation of coral reefs in the Post-2020 GBF

In addition to the side event, will have a virtual booth to showcase the Recommendation and voices of support. - so encourage you to register and take a look. In the run up to the conference we will focus our social media activity on the Pacific region, with more messages of support and demonstrations of leadership from the region. Make sure you follow us on twitter @ICRI_CoralReef and use our hashtag #ForCoral



Many resources are already available

- communication outputs - infographics, social media strategy, video clip, FAQ,
- all technical contributions - the Recommendation + all submissions to the CBD process
- provided in multiple languages - thanks to translation support from ICRU members

Please visit www.coralpost2020.org

Proposed next steps

- 01 Be a voice for coral reefs in the Post-2020 GBF
- 02 Join us for our Side Event at the Pacific Islands Conference 27 Nov
- 03 Identify events, opportunities where we can share the Recommendation
- 04 Let us know how we can support you

We will need to continue to work within a high degree of uncertainty as we move forwards. We hope that this presentation will help join some dots and we stand ready to support you to ensure that we do not let this opportunity slip by.

We look forward to keeping in touch. and thank you.

Contact: fstaub@icriforum.org

www.coralpost2020.org

 [@ICRI_CoralReef](https://twitter.com/ICRI_CoralReef) | [#ForCoral](https://twitter.com/hashtag/ForCoral)

Discussion questions.....

Have you used the ICRI Recommendation? how?

What is it that we can do to support you?

What would be useful? (assets, translation, analysis?)