



Coral Reef  
Rescue Initiative

**Resilient Reefs,  
Resilient Communities.**

## **WWF Coral Reef Rescue Initiative – Innovative Partnerships in promoting Coral Reef conservation**

**Carol Phua**  
WWF Global Coral Reef Initiative Leader  
[cphua@wwf.org.au](mailto:cphua@wwf.org.au)

**September 2023**





SWIO - Tanzania



Great Sea Reef - Fiji



Indonesia



Solomon Islands



Palawan, The Philippines



Madagascar

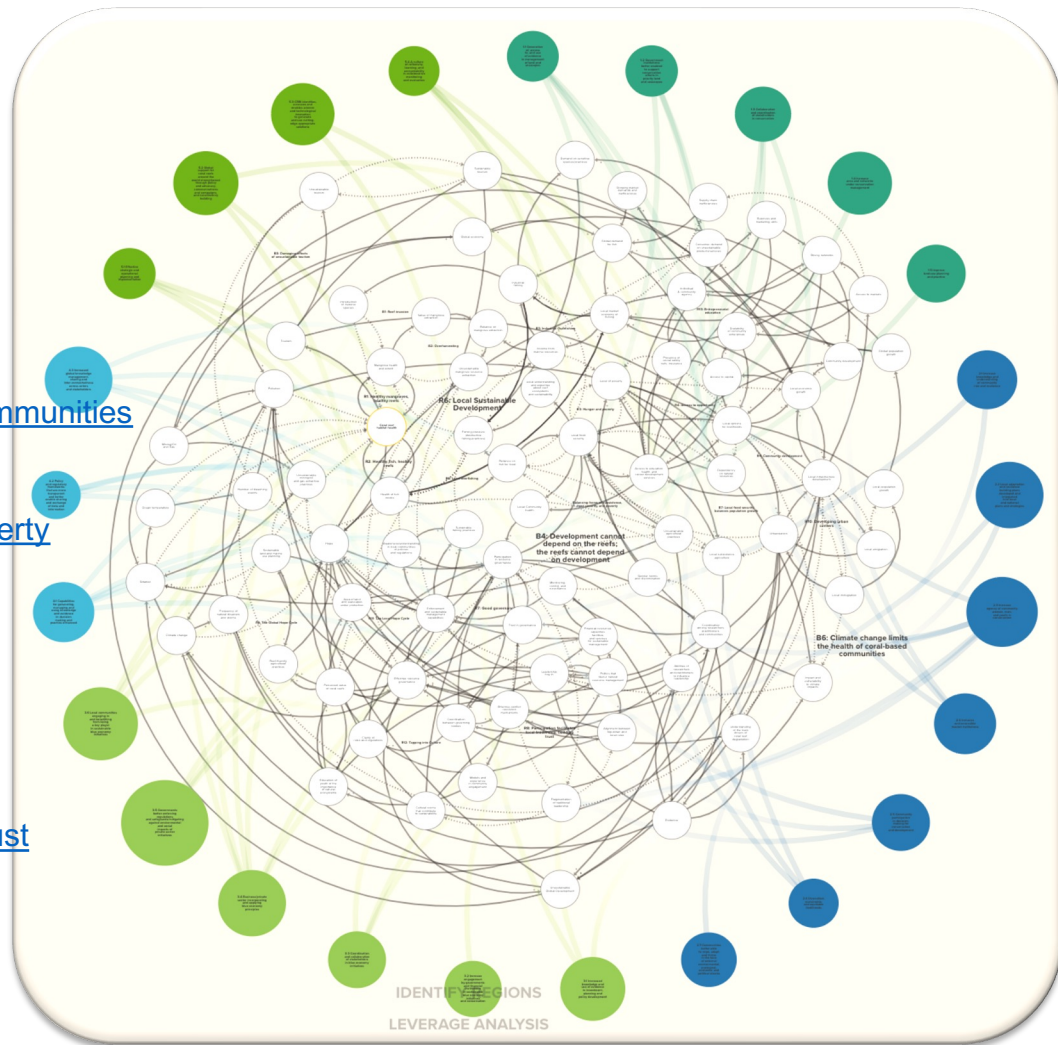


# Systems Map

Coral Reef  
Rescue Initiative

## Loops

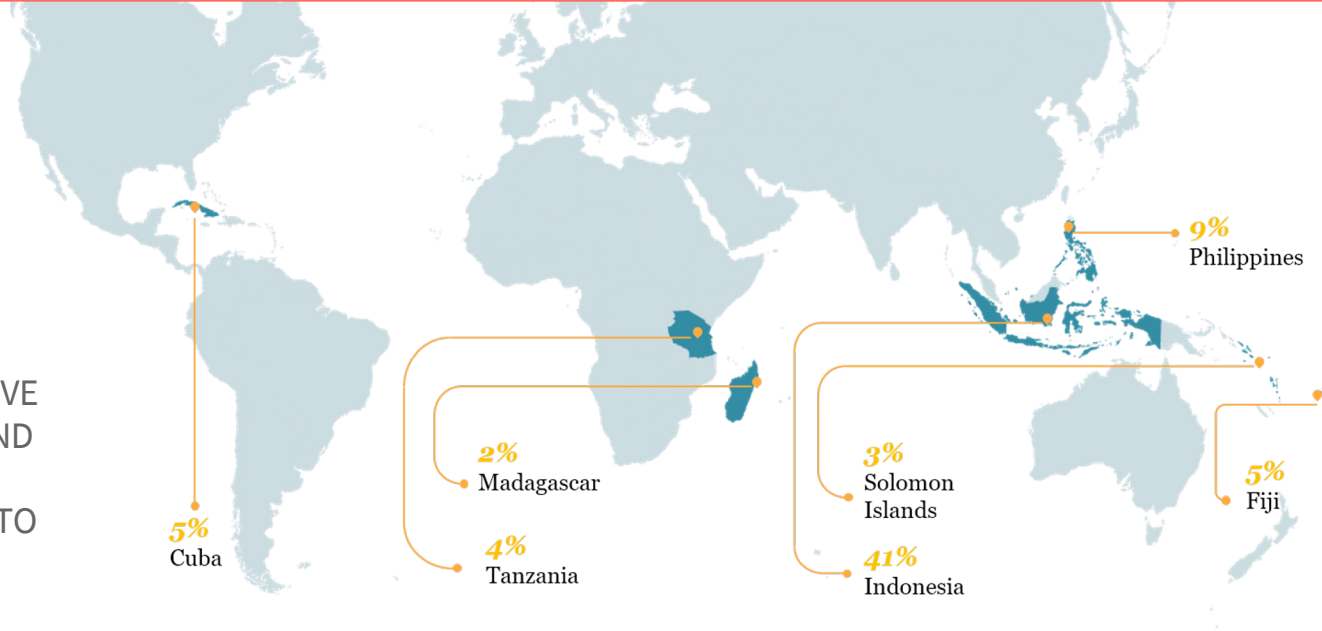
- [B1: Reef invasion](#)
- [B2: Overharvesting](#)
- [B3: Industrial Overfishing](#)
- [B4: Development cannot depend on the reefs; the reefs cannot depend on development](#)
- [B5: Local overfishing](#)
- [B6: Climate change limits the health of coral-based communities](#)
- [B7: Local food security balances population growth](#)
- [B8: Damaging effects of unsustainable tourism](#)
- [Balancing forms of subsistence, food security, and poverty](#)
- [R1: Healthy mangroves, healthy reefs](#)
- [R2: Healthy fish, healthy reefs](#)
- [R3: Hunger and poverty](#)
- [R4: Access to opportunity](#)
- [R5: Community development](#)
- [R6: Local Sustainable Development](#)
- [R7: Good governance](#)
- [R8: Participation facilitates local leadership, building trust](#)
- [R9: The Global Hope Cycle](#)
- [R10: Developing urban centers](#)
- [R11: The Local Hope Cycle](#)
- [R12: Tapping into Culture](#)
- [R13: Entrepreneurial education](#)



# Building a coalition: Coral Reef Rescue Initiative (CRRI)

**Close to 70% of low climate change exposed coral reefs are found in just seven countries – building out from there.**

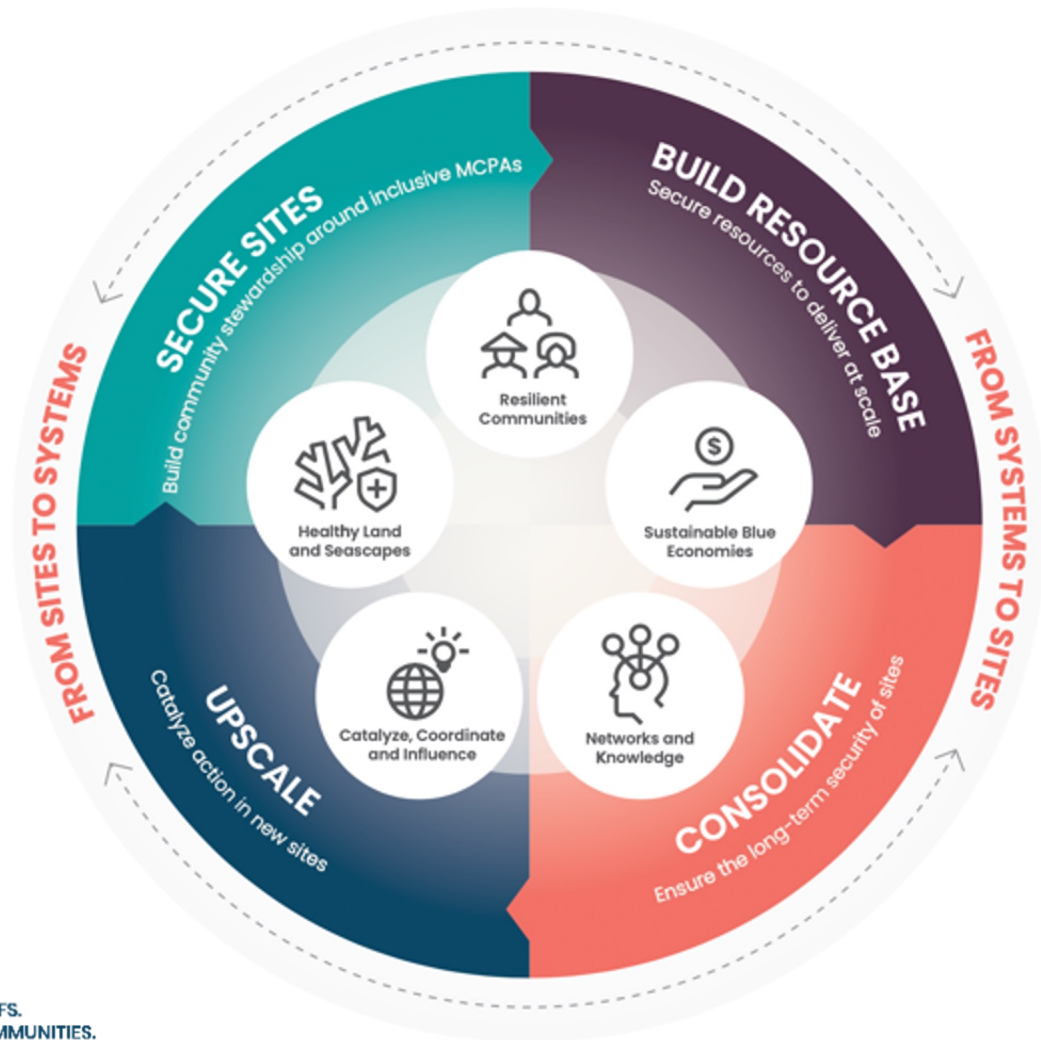
THE CORAL REEF RESCUE INITIATIVE INVOLVES A UNIQUE NATIONAL AND NGO PARTNERSHIP AIMED AT TARGETING THE LEAST EXPOSED TO CLIMATE CHANGE CORAL REEFS



## CRRI GLOBAL Partners







RESILIENT REEFS.  
RESILIENT COMMUNITIES.

## Healthy Land-and Seascapes

We will ensure that climate-resilient and connected coral reefs are managed effectively and inclusively, bringing various stakeholders together to deliver multiple benefits.



## Resilient Communities

We work with communities through diversified skills and livelihood opportunities, so they are better equipped to withstand environmental shocks and stresses.



## Catalysing Global Action and Innovation

Ensuring long-term and lasting impact calls for high-level coordination and an integrated approach.



## Sustainable Blue Economies

A marine-based economy can provide socio-economic benefits, protect marine biodiversity and support global prosperity through sustainable and equitable investments, practices and policies.



## Networks and Knowledge

CRRI is engaging with communities, governments, partners and researchers, promoting access to information and the sharing of knowledge needed for effective action.



RESILIENT REEFS.  
RESILIENT COMMUNITIES.



# GEF7 International Waters Project Objective (4 year programme)

*To strengthen capacity and solutions that ensure the long-term survival of climate refuge coral reef ecosystems, thereby conserving their biodiversity and supporting the blue economies and communities dependent on them.*

**Governments of:**  
**Tanzania, Madagascar,**  
**The Philippines, Indonesia,**  
**Solomon Islands and Fiji.**

## Component 1

Global to local capacity strengthening for climate refuge coral reef monitoring and conservation

## Component 2

Planning for resilient Coral Reef Rescue at the national level

## Component 3

Financial solutions for resilient Coral Reef Rescue

## Component 4

Knowledge Management and Monitoring and Evaluation



## Component 1 Global to local capacity strengthening

## Year 1 Annual Workplan Targets

Outcome 1.1 Government and non-government practitioners, academia and local communities are **connected into networks of knowledge and best practices to identify solutions** for the conservation of climate refuge coral reefs and connected ecosystems.

Outcome 1.2 **Near-real-time monitoring data and information** is obtained at global to national scales to **inform action** by national and regional hubs.

Output 1.1.1  
At least six learning events

Output 1.1.2  
Online learning tools (MOOCs) developed

Output 1.2.1 Global climate refuge coral reef monitoring system prototype & climate data platform

Output 1.2.2. Technical assistance and support for monitoring activities

### YEAR 1 TARGETS

Global Knowledge Unit established (1-2 knowledge holders/experts per country)

MOOC workplan (draft)

Monitoring and reporting needs assessment findings (5 countries)

Needs assessment for ways to strengthen data use for decision making.

Learning needs assessments (5 countries complete)

Training opportunities identified (global)

### RESULTS FRAMEWORK INDICATORS & TARGET

Number of trainees involved in online learning opportunities

Year 1 Target:  
NA

Participant views on the added value of networking and relationships building opportunities offered.

Year 1 Target:  
NA

Number of users and visitations on Climate Data Platform

Year 1 Target:  
NA



# Component 2 Planning for resilient Coral Reef Rescue

## Year 1 Annual Workplan Targets

Outcome 2.1 Increased **coordination and collaboration** amongst stakeholders across sectors for the inclusive conservation and management of climate refuge reefs over the long term.

Outcome 2.2 A **shared vision** and agenda for climate refuge reefs developed through an evidence informed and inclusive planning processes

Output 2.1.1 Six Climate Refuge Coral Reef National Hubs

Output 2.1.2 Community representation in hubs strengthened

Output 2.1.3 TK and community vision integrated into national strategies

Output 2.2.1 Threat/opportunity analysis of drivers of reef health

Output 2.2.2. Cost-benefit analysis of unsustainable fishing

Output 2.2.3. Action plans for climate refuge reef conservation

### YEAR 1 TARGETS

Governance institutional analysis (FJ, SI, ID, TZ)  
Visioning workshops (FJ, SI, ID, TZ)

Gendered capacity & gap assessment (ID, TZ)  
Comm.strengthening training(FJ, SI, ID, TZ)

Consolidated vision for resilient reef (SI, ID, TZ)  
Strategic action plan workshop (SI, FJ, ID)

Threat/opportunity analysis completed (FJ, SI, ID, TZ)

Cost/benefit analysis completed (FJ, SI, ID, TZ)

### RESULTS FRAMEWORK INDICATORS & TARGET

Percent of stakeholders engaged in national hub

Year 1 Target:  
NA

Extent of community vision integrated into National Hub Action Plans

Year 1 Target:  
NA

Percent of national hub members committed to vision and solution in Action Plan

Year 1 Target:  
NA

## Component 3 Financial Solutions for resilient coral reef rescue

## Year 1 Annual Workplan Targets

Outcome 3.1 Investment opportunities identified to increase sustainable financial flows to relevant seascapes and landscapes to reduce threats to resilient coral reefs.

Output 3.1.1 Technical assistance to mobilise investment opportunities for national priorities

Output 3.1.2 Scoping of at least 100 existing and potential sustainable businesses

Output 3.1.3 Technical assistance to national teams to prepare business filtering and support frameworks

Output 3.1.4. Investments portfolio developed in priority reefs in the 6 countries

### YEAR 1 TARGETS

Lessons learned on coral reef friendly investment and business opportunities (Global)

### RESULTS FRAMEWORK INDICATORS & TARGET – YEAR 1

Level of advancement of pipeline of projects established by National Hub Steering committee

Year 1 Target:

Lessons learned completed



## Component 4 Knowledge Management and M&E

## Yr 1 Annual Workplan Targets

Outcome 4.1 Increased **awareness** of governments, donors and resilient local communities, and knowledge (from local to global level) on the value of resilient coral reefs, their main threats, and good practices/actions for their conservation.

Outcome 4.2 Informed and adaptive project management

Output 4.1.1  
Communication and awareness raising strategy

Output 4.1.2  
Knowledge management and communication products

Output 4.1.3  
Participation in IW: LEARN regional meetings & GEF IW Conferences

Output 4.2.1 M&E reports, including project progress reports and evaluations

Output 4.2.2. Annual reflection workshops

### YEAR 1 TARGETS

Project wide communication strategy

National stakeholder awareness assessments (FJ, SI, ID, PH, TZ)

Assessment of existing national capacity, tools and methods to capture narratives

Inception workshop

Approved <sup>AWDB</sup> M&E database

Project Reports

Country reflection meetings  
Global reflection meeting

### RESULTS FRAMEWORK INDICATORS & TARGET – YEAR 1

Percent of National Hub members aware of the value and importance of climate refuge reefs

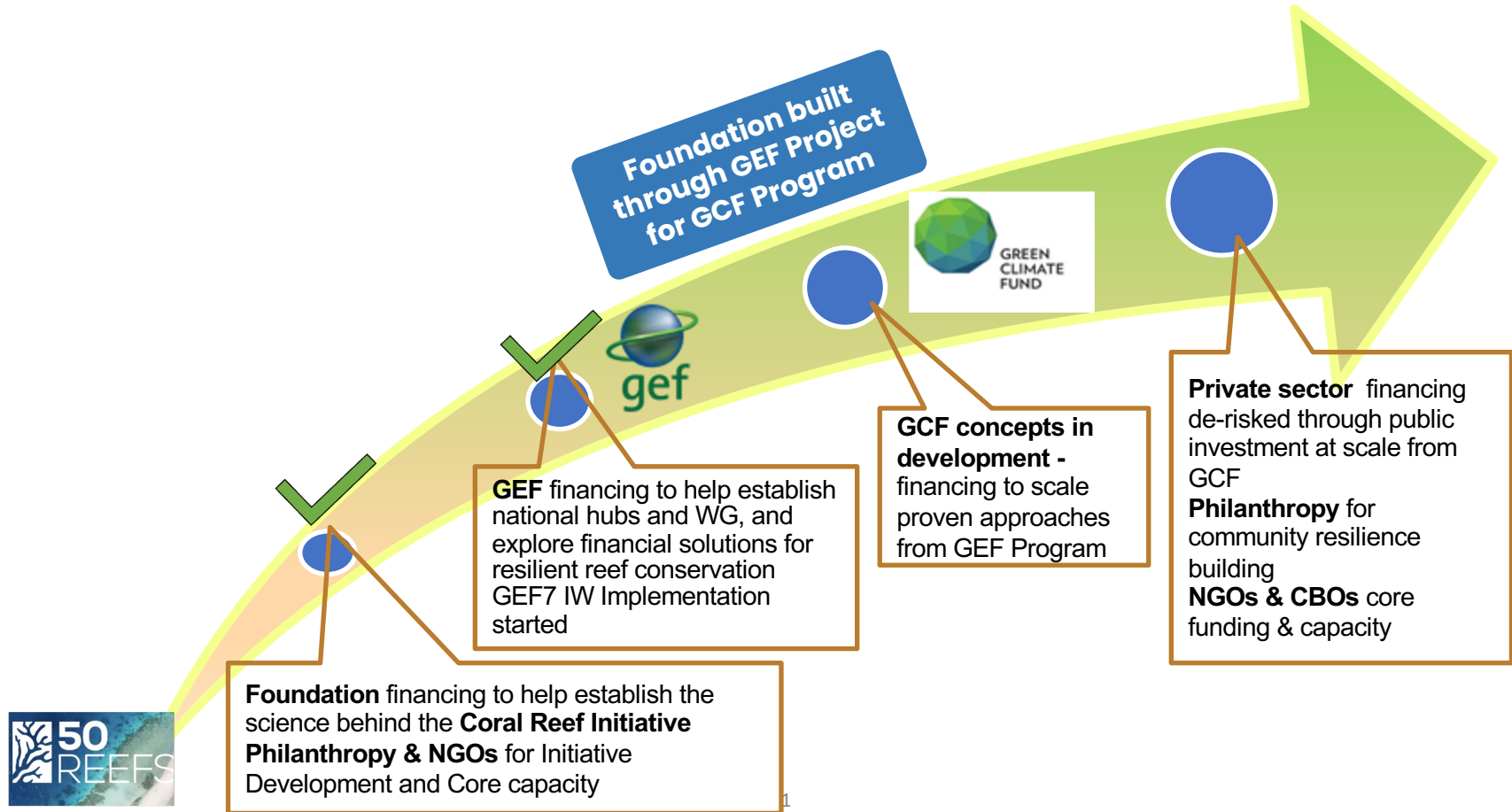
Year 1 Target:  
NA

Percent of monitoring plan effectively implemented and used to support communication, accountability and adaptive management

Year 1 Target:  
2 PPRs, 4 QFs, 1 RF

# WWF Coral Reef Rescue Initiative

## Coordinated Approach with GEF and GCF






Coral Reef  
Rescue Initiative

# Monitoring, Evaluation & Learning

# CRRI Service Blueprint

 The picture can't be displayed.



**Reef Cloud**  
Project Data

Reef file survey data, ODS files and historical records in Reef Cloud

**MERMAID**  
Project Data

Reef file survey data, ODS files and historical records in MERMAID

**KoboToolbox**

Kobo Toolbox accessed through the browser, or Kobo Collect App.

**mongoDB**

Mongo DB, PostgreSQL and Redis database layer for standardising all data inputs.

**Power BI**

Power BI accessed through the browser, or deployed through a secure static website.

**Donor reports**

Donor reports are generated by the system and emailed to existing clients and partners.

**Reef Surveys**

Reef file surveys recorded on paper by reef trackers

**Social Surveys**

Formal and informal surveys recorded on paper

**Economic Surveys**

Quarterly and monthly surveys recorded on paper

**Policy Surveys**

Quarterly and monthly surveys recorded on paper

**Indicator Survey**

Reef report (mobile survey) or format required for reporting.

**Survey Creation**

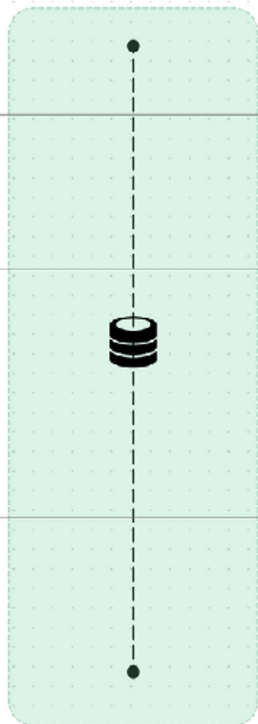
Surveys created for each indicator on desktop or other general data devices.

**Workplan / Action Checklist**

Users can generate or set action checked off by Project Managers in Kobo

**Checklist Creation**

Desktop / Action checklists and surveys created for planning actions



### Outcomes & Monitoring

**Indicator Chart / Report**

**Indicator Chart / Report**

**Outcome Dashboards**

e.g. Outcome 11 shows carbon levels related to % cover of key habitats, diversity of reef life etc.

### Outputs

**Output / Action Registers**

e.g. Reef file surveys conducted in 12 sites across 4 RMPs in 2020

**Component Report Cards**

e.g. Outcome 11 shows an improvement in 3 of 4 outcomes

**Initiative Report Cards**

e.g. Overall the various levels of improvement in 3 of 4 outcome components

**Alerts**

Initiative stakeholders can setup alerts when there is a change in a metric

All reports and charts will show change over time if historical data is available (i.e. from past surveys in the filtered area)

Data for all report cards, dashboards, reports and charts is updated on a determined schedule (e.g. weekly)

All report cards, dashboards, reports and charts are filterable by country. All reports are filterable additionally by site.

**Output / Action Reports**











Regular reports to assist if needed for strategic planning actions

- All Countries
- Fiji
- Solomon IS
- Philippines
- Indonesia
- Madagascar
- Tanzania
- Cuba

 **All Countries**

Funds Allocated  
\$30M USD

Funds Spent  
\$25M USD

Component	Score/100	Trend	Activity completion	Outcomes
Healthy Land & Seascapes	96		<div style="width: 100%;"><div style="width: 100%; background-color: #0056b3; color: white; text-align: center;">100%</div></div>	
Resilient Communities	88		<div style="width: 90%;"><div style="width: 90%; background-color: #0056b3; color: white; text-align: center;">90%</div></div>	
Networks & Knowledge	29		<div style="width: 30%;"><div style="width: 30%; background-color: #0056b3; color: white; text-align: center;">30%</div></div>	
Sustainable Blue Economies	85		<div style="width: 80%;"><div style="width: 80%; background-color: #0056b3; color: white; text-align: center;">80%</div></div>	
Global Action & Innovation	55		<div style="width: 50%;"><div style="width: 50%; background-color: #0056b3; color: white; text-align: center;">50%</div></div>	



← Back

🌐 Global

Score: 1250

Trend: **Achieving** ↗

Activity progress: 60%

## Outcomes

**1.1** Loss of coral reefs is reduced or reversed ➤

0 ➔

Activity Progress 60%

**1.2** Implementation of land & sea management ⬅

## Outcome Indicators

## Scores

## Outputs

1. % cover of key habitats (including coral, seagrass, mangroves)	0	➔
2. Abundance and diversity of coral reef fish	0	➔
3. Rate of change in key habitats in BCU over time relative to baseline	0	➔
4. Decreased run off of sediments and agrochemicals (water quality) along 'disturbed' coastlines and river catchments	0	➔
5. % of coastal fisheries in a recovering or recovered state	0	➔
6. Number of fishers benefiting from stable and resilient fisheries with equal opportunities for gender	0	➔
7. Three dimensional structure and therefore habitats of the reef and associated ecosystems	0	➔

All Countries

Fiji

Solomon IS

Philippines

Indonesia

Madagascar

Tanzania

Cuba



### Coral Reef Rescue Initiative Knowledge Hub!

Supporting research, teaching and learning, and conservation and community development action



### Making Sense of Climate Denial

Climate change is having a devastating impact on coral reef ecosystems around the world. Conserving these precious marine treasure troves requires a global agreement and a strong commitment to collaboration. Despite a clear scientific consensus on the existence and impact of human caused global warming and the need to act quickly, myths and misinformation are surprisingly widespread.

[READ MORE](#)



### Coral Reefs: Intro to Challenges and Solutions

Coming October 2023

[READ MORE](#)

## MOOC Components (moving towards Micro-masters)

1. MPCA design
2. CARE – climate Justice MOOC (Gender Transformative approaches)
3. Sustainable Blue Economy
4. Farmer Field Business School – translation to coastal communities



## The University of Queensland: Coral Reefs: Introduction to Challenges and Solutions

Explore the one of the world's most unique ecosystems, tropical coral reefs, while understanding the key threats to reef health and their solutions.



**7 weeks**  
2-4 hours per week



**Instructor-paced**  
Instructor-led on a course schedule



**Free**  
Optional upgrade available

### There is one session available:

After a course session ends, it will be [archived](#).

**Starts Oct 31**  
Ends Nov 1, 2024

[Enroll](#)

I would like to receive email from UQx and learn about other offerings related to Coral Reefs: Introduction to Challenges and Solutions.





DONATE

# Gender Equality in Coral Reef Socio-ecological Systems

SCROLL TO EXPLORE THIS PUBLICATION



## REACH

women & men as participants

## BENEFIT

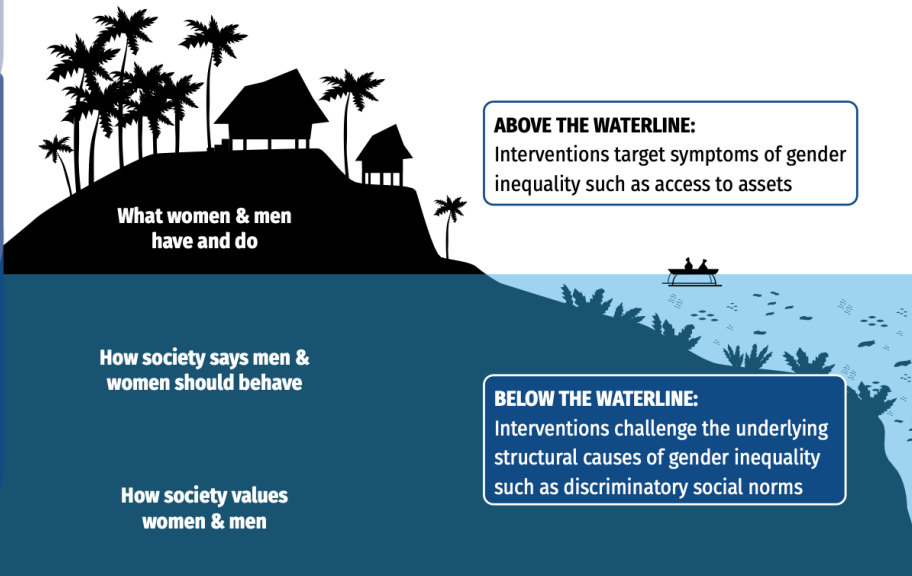
provide access to resources & benefits to women & men

## EMPOWER

promote women & men's ability to act on strategic decisions

## TRANSFORM

challenge underlying gender norms, relations & structures underpinning inequalities



Helping People and the Planet Thrive





# Gender Transformative Approaches for Advancing Gender Equality in Coral Reef Social-ecological Systems

Good Practice and Technical Brief



Helping People and the Planet Thrive



## Advancing Gender Equality for Equitable Livelihoods in Coral Reef Social-ecological Systems

Sarah Lawless, Jacqueline Lau, Cristina Ruano-Chamorro, Emily Corcoran, Philippa Cohen, Cynthia McDougall



Helping People and the Planet Thrive







## CRRRI Coordination Team



**Connie Gu (WWF)**  
CRRRI Coordinator  
[cgu@wwf.org.au](mailto:cgu@wwf.org.au)  
Brisbane, Australia



**Erin Lord-Lynch**  
Knowledge Hub Lead (UQ)  
[e.lordlynch@uq.edu.au](mailto:e.lordlynch@uq.edu.au)  
Brisbane, Australia



**Carol Phua (WWF Oceans Practice)**  
Coral Reef Rescue Initiative Leader  
[cphua@wwf.org.au](mailto:cphua@wwf.org.au)  
Brisbane, Australia



**KARL DEERING (CARE US)**  
Social Science & Community Approaches Lead



**Larissa Sherman**  
Partnership Outreach & Communications Manager (WWF)  
[lsherman@wwf.org.au](mailto:lsherman@wwf.org.au)  
Brisbane, Australia



**Mark Boehm**  
Head of Design & Strategy (PALO-IT)  
[mboehm@palo-it.com](mailto:mboehm@palo-it.com)  
Australia



**Prof. Ove Hoegh-Guldberg (UQ)**  
Chief Scientific Advisor  
[oveh@uq.edu.au](mailto:oveh@uq.edu.au)  
Brisbane, Australia



**Dr. Joelle Albert**  
Sr. Manager UQID (GEF7 PMU) UQ  
[J.Albert@uq.edu.au](mailto:J.Albert@uq.edu.au)  
Brisbane, Australia

## CRRRI National/Regional Focal Points



**Margaret Vakalabure**  
Pacific Regional Coordinator (Fiji)  
[mvakalabure@wwfpacific.org](mailto:mvakalabure@wwfpacific.org)



**Edward Senkondo (Tanzania)**  
[esonkondo@wwftz.org](mailto:esonkondo@wwftz.org)



**Candika Yusuf (Indonesia)**  
[cvyusuf@wwf.id](mailto:cvyusuf@wwf.id)



**Dr. Patricia Gonzales (Cuba)**  
University of Havana  
[patrig75@yahoo.es](mailto:patrig75@yahoo.es)





Coral Reef  
Rescue Initiative

**Thank you**

