

Allen Coral Atlas

Powered by **ASU** Arizona State University

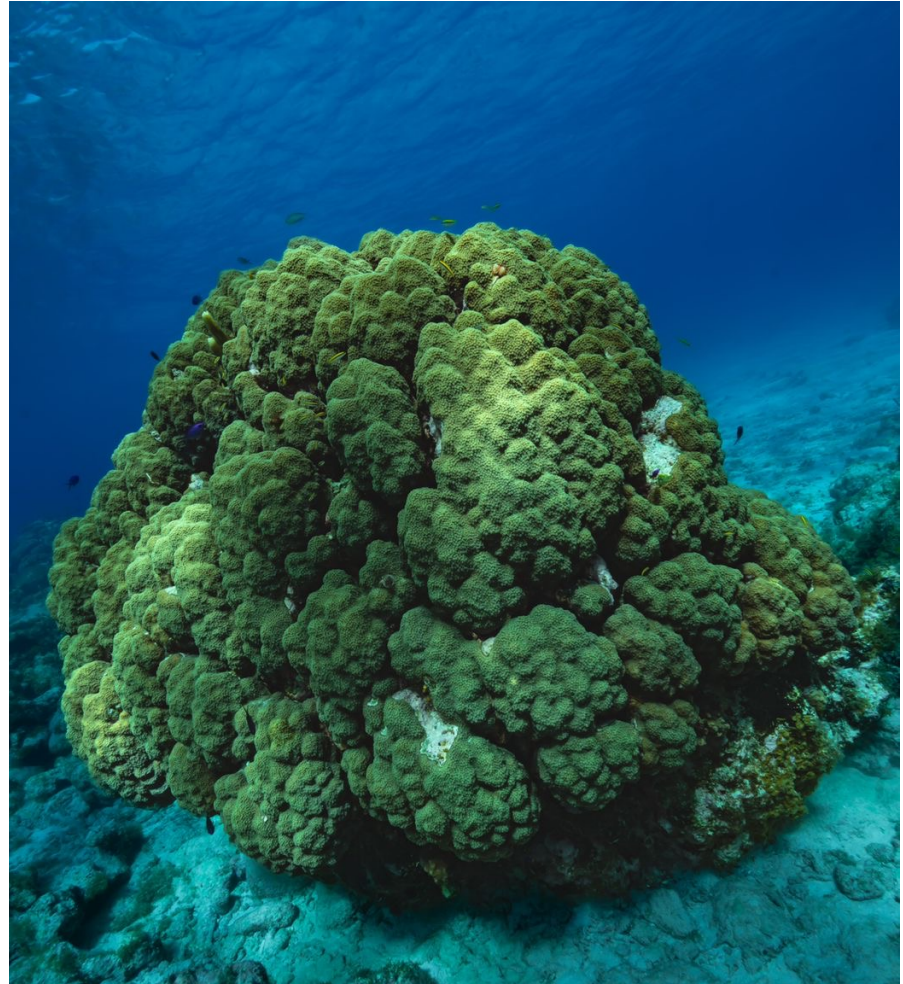
In partnership with



Our mission

To advance local to global reef management through innovative coastal observation and reimagined mapping.

We provide actionable data to inform targeted conservation interventions and promote a shared understanding of ecosystem changes.





Our Products

Global Habitat Maps

Downloadable data on a reef's **benthic** and **geomorphic** make-up, as well as the total **reef extent**

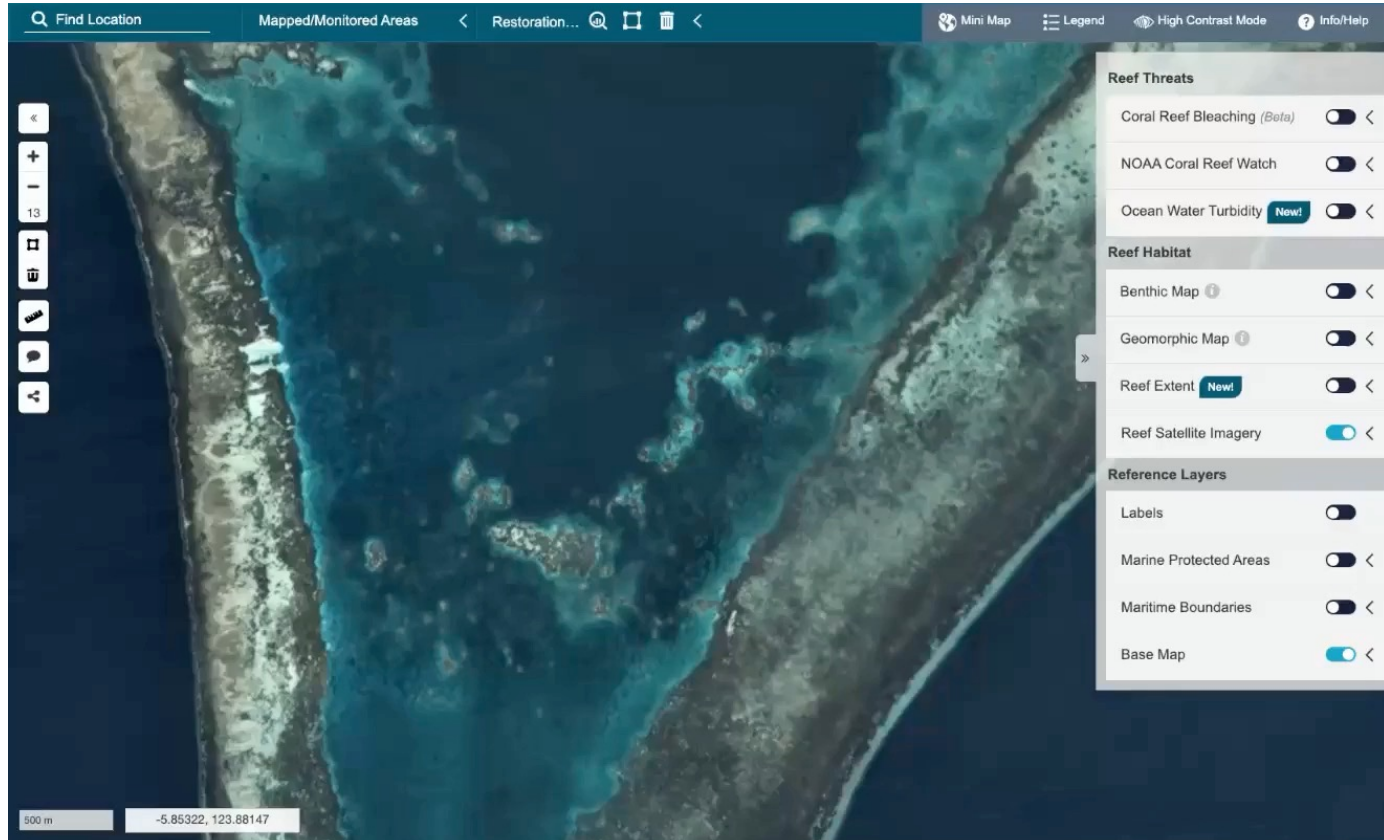
High resolution, satellite-based, and available for every reef around the globe

Our Products

Reef Threats

Dynamic data on **ocean temperature**, detected **coral bleaching**, and changes in **water quality**

Offered on daily, biweekly and quarterly cadence, respectively





SEVERE

12

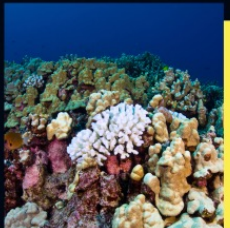
weeks



MODERATE

8

weeks



LOW

4

weeks

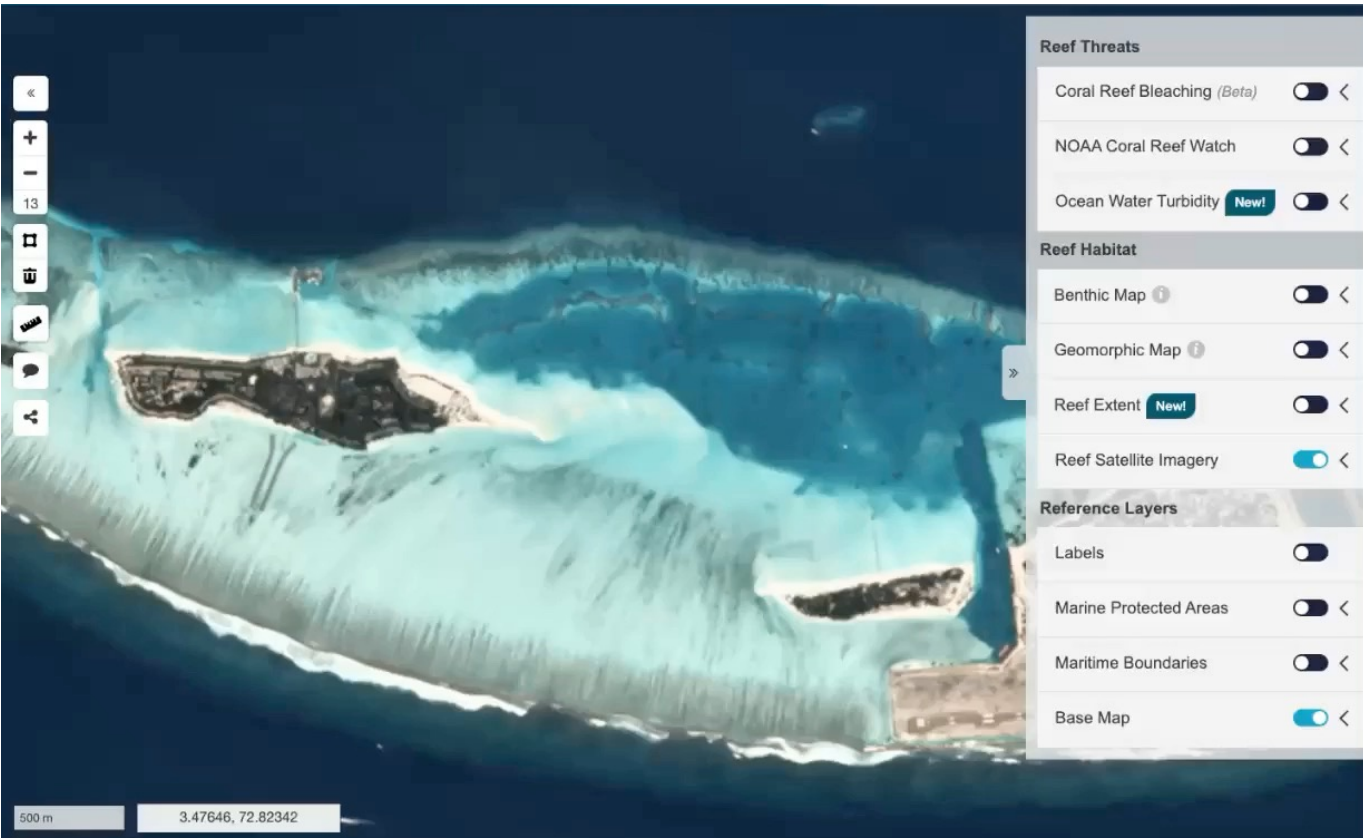
SPOTLIGHT: Bleaching

Satellite-based
Bleaching Monitoring

Low, Moderate, and Severe
levels of bleaching identified

Developed in 2019 using
bleaching event in Hawaii

Actively validating based on
field observations



Our Products

Spatial boundary references

Country boundaries for quantifying nation-scale reef area

Marine protected area boundaries for threat management

Updated as new marine protected areas are created and adjusted



Our User Community

Metrics

Users are from Government, NGOs,
Academia, Education

Over 4,500 logins created

75,000+ website visitors from
nearly every country of the world

14,000+ individual data downloads

200+ bleaching alerts created since
feature's launch in May

Our Users' Successes

Sri Lankan marine protection

Allen Coral Atlas habitat data was the foundation for a **newly established marine protected area** at Kayankerni Reef in Sri Lanka.



"In addition, information from the Atlas are being used by our government departments in detecting bleaching events to make management decisions."

-Hasanthi Dissanayake

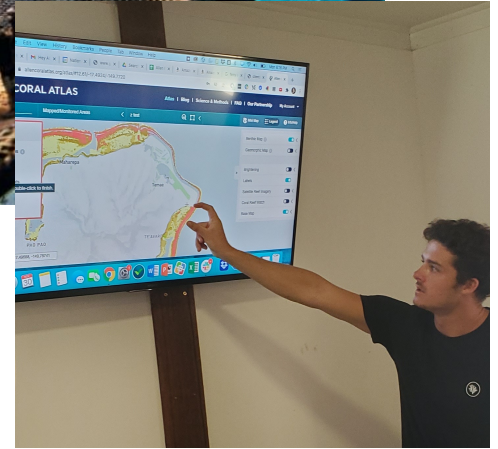
Ocean Affairs, Environment and Climate Change, Government of Sri Lanka

Our Users' Successes

Coral restoration in French Polynesia

An NGO in Mo'orea is scaling their coral outplanting by using Allen Coral Atlas habitat and reef threat data for site selection and mitigation.

To date, they have **planted over 30,000 corals** utilizing Atlas data





Our Users' Successes


Mozambique Nation-Wide Action Plan

Atlas habitat and threat data are used to inform Mozambique's first-ever country-wide Plan of Action

*"We are at the beginning stages, so **the Atlas can be used to grow the Plan of Action.**"*

-Chico Birrell

Consultant to the Government of Mozambique
for a National Action Plan on Coral Reefs

An aerial photograph of a coral reef system. The water transitions from a deep blue in the open ocean to a vibrant turquoise near the reef edge, and then to a lighter, milky blue in the lagoon. Several small, lush green islands are scattered throughout the reef. The overall scene is a beautiful example of a healthy marine ecosystem.

“We’re supposed to push out a marine spatial plan in the next five years. We don’t have local technical expertise to do this ourselves... You’ve come before Christmas”

-Francis Areki
World Wildlife Fund, Fiji

MAHALO!

