

Adapting management for climate change and First Nations co-management:

The Great Barrier Reef Blueprint for Climate Resilience and Adaptation

Margaret Johnson, General Manager
Strategic Policy and Partnerships Branch
Great Barrier Reef Marine Park Authority



The Reef Authority acknowledges the expertise, wisdom, and enduring connections that have informed the guardianship of the Reef for millennia. We pay our respects to the Traditional Owners as the first managers of this Land and Sea Country, and value their traditional knowledge which continues to inform the current management and stewardship of the Reef for future generations.



BUILDING ON OUR 2017 BLUEPRINT WITH A MORE STRATEGIC APPROACH



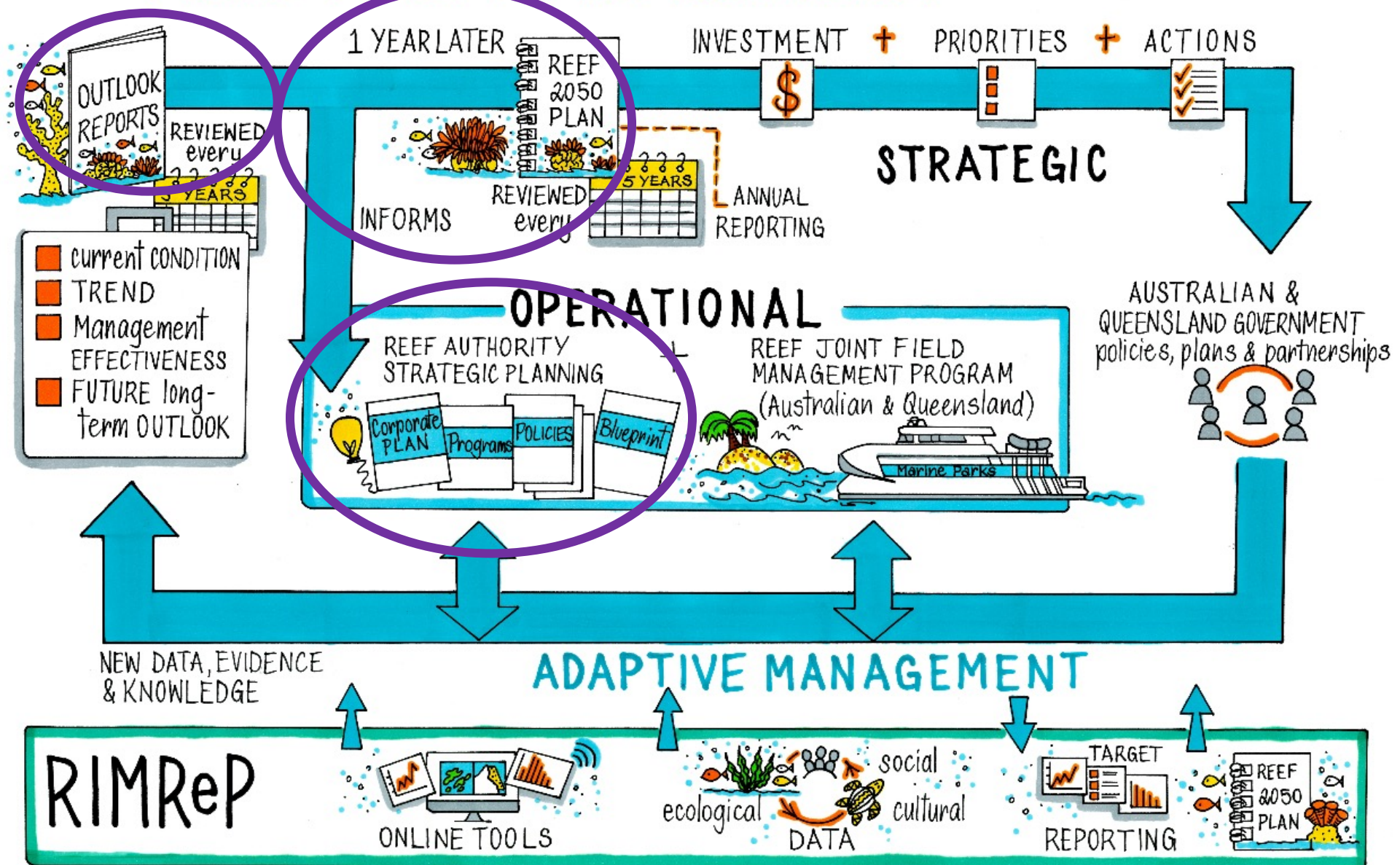
Great Barrier Reef Blueprint for Climate Resilience and Adaptation 2023

Our 2017 Blueprint was a rapid response to an acute crisis (unprecedented Reef impacts from 2015 – 2017)

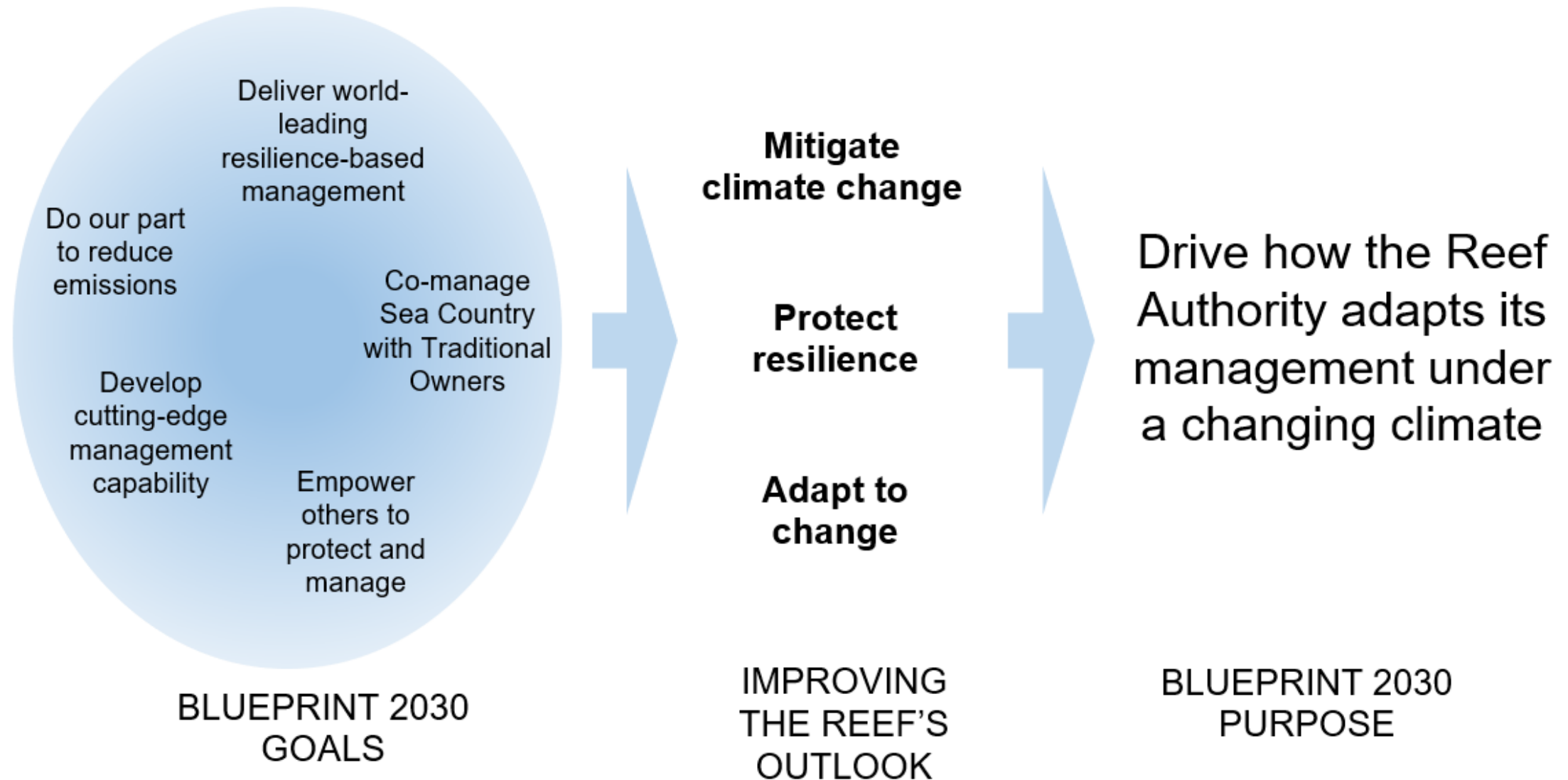
Blueprint 2030 is a strategic response to climate change and its future impacts



ADAPTIVE MANAGEMENT CYCLE



BLUEPRINT 2030 OVERVIEW



GOAL 1: REDUCE EMISSIONS

Vision for 2030: The Reef Authority is doing everything in our power to contribute to the world achieving the strongest and fastest reduction of global greenhouse gas emissions.

Actions:

1. Achieve net zero carbon emissions through a robust Sustainability Strategy
2. Encourage initiatives that reduce the carbon footprint of Reef users or minimise the carbon footprint of new developments
3. Partner with experts to deliver innovative advice about reducing carbon emissions
4. Develop approaches to guide how the Reef Authority will proactively engage with the Australian Government's energy transition agenda, emission reduction strategies, and market-based or carbon sequestration initiatives.
5. Work with partners to incorporate relevant parts of the Great Barrier Reef system into the National Ocean Ecosystem Account.
6. Speak for the Reef and advocate for stronger global action on climate change at major international forums (e.g. UNFCCC, BCD, WHC).



GOAL 2: CO-MANAGE SEA COUNTRY

Vision for 2030: Great Barrier Reef management is conducted in a manner that acknowledges, respects, and supports the inherent rights, interests, and aspirations of Great Barrier Reef Traditional Owners.

Actions:

1. Reflect inherent rights, interests and aspirations of Traditional Owners in all new and revised legislation, policy and strategy
2. Encourage Reef users to acknowledge and engage with Traditional Owners of sea country they are accessing
3. Develop and implement a Co-management roadmap
4. Support Reef 2050 Traditional Owner Implementation Plan
5. Sea Country Values Mapping for POM areas
6. Support knowledge sharing by sponsoring participation at events



GOAL 3: EMPOWER OTHERS

Vision for 2030: The Great Barrier Reef is a rallying point for local protection efforts by Reef communities and industries, and a focus for marine protected area managers globally to learn from Australia's experience.

Actions:

1. Use the Reef Authority's position as the trusted source of information on the Reef to better align Reef communications across partners.
2. Adapt Reef Authority legislation, policy and strategy to better support Traditional Owners, communities, and industries to deliver stewardship initiatives.
3. Strengthen domestic and international partnerships to address shared issues and challenges
4. Seek to establish public-private partnerships with trusted and recognised brands to generate broader public support for protecting the Reef.
5. Play a leading role in domestic and international forums and networks related to marine protected area management.

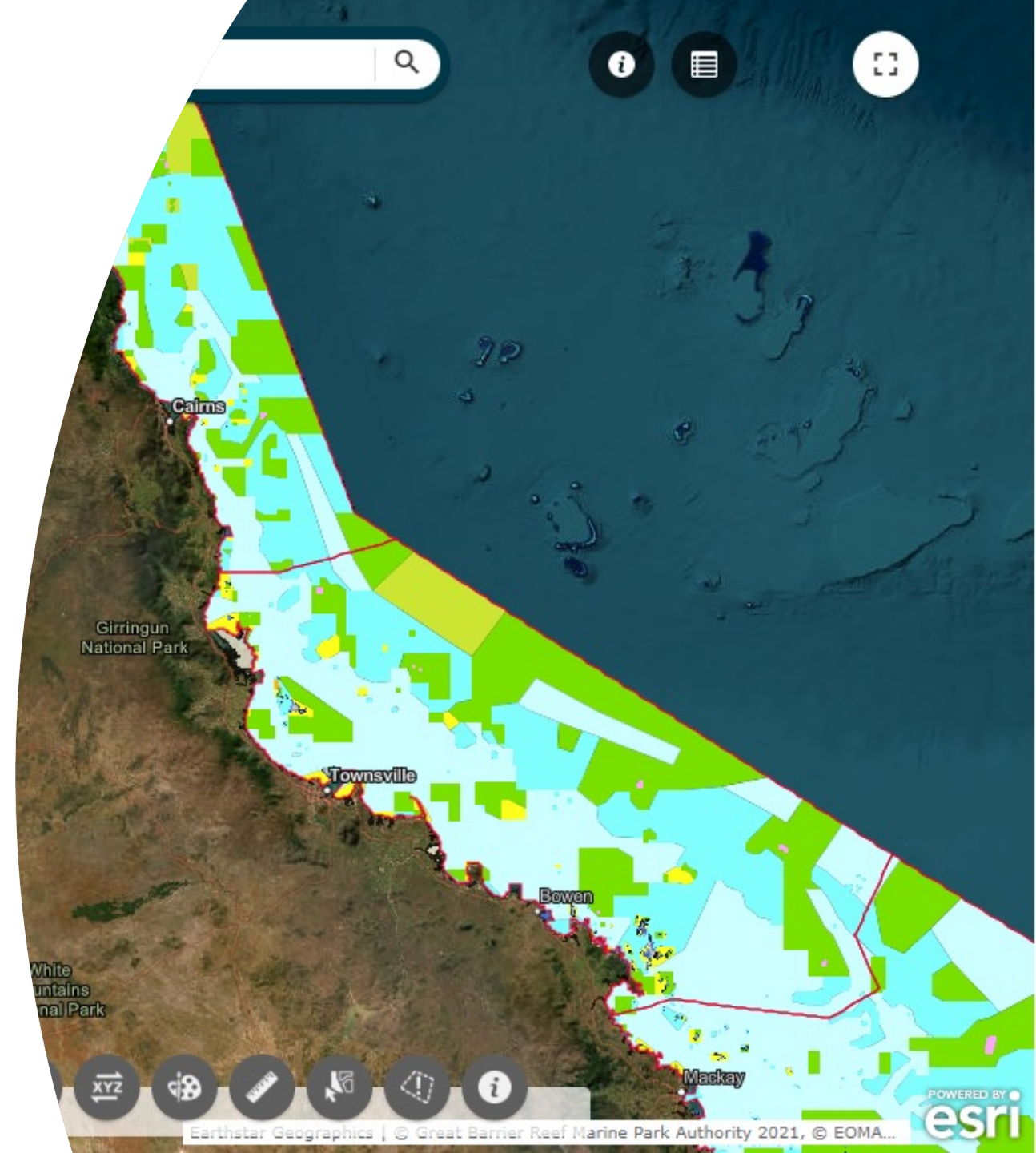


GOAL 4: INNOVATE OUR CAPABILITY

Vision for 2030: The Reef Authority's world-leading management capability is underpinned by cutting-edge policy and legislation, strategy development and decision making, and data and knowledge.

Actions:

1. Review, and if necessary update, the GBRMP Act and the Zoning Plan 2003 to ensure both will be fit-for-purpose as the climate changes.
2. Use decision support mechanisms and vulnerability assessments to prioritise investment to deliver the greatest resilience benefits.
3. Review our use of the Reef 2050 Net Benefits and Cumulative Impact Management policies to best inform decision-making.
4. Understand the current and future effects of climate change on critical habitats, species, and the connections between them.
5. Fill critical knowledge and data gaps that limit management decision making and our ability to evaluate outcomes of management actions.
6. Review and enhance Reef Authority position statements.
7. Consider the Reef Authority's potential role in establishing innovative financing mechanisms (e.g. green bonds, private 'nature positive' investments, or blue economy opportunities)



GOAL 5: DELIVER WORLD-LEADING RESILIENCE-BASED MANAGEMENT

Vision for 2030: The Reef Authority is delivering world-leading resilience-based management that effectively addresses the key threats to the Marine Park, minimises pressures on vulnerable species and habitats, and supports a functioning ecosystem.

Actions:

10 actions covering initiatives like..

- Establish a new dynamic spatial management layer
- Expand Reef interventions
- Incorporate emerging technologies and methods
- Evolve our foundational management programs
- Improve information provided during Reef health incidents
- Support and strengthen measures for improved water quality, sustainable fishing, marine debris





THANK YOU

Margaret Johnson

General Manager Strategic Policy and Partnerships Branch

Margaret.johnson@gbrmpa.gov.au

REEFAUTHORITY.GOV.AU