

# International Coral Reef Initiative – ICRI

37<sup>th</sup> General Meeting  
September 19 – 23 2023

Kailua-Kona



# MSC Foundation Presentation



Marina Anselme, PhD.  
Secretary General

“ We all have the duty  
to leave a better world  
for future generations ”

**Capt. Gianluigi Aponte**  
Chairman of MSC  
Foundation



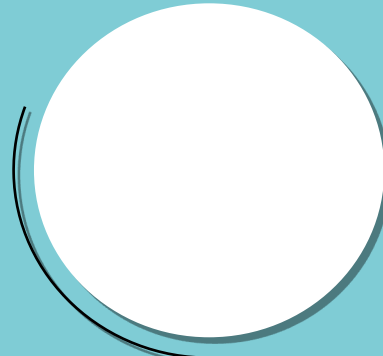
# MSC FOUNDATION



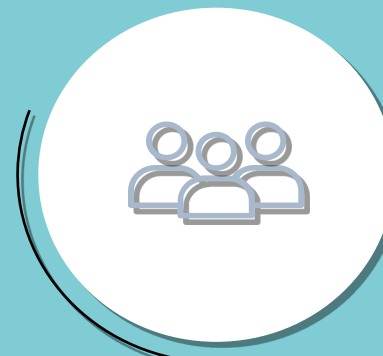
An independent **non-profit organization** established to **lead, focus and advance** the MSC Group's conservation, development and humanitarian commitments worldwide



Established in  
June 2018  
by the Aponte Family



Headquartered  
and registered in  
Geneva, Switzerland



Board of Directors: 6  
Advisory Board: 4  
Secretariat: 15  
Shared services: 10



# GOVERNANCE



# THE ADVISORY BOARD



## **Prof. David Smith: Chief Scientific Advisor**

Professor of Marine Biology at the University of Essex, specializing in marine ecology and conservation. A research scientist for +20 years, he has published over 120 papers on marine biology, mostly focused on the ecology and conservation of coral reefs.



David brings a wealth of **practical experience** to the MSC Foundation's programme **selection, design, evaluation and management**, while also providing guidance regarding the selection of new members of the Strategic Advisory Board.



## **Carl Gustaf Lundin**

Mission Blue advisor and ex MD; +20 years in the International Union for the Conservation of Nature (IUCN) as Principal Scientist and Director of the Global Marine and Polar Programme



Carl Gustaf provides **expert guidance on marine protected areas**, the conservation of ecosystems and endangered marine species, sustainable fisheries management, climate change effects on marine resources, ocean governance, offshore marine energy, marine invasive species, polar issues, coastal livelihoods, coastal carbon sequestration, oil spills, marine industries, pollution and marine policy.



## **Mike Horn**

South African-born Swiss professional explorer and world's top adventurer. First man to travel without a dog or motorized transport to the North Pole during winter.



Mike will support the positioning of the MSC Foundation in the field of **innovation and education**, bring practical expertise to programme selection and design, contribute to the strategic guidance to the sustainable development

# MSC FOUNDATION



## OUR VISION

*To restore the critical balance between people and nature within a generation*

## OUR MISSION

*To utilise MSC's global reach and unique knowledge of the sea to take immediate action that contributes to protecting and nurturing the blue planet and all its people.*



## OUR ICON

Represents the entire MSC Group. It epitomises MSC's inextricable link with the sea and embodies MSC's heritage as Masters of the Sea. The unique origami design shows the delicacy of the ocean, while the innocent nature of the paper boat also shows MSC as the family company it is.

# FOCUS AREA



ENVIRONMENTAL  
CONSERVATION



COMMUNITY  
SUPPORT



EDUCATION



EMERGENCY  
RELIEF



# MAPPING MSCF INITIATIVES ON TO THE ICRI PLAN OF ACTION

ICRI Plan Themes and Activities	MSCF Activities Actioned and Proposed		
<b>Theme 1 Preparing for the Future: Promoting Resilient Coral Reefs</b>	1.A – <b>Strengthening policies</b> – Supporting <b>conservation and recovery of coral reefs and associated ecosystems</b> through resilience-based management frameworks	Establishing the Ocean Cay Marine Reserve (agreed in principle – to be ratified).	Applying resilience-based management approaches for Ocean Cay reserve
	1.B – Promote <b>capacity building</b> for applying resilience-based management approaches <b>to coral conservation</b>	Working within multiple locations, partners and stakeholders to established best RBM approaches within tropical coastal ecosystems through direct knowledge exchange.	Seeking new partnerships to deliver RBM approaches across multiple locations where MSCF has existing footprint.
	1.C – Promote and <b>build capacity for the restoration</b> of resilient coral reefs	Initiated coral restoration activities within ocean Cay marine reserve Undertaking research into resilient coral genotypes. Undertaking research in to increasing genetic diversity within a restoration setting.	Utilise knowledge gained from research partners to implement , monitor and adapt, resilient coral restoration approaches



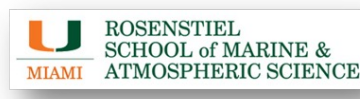
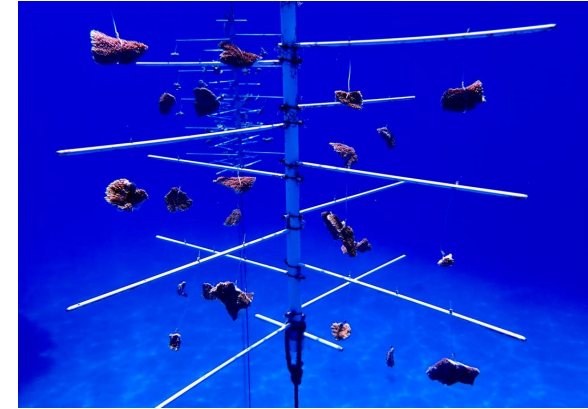
# THE OCEAN CAY MARINE RESERVE AND CORAL RESTORATION SCIENCE

## Theme 1 Preparing for the Future: Promoting Resilient Coral Reefs

Establishing the Ocean Cay Marine Reserve

Research in coral thermal resilience and identification of resilient genotype

Manipulation of sexual reproductive cycle to enhance genetic diversity of coral larvae used in a restoration setting



# MAPPING MSCF INITIATIVES ON TO THE ICRI PLAN OF ACTION

ICRI Plan Themes and Activities		MSCF Activities Actioned and Proposed	
Theme 2 – Coral Reef Science and Oceanography	2A – Coral monitoring capacity building	<b>Nature Metrics:</b> Utilising advanced technologies (e.g., photogrammetry, 3D modelling, acoustics) in monitoring	Initiating new collaborations with Nature Metrics to sample <b>eDNA</b> in hard-to-reach locations whilst in transit. Building the e-bioatlas for global biodiversity knowledge / marine waters
	2B – The Global Coral Reef Monitoring Network (GCRMN)	<b>IUCN Red list update</b>	Undertaking monitoring of reefs in multiple locations.
Theme 3 – Local Threat Reduction: Integrating Response Planning Frameworks	Outcome: Various coral reef response plans are reviewed and integrated into a common framework to simplify and facilitate response for local coral managers	Adaptative Management of the Ocean Cay Marine Reserve	Contributing to identify threats and opportunities to safeguard Ocean Cay biodiversity
		<b>IUCN</b> update of species and Ecosystems <b>red List</b>	Supporting the generation of policies and procedures at national levels to protect in-danger species and ecosystems

# MSCF SUPPORT OF IUCN RED LIST OF THREATENED SPECIES AND ECOSYSTEMS

Theme 2 - Coral Reef Science and Oceanography

Theme 3 - Local Threat Reduction: Integrating Response Planning Frameworks

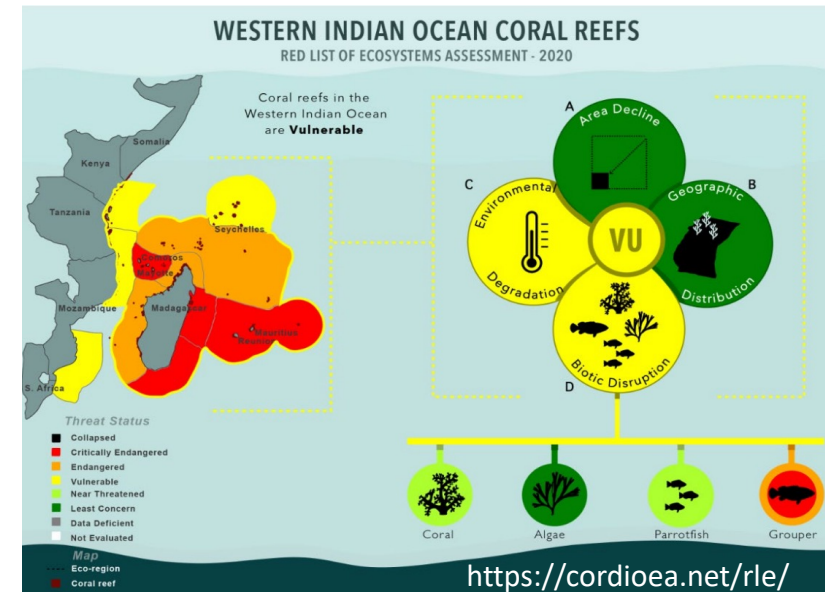


## The Global Marine Biodiversity Assessment

A partnership between the International Union for Conservation of Nature and the Mediterranean Shipping Company Foundation

Update of species and Ecosystems Red List/IUCN

e-BioAtlas/IUCN Nature Metrics



# MAPPING MSCF INITIATIVES ON TO THE ICRI PLAN OF ACTION

ICRI Plan Themes and Activities		MSCF Activities Actioned and Proposed	
<b>Theme 4 – Diversity and Inclusion: Expanding the Coral Reef Community</b>	4.A – Connect with youth audiences	Developed edu-entertainment materials to be used onboard vessels	Establishing children & youth champion programmes
		Empowering youth to tackle environmental challenges	Identifying reliable youth-based solutions for blue entrepreneurial projects with <b>Horn Foundation</b> in Europe and <b>UNICEF</b> in Ivory Coast Building youth capacities to actively protect the Blue Planet with <b>Marevivo</b> in Italy and Spain, with <b>EPI</b> in Costa Rica
	4.B – Collaborate with Indigenous people and seek to incorporate indigenous and local knowledge into policies and management plans	Working across local stakeholders with inclusive approach	Engaging with local/regional communities to reinforce their contribution to coral reefs/ecosystems protection.

# MSCF EMPOWERING YOUTH TO TACKLE ENVIRONMENTAL CHALLENGES

## Theme 4 – Diversity and Inclusion: Expanding the Coral Reef Community

Empowering youth to tackle environmental challenges

Working across local stakeholders with inclusive approach



# International Coral Reef Initiative – ICRI



**MSC**FOUNDATION



MSC - Internal