



# Global Coral Reef Monitoring Network

Providing scientific information on the status and trends of  
coral reef ecosystems worldwide

ICRI  
Online meeting

14 March 2024

Britta Schaffelke, GCRMN Global Coordinator

# Update on actions from last Steering Committee

## Action

- |                                                                          |                        |
|--------------------------------------------------------------------------|------------------------|
| 1. Regional data science experts nominated to Data Taskforce.            | done                   |
| 2. Invite other interested members to Data Taskforce                     | done                   |
| 3. Initiate series of virtual events for data science knowledge exchange | underway               |
| 4. Revision of GCRMN vision statement                                    | done                   |
| 5. Minor update of GCRMN Implementation and Governance Plan              | <b>Not yet started</b> |
| 6. Survey of the regional nodes                                          | underway               |
| 7. Linking SocMon Regional coordinators with Regional Nodes              | done                   |
| 8. Concept for production of next GCRMN global report                    | underway               |
| 9. Timeline and budget for production of next GCRMN global report        | underway               |



The next global report



# Feedback from ICRI members 2023

The next Report should be/have....

*'User-friendly'*

*'Easy to share and understand'*

*'Easily understandable graphics'*

*'Key messages'*

*'Policy recommendations'*

# Report dimensions

1. Context & audience – the WHY



2. Scope – the WHAT



3. Data – the HOW



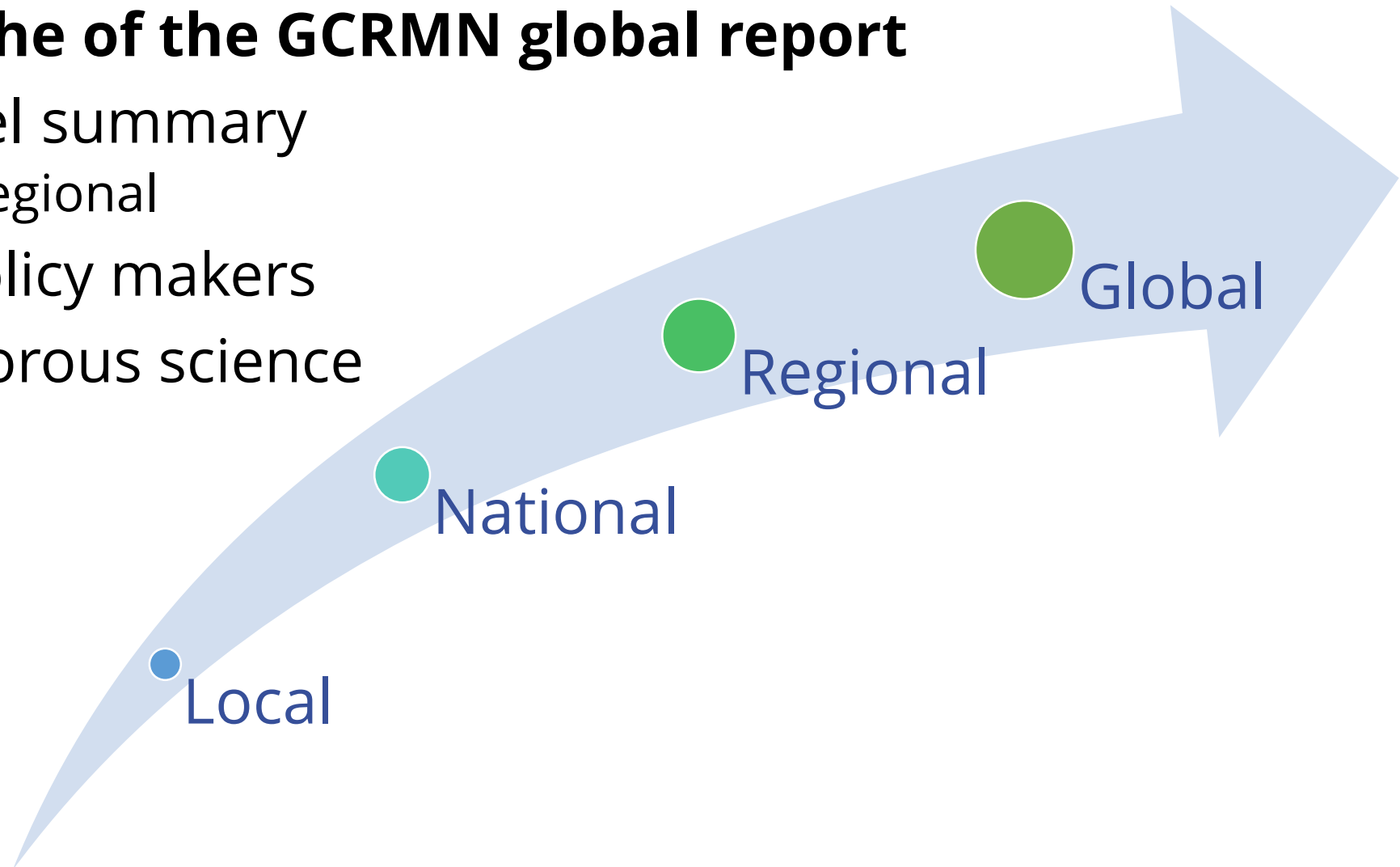
4. Delivery – the HOW



# 1. Context & audience – the WHY

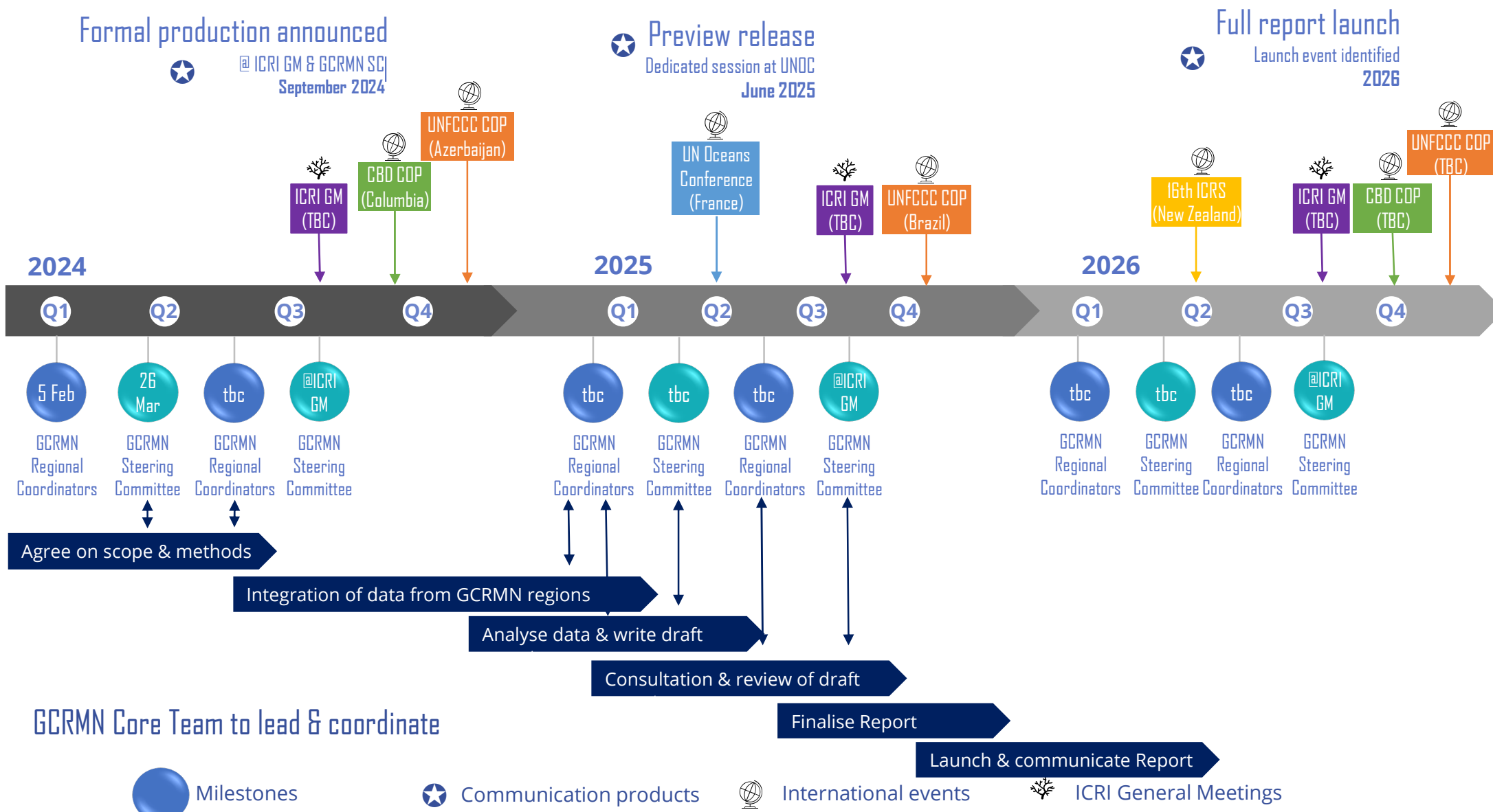
## Role and niche of the GCRMN global report

- Highest-level summary
  - Global & regional
- Aimed at policy makers
- Trusted, rigorous science



# 4. Delivery – the HOW

## GCRMN: Global Report on the Status of Coral Reefs



## 4. Delivery – the HOW

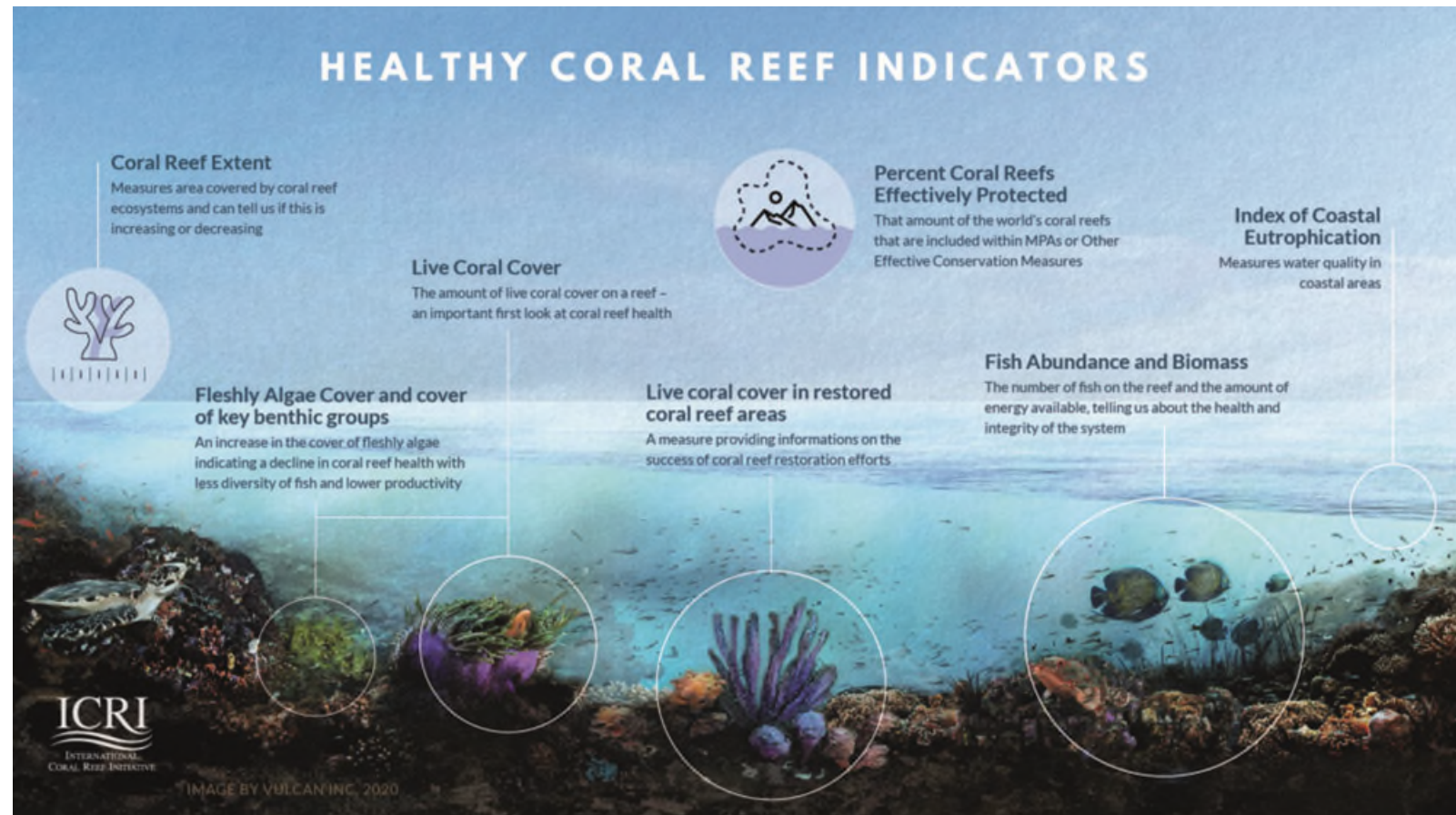
- Form:
  - A production team (high priority)
  - A data integration & analysis team (high priority)
  - A communications team
- Secure funding





## 2. Scope – the WHAT

- Indicator selection – *Regional Node survey underway*
- Summary for Policy makers
- Global chapter
- Regional chapters
- Case studies



### 3. Data – the HOW

- Data analysis method selection - *started*
  - Data sharing process & agreements – *node survey underway*
  - Data collation, processing and integration
  - Data analysis and visualisation
- 
- Authorship principles and incentives



# Recap: Rationale and objectives of the Data Task Force

## Rationale

- Data Task Force (DTF) established May 2023 to: **increase the transparency, reproducibility, and robustness of future GCRMN reports.**

## Objectives

- To improve data integration and analyses to facilitate production of future GCRMN regional and global reports in a more efficient manner.
- To promote good data management practices based on FAIR<sup>1</sup> data principles for the coral reef scientific community.

# Learning from the production of the Pacific regional report

## Indicators selected:

- **Geographic indicators**

- Maritime area
- Mean elevation
- Coral reef extent
- ...

- **Socioeconomic indicators**

- Human population within 5 km of reefs
- Change in human population
- Percentage of human population

- **Disturbance regime indicators**

- SST
  - Warming rate
  - SST per year
  - SST anomaly
- Cyclone
  - Occurrence
  - Trajectories

- **Biological indicators**

- Hard coral cover
- Macroalgae
- Coralline algae
- Turf algae

# Learning from the production of the Pacific regional report

## Fish and SocMon data

### **SocMon data.**

Regional-scale, full data analysis not achievable.

= SocMon data in **case studies for American Samoa, Hawai'i, possibly more.**

### **Fish data.**

Regional-scale, full data analysis not achievable.  
Feasibility study advised.

= Fish data in **case studies for Moorea, New Caledonia, Papua New Guinea, possibly more.**



# Next steps for GCRMN Global report

- Consider feedback from survey of regional nodes
- GCRMN Steering Committee 26 March- seek in principle endorsement of scope & plan
- Data Taskforce background work and engaging with nominated regional reps- next 2-3 months
- Starting data collation ~ mid-year 2024, data cut-off is 2024
- Regular consultation of regional nodes and Steering Committee throughout the process



A global partnership for the preservation of the world's coral reefs and associated ecosystems

An ICRI network to provide scientific information on the status and trends of coral reef ecosystems

**Britta Schaffelke, GCRMN Global Coordinator [b.schaffelke@aims.gov.au](mailto:b.schaffelke@aims.gov.au)**  
**Francis Staub, ICRI Global Coordinator [fstaub@icriforum.org](mailto:fstaub@icriforum.org)**  
**Tom Dallison, ICRI Secretariat [thomas.dallison@icriforum.org](mailto:thomas.dallison@icriforum.org)**

**[www.gcrmn.net](http://www.gcrmn.net)**