



The Commonwealth

#BlueCharter
@commonwealthsec
@nmco2

The Commonwealth Blue Charter: Collaboration Towards Protection and Restoration of Coral Reefs

SIDS 4, Antigua, 29 May 2024

Nick Hardman-Mountford

Head of Oceans and Natural Resources, Commonwealth Secretariat

n.hardman-mountford@commonwealth.int



The Commonwealth

The Commonwealth and the Ocean



56 Countries



49 have a marine coastline



1/3 of world's marine waters within national jurisdiction

37 Commonwealth member countries have **45%** of world's coral reefs



Australia and Belize
host the world's two largest barrier reefs

8 of 20 world's largest marine protected areas are in Commonwealth waters



Marae Moana The Cook Islands
World's largest designated marine managed area

World's 1st agreement was signed between Mauritius and Seychelles to co-manage their shared outer continental shelf.

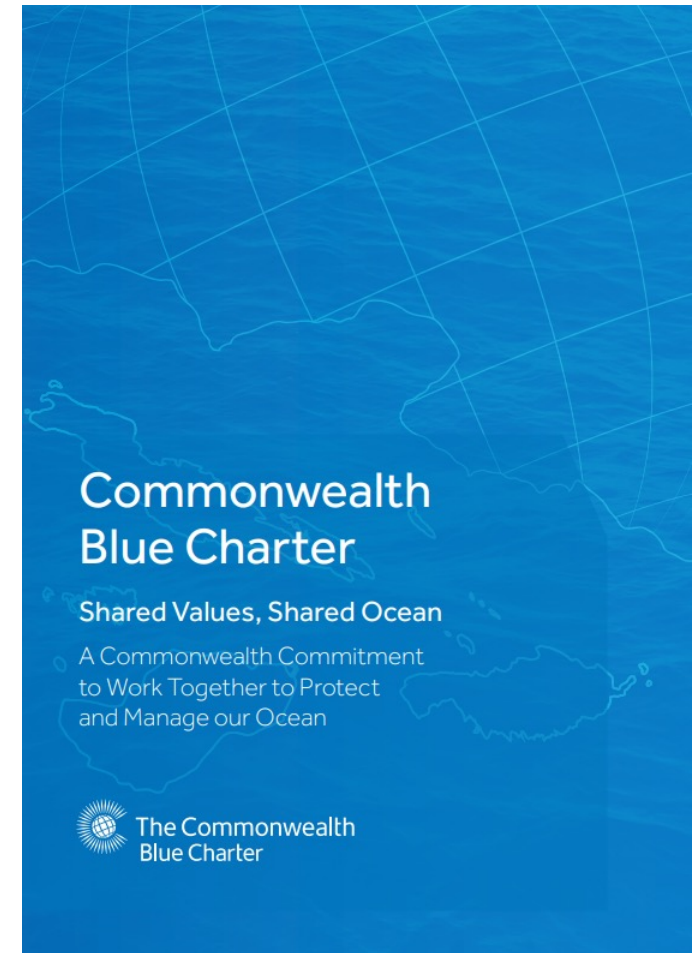


Saya de Malha Bank
(included in this agreement)
hosts the world's largest offshore seagrass meadow.

Commonwealth Blue Charter



Commonwealth Heads of Government Meeting 2018



The Commonwealth Blue Charter



Blue Charter Champions and Action Groups



Coral reef protection and restoration

Australia, Belize and Mauritius



Mangrove ecosystems and livelihoods

Sri Lanka



Marine plastic pollution (CCOA)

United Kingdom and Vanuatu



Ocean and climate change

Fiji



Ocean acidification

New Zealand



Marine protected areas

Barbados and Seychelles



Ocean observations

Canada



Sustainable aquaculture

Cyprus



Sustainable blue economy

Antigua and Barbuda and Kenya



Sustainable coastal fisheries

Kiribati and Maldives





Coral Reef Protection & Restoration Action Group

- Co-Championed by Australia, Belize & Mauritius
- 11 member countries
- 10 out of 20 countries with largest coral reef area in the Commonwealth
- Knowledge sharing, cooperation, best practices



Overarching Goal for Coral Reef Ecosystems

Improved outlook for the health, sustainability and functionality of coral reef ecosystems, which in turn can maintain and enhance livelihood opportunities.



Partnerships:



Commonwealth Blue Charter Project Incubator

GOAL: Assisting governments transition to ocean sustainability, through the development and support of equitable, climate-resilient pilot projects.



- 47 applications
- 7 projects from 6 countries currently supported
- Covering climate, corals, mangroves, blue carbon, coastal fisheries, plastic and nutrient pollution

Building ocean climate monitoring capacity for youth and leaders on the Swahili Coast

- Partners: Kenya Marine and Fisheries Research Institute (KMFRI)
- Phase 1: Identify and establish marine conservation leaders in three distinct regions
- Phase 2: Co-design marine mapping and coral reef monitoring.
- The project is targeted at empowering local communities and promoting long-term capacity-building
- Commonwealth grant award £50,000



Rapid Assessment Projects

- **Ocean climate rapid risk assessment (Rapid CORVI)**
 - 5 countries, 7 months (completed)
 - Barbados, Dominica, Kiribati, Mauritius, Sri Lanka
 - Partners: Stimson, ORRAA
- **Blue economy transition readiness rapid assessment**
 - 2 countries, 5 months
 - Antigua & Barbuda, Trinidad & Tobago
 - Partners: UNEP, HMC

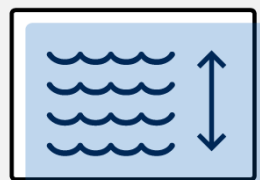


- Pilot methodology
- Assists national prioritisation
- Fast and scalable

Partnership with the Allen Coral Atlas



SATELLITE IMAGERY

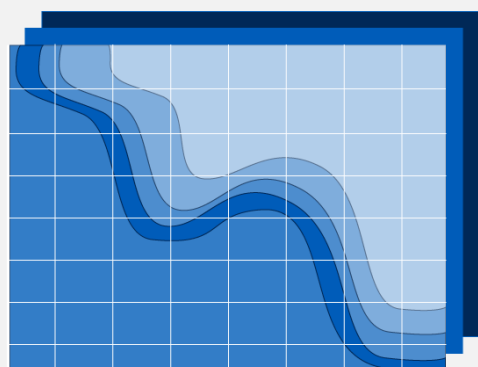


DEPTH DATA



FIELD VERIFICATION

Allen Coral Atlas



The Allen Coral Atlas provides the first regularly updated 3.7-meter resolution satellite images of the world's coral reefs. With the Atlas, coral conservationists, reef managers and scientists have access to information that has never before been available at this scale.



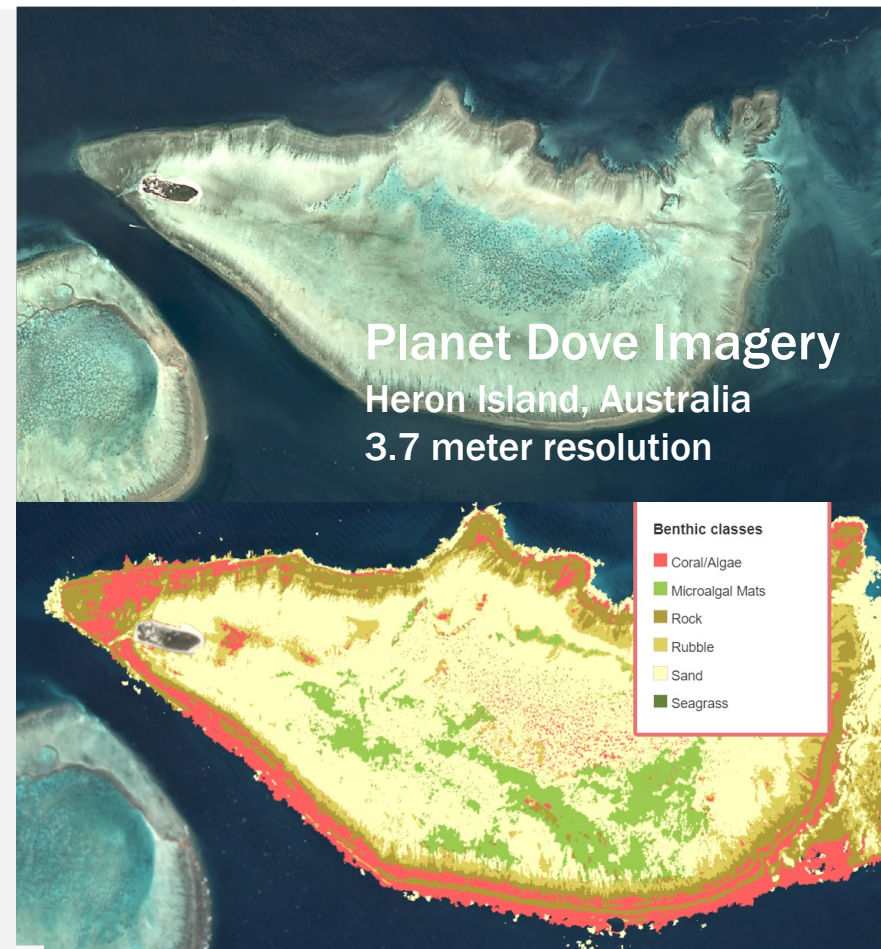
CONSERVATION



RESTORATION

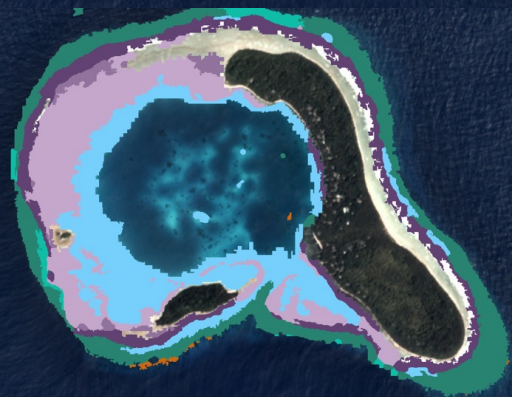
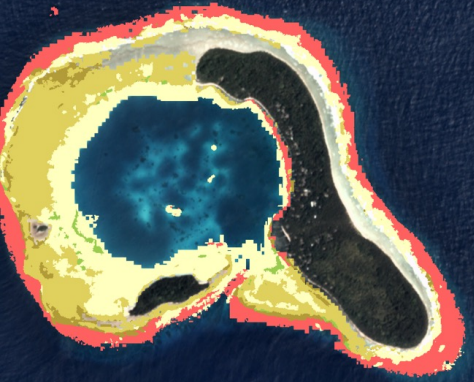


PROTECTION



Fiji

WWF Fiji expedition to Great Sea Reef using the Atlas for MPA implementation, reef status assessment and to inform regional marine spatial planning



Benthic classes

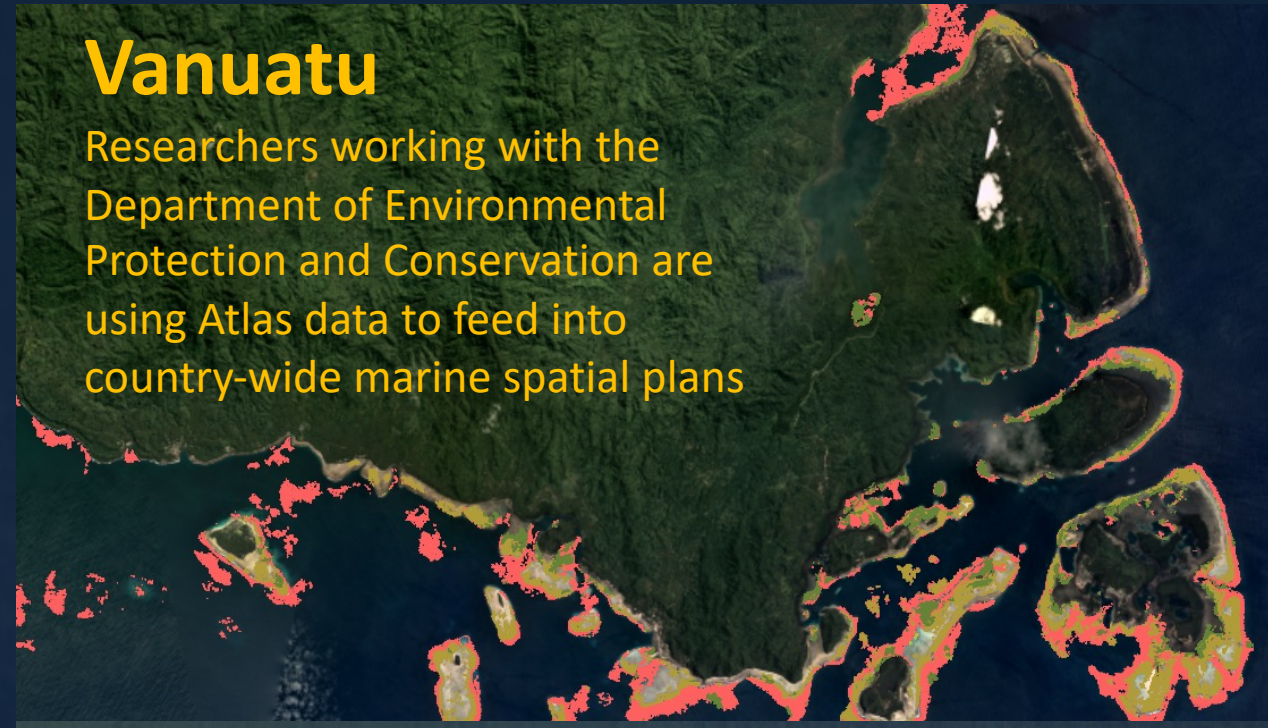
- Coral/Algae
- Microalgal Mats
- Rock
- Rubble
- Sand
- Seagrass

Geomorphic zones

- Back Reef Slope
- Deep Lagoon
- Inner Reef Flat
- Outer Reef Flat
- Patch Reefs
- Plateau
- Reef Crest
- Reef Slope
- Shallow Lagoon
- Sheltered Reef Slope
- Small Reef
- Terrestrial Reef Flat

Vanuatu

Researchers working with the Department of Environmental Protection and Conservation are using Atlas data to feed into country-wide marine spatial plans

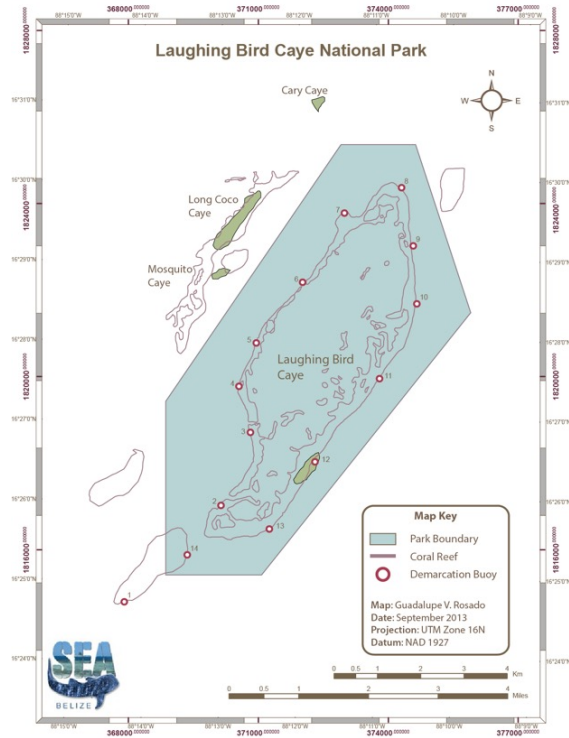


Sri Lanka

Designation of the Kayankerni Reef area as a National Park based on Allen Coral Atlas habitat data



Case study 1: Reef restoration in Belize

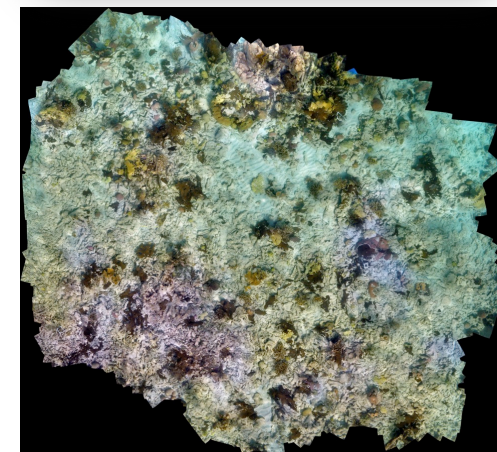


- Laughing Bird Caye National Park – World Heritage Area
- *Acropora* decline: hurricanes, bleaching, white-band disease
- Fragmentation approach – select for heat resistance
- 82,879 nursery-grown corals outplanted
- 10-20% annual coral cover increases *without adding more corals*.
- > 1 ha of shallow degraded reef replenished.
- 89% survival of the outplanted individuals after 13 years.
- Now 23 *in situ* coral nurseries throughout Belize
- Training curriculum & manual developed for coastal community.
- Lessons: involve local community – build expertise – protect grazers and control fishing (no-take zones) – avoid hurricane/bleaching season

CORAL REEF REPLENISHMENT MANUAL



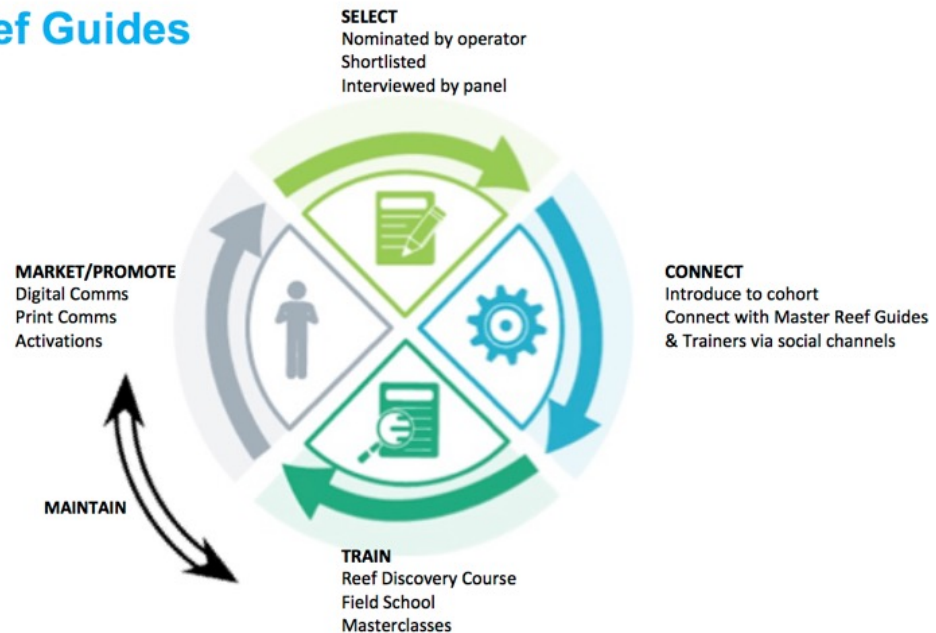
BELIZE



Case study 2: Master Reef Guide program, Australia

- Great Barrier Reef – World Heritage Area – 65,000 tourism jobs
- Healthy reef = healthy industry

Master Reef Guides Model



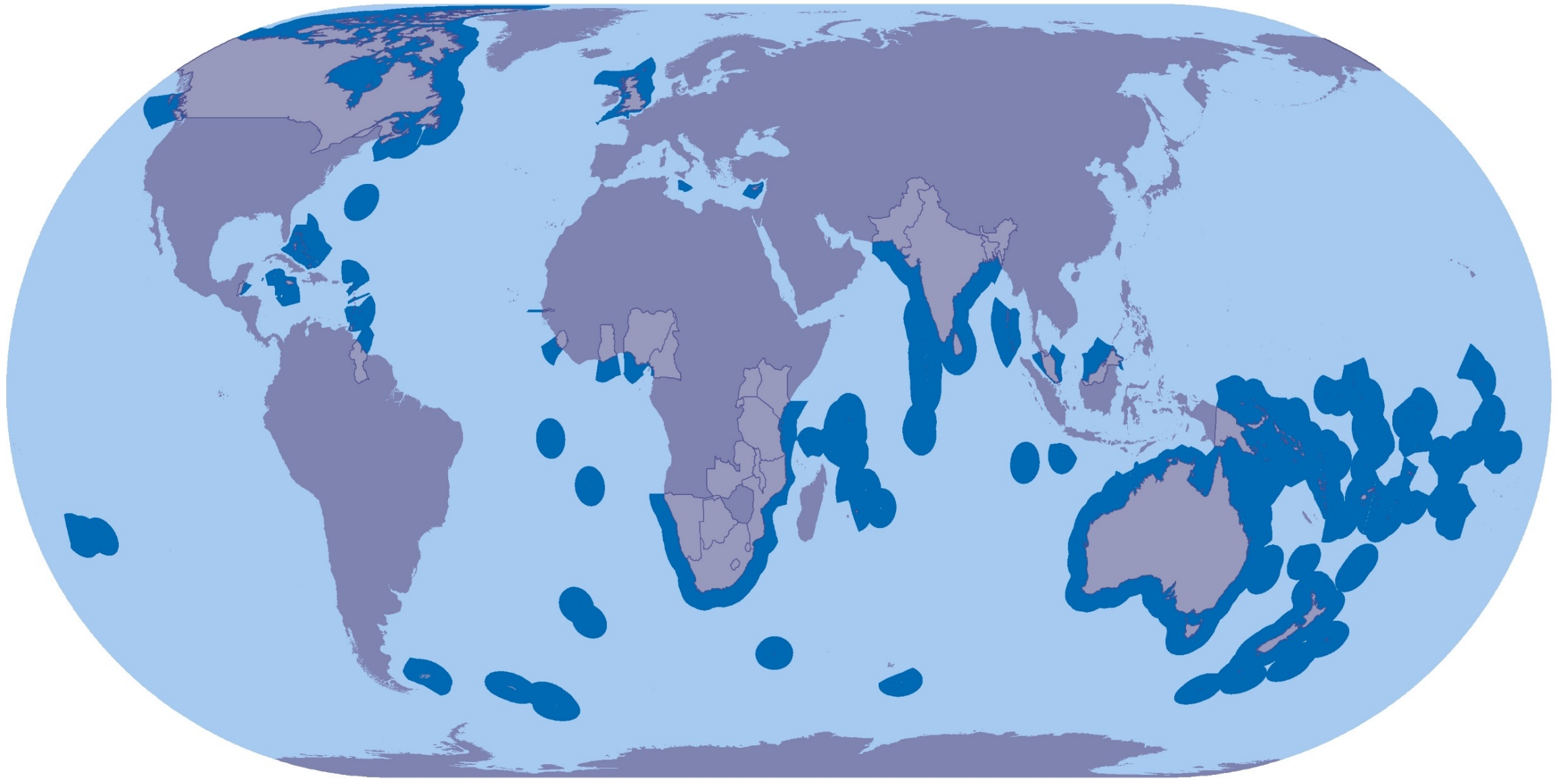
- First-of-kind program for coral reefs.
- Provides industry and government recognized qualification to build capacity of tourism staff.
- Master Reef Guides need to pass a comprehensive selection procedure and training process.
- 3 cohorts of Master Reef Guides trained in 2018/19.





One Resilient Common Future: Transforming our Common Wealth





This map is provided for illustrative purposes only. Information drawn from Flanders Marine Institute (2018) Maritime Boundaries Geodatabase: Maritime Boundaries and Exclusive Economic Zones (200NM), version 10. Available online at: <http://www.marineregions.org> and <http://www.vliz.be/en/imis?dasid=5465&doiid=312>