

ICRI GUIDANCE DOCUMENT ON INTEGRATING CORAL REEFS INTO NATIONAL BIODIVERSITY STRATEGIES AND ACTION PLANS (NBSAPs)

International Coral Reef Initiative Webinar
7th May 2024

Simon Harding Ph.D.

Marine Consultant

ICRS Focal Point for ICRI

Co-chair ICRI NBSAP ad hoc Committee

Research Fellow (Adjunct), Institute of Marine Resources, The University of the South Pacific, Suva, Fiji.



Government Offices of Sweden



Gouvernement Princier
PRINCIPAUTÉ DE MONACO

Presentation Outline – overview of the draft document

- NBSAPs & their alignment with the Kunming-Montreal Global Biodiversity Framework (GBF)
- ICRI NBSAP Ad Hoc Committee
- Guidance for integrating coral reefs and associated ecosystems (Section 2)
- Case studies – examples of successful integration (Section 3)
- Available resources for NBSAP revision (Section 4)
- Step-by-step Guidance for integration

NBSAPs & their alignment with the Global Biodiversity Framework (GBF)

- **NBSAPs are the main vehicle for implementation of the CBD at the national level**
 - key component of the enhanced planning, monitoring, reporting and review mechanism of the Convention for the GBF.
- **Decision 15/6 (Mechanisms for planning, monitoring, reporting and review):**
 - CBD Parties requested to **submit revised or updated NBSAPs, including national targets, by CBD COP16, (guidance provided in Annex I of the decision)**

ICRI NBSAP Ad Hoc Committee

- The **NBSAP ad hoc committee was adopted by ICRI** at its **37th General Meeting** in Kailua-Kona, Hawai'i, United States of America in **September 2023**
- Two objectives of the ICRI NBSAP *ad hoc* committee are to:
 - **Develop a guidance document for revising, updating and implementing NBSAPs to integrate coral reef ecosystems, including guidance on reporting and coral reef indicators, populated with the national case studies, and appropriate alternative resources that align with, and build upon, the GBF Monitoring Framework and previous ICRI *ad hoc* committees**
 - **Develop national case studies for interested and volunteering countries**

Section 2 - Guidance for integrating coral reefs and associated ecosystems: Outline

- 2.1 - Addressing key stressors for coral reefs and associated ecosystems and the drivers of ecosystem degradation
- 2.2 - Reviewing and updating existing NBSAPs (CBD / ICRI Guidance)
- 2.3 – Key GBF Targets and Indicators
- 2.4 – NBSAP implementation – leverage points and policy recommendations
- 2.5 – Existing coral reef indicators – ICRI recommendations

2.1 - Addressing key stressors for coral reefs and associated ecosystems and the drivers of ecosystem degradation

- Need a clear understanding of the main **stressors and drivers** of coastal and inshore marine ecosystem degradation - **national and subnational level**
- Identify / review the key stressors and drivers affecting their coastal and inshore marine environment so that interventions to address them can be incorporated into the revised NBSAP
- Link interventions to one or more GBF action targets through national target setting
- **Engage with all relevant actors** (e.g. government bodies, NGOs, research institutes, academia, regional organisations) to collect the latest information and **understanding of the main threats and impacts affecting coral reefs and associated ecosystems**

2.2 Reviewing and updating existing NBSAPs: CBD / ICRI Guidance

- CBD Parties to revise and update their NBSAPs following the guidance provided in Annex I of CBD Decision 15/6.
- CBD Guidance - range of topics including: NBSAP review, stakeholder engagement, high level political support, national targets and indicators, concrete actions and integration into national plans
- ICRI Guidance suggests how to integrate coral reefs and associated ecosystems into NBSAPs for each point of the CBD Guidance (**Annex 3 of the guidance document**)
- Guidance for completing CBD online template for national targets – coral reef example provided (**Annex 6**)

2.2 Reviewing and updating existing NBSAPs: CBD / ICRI Guidance

- Example – CBD Guidance Paragraph 7 - review the existing NBSAP and targets to assess alignment with the GBF:
- *CBD Parties “should consider, according to national circumstances, elements such as **implementation gaps, existing goals, targets and indicators, the effectiveness of past actions, monitoring systems (including any data and/or knowledge systems and gaps), sectoral and cross-sectoral policies, finance and other means of implementation, and an assessment of how stakeholders, indigenous peoples and local communities, women and youth were involved in the revision and implementation”.***
- This review should consider all the suggested elements in terms of coral reefs / associated ecosystems to ensure strong integration of these systems into the revised NBSAP

2.3 Key GBF Targets and Indicators for coral reefs and associated ecosystems

- Relevance of GBF action targets to coral reefs and associated ecosystems provided (**Annex 1**)
- Relationships between drivers of biodiversity loss, GBF goals and targets for coral reefs explored
- Examples of actions to meet GBF Goal A for coral reefs are provided for Targets 1 to 11 that address the key direct drivers of biodiversity loss (**Annex 4**)
- GBF proposed indicators – highlighted those most relevant to coral reefs and associated ecosystems
- Important to consider the entire GBF (all goals and targets) especially cross-cutting issues such as mainstreaming and capacity building

2.3 - Global Biodiversity Framework Action Targets relevant to Coral Reefs and Associated Ecosystems (21 out of 23 Action Targets)

Drivers of Change*	Primary Action Targets	Secondary Action Targets / Notes
Direct Extraction	<p>T4: Conservation and recovery of species</p> <p>T5: Harvest and trade of wild species</p> <p>T9: Sustainable use of wild species (e.g. fisheries)</p> <p>T15: Business and biodiversity (sustainable production practices and supply chains)</p>	<p>T18: Subsidies and incentives (elimination or reform of harmful subsidies)</p> <p>T16: Sustainable consumption</p>
Sea use change	<p>T1: Spatial planning and retention of wilderness/intact areas (Marine Spatial Planning)</p> <p>T2: Restoration</p> <p>T3: Protected areas and other effective area-based conservation measures (effective marine and coastal ecosystem protection)</p>	<p>T4: Conservation and recovery of species</p> <p>T10: Sustainable agriculture, forestry, and aquaculture</p> <p>T11: Ecosystem services and nature-based solutions</p>
Climate change	<p>T8: Biodiversity and climate change (climate change mitigation and adaptation through nature-based solutions / ecosystem-based approaches)</p>	<p>Linkages to all other drivers for maximising ecosystem health and resilience to climate change</p>
Pollution	<p>T7: Pollution (reduction including nutrients, biocides and plastic)</p> <p>T15: Business and biodiversity (sustainable production practices and supply chains)</p>	<p>T10: Sustainable agriculture, forestry, and aquaculture</p>
Invasive Species	<p>T6: Invasive alien (aquatic) species (management and control)</p>	<p>(T17: Biosafety)</p>
Cross-cutting:	<p>T14: Mainstreaming biodiversity across sectors</p> <p>T19: Increasing financial resources for biodiversity</p> <p>T20: Capacity building and development</p> <p>T21: Information and knowledge</p> <p>T22 & T23: Participation of IPLCs, women, girls, and youth</p>	<p>T16: Sustainable consumption</p>

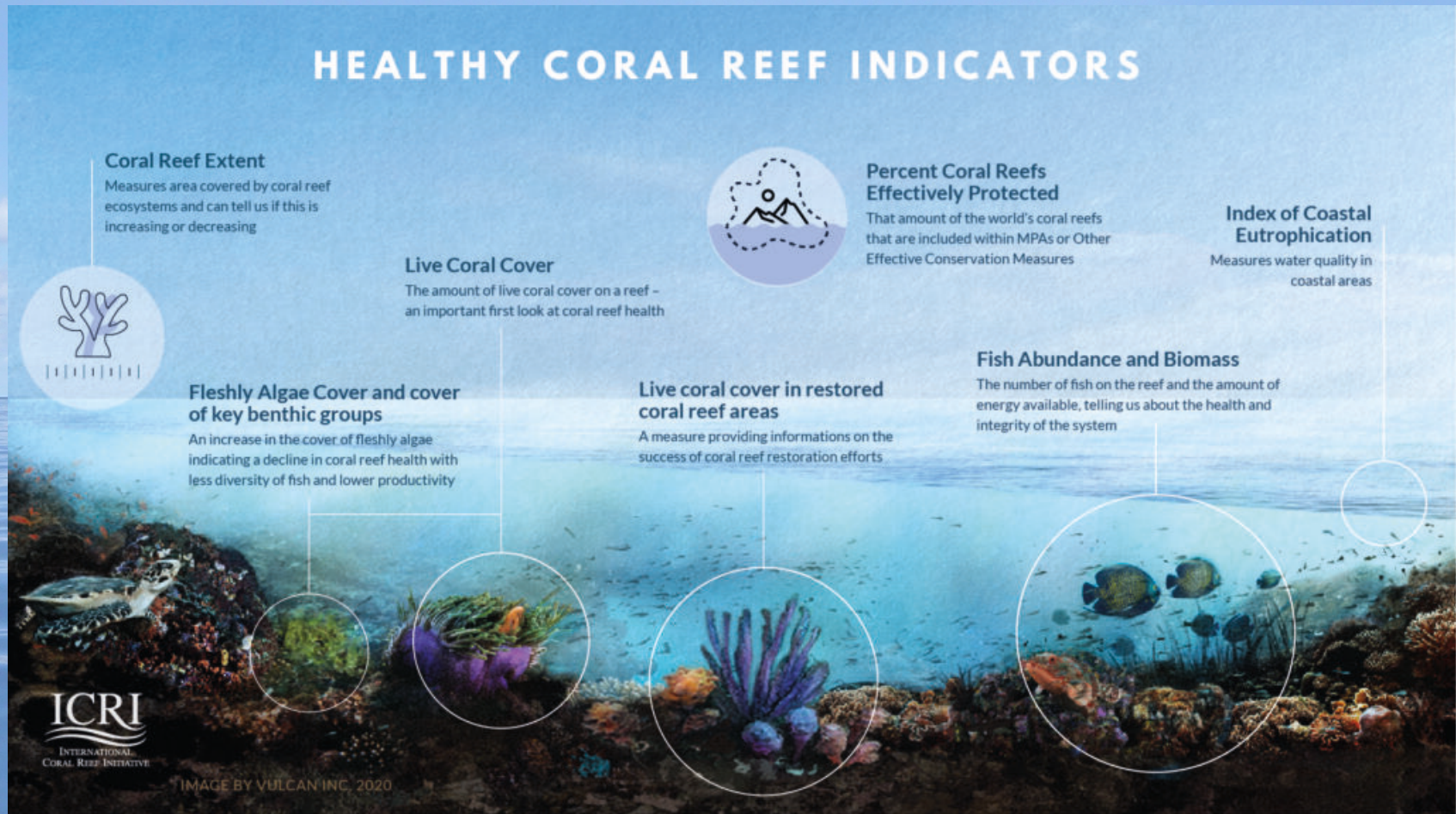
*: IPBES 2019. Global Assessment Report on Biodiversity and Ecosystem Services. Chapter 2.2

2.4 NBSAP implementation – leverage points and policy recommendations

Suggested **leverage points to improve future NBSAPs** so that they can better support the achievement of the goals and targets of the GBF (Cardona Santos et al. 2023):

- Improving inclusive communication;
- Translating targets into concrete measures and defining clear responsibilities;
- Fostering cross-sectoral commitment;
- Strengthening NBSAPs' legal status and/or enshrining targets into national laws;
- Ensuring adequate public funding for NBSAP implementation;
- Reforming and redirecting subsidies harmful to biodiversity;
- Ensuring coordination among sectors and levels of governance, and;
- Strengthening accountability frameworks

2.5 – Use of existing coral reef indicators



ICRI's Recommended Healthy Coral Reefs Indicators for inclusion in the GBF

2.5 - ICRI coral reef indicators – GBF inclusion

Indicators for coral reef health:

Coral Reef Indicator	Goal / Target	Included in GBF?	GBF indicator type
Live Coral Cover	Goal A, Target 1	Yes	Complementary
Coral Reef Extent	Goal A, Target 1	(Yes)	Complementary (T1)
Fleshy Algae Cover and Cover of key benthic groups	Goal A, Target 1	Yes – as two indicators	Complementary
Fish Abundance and Biomass	Goal A, Target 1	Yes	Complementary
Area of coral reefs included in (effectively managed) MPAs and OECMs	Target 3	No	(Headline and Complementary)
Index of coastal eutrophication	Targets 7 and 8	Yes	Headline and Complementary
Live coral cover in restored reef areas	Goal A, Target 1	No	

Priority Indicators for development:

Coral Reef Indicator	Goal / Target	Included in GBF?	GBF indicator type
Red List of Ecosystems	Goal A, Target 1	Yes	Headline and Complementary
Hard coral genera richness	Goal A, Target 1	No	
Structural complexity of coral reefs	Goal A, Target 1	No	
CATAMI classification scheme	Goal A, Target 1	No	
Carbonate budgets	Goal A, Target 1	No	

Section 3 – Case Studies for Countries that have successfully integrated coral reefs and associated ecosystems into their NBSAPS

- Three new case studies developed – France, The Philippines and Palau
- Additional case studies (six countries) highlighted from UNEP-WCMC report (Brooks et al., 2022)
- Type of integration linked to four themes:
 - Addressing underlying causes of biodiversity loss and mainstreaming;
 - Reducing direct pressures and promoting sustainable use;
 - Safeguarding species and ecosystems, and;
 - Enabling and enhancing implementation

Section 4 – Additional Resources for NBSAP revision

Summary of ongoing initiatives and resources available to countries for the assessment and revision of their NBSAPs to align with the GBF

Information, links and recommended actions provided for:

- **The Global Biodiversity Framework Early Action Support Project (GBF-EAS)**
- **The NBSAP Forum**
- **The NBSAP Accelerator Partnership**
- **The Biodiversity Finance Initiative (BIOFIN)**
- **SPACES Coalition**
- **Secretariat of the CBD**
- **World Wide Fund for Nature (WWF) – The NBSAPs we need**
- **The Nature Conservancy (TNC) – NBSAP infographic**

Step-by-step Guidance on integrating coral reefs and associated ecosystems into NBSAPs:

1. Develop a **timeline for the NBSAP revision process** - submit the revised NBSAP to the CBD before COP16 if possible;
2. Establish a **national working group for NBSAP revision** - include all actors involved directly or indirectly with coral reefs and associated ecosystems;
3. **Assess the existing NBSAP** according to the criteria in the CBD guidance for revising or updating NBSAPs, through the lens of coral reefs and associated ecosystems (Section 2.2). Consider the **ICRI guidance** provided to integrate coral reefs and associated ecosystems into NBSAPs for each paragraph of the CBD guidance (Annex 3);
4. Identify / revisit the **main stressors** for coral reefs and associated ecosystems and the **key drivers of biodiversity loss** for these ecosystems at the national or sub-national level (Section 2.1);
5. Develop **actions to address the key pressures and drivers** (see Annex 4), with associated national targets that are closely aligned with GBF goals and targets, using the guidance on the relevance of GBF targets to coral reefs and associated ecosystems (Annex 1, Section 2.3);

Step-by-step Guidance on integrating coral reefs and associated ecosystems into NBSAPs:

6. Consider how to incorporate **mainstreaming** into the NBSAP that is **linked to coral reefs and associated ecosystems**, especially in terms of engagement and awareness raising across sectors, with stakeholders, and with indigenous peoples and local communities (Section 2.4);
7. Incorporate proposed **GBF indicators** into the NBSAP monitoring framework that are relevant to coral reefs and associated ecosystems (Section 2.3, Table 1) and **existing indicators for coral reefs** such as those recommended by ICRI (Section 2.5, Table 4);
8. When using the CBD online template for national targets, consider the **example** completed for a coral reef and associated ecosystems focussed target (**Annex 6**);
9. Consider the different **approaches used to successfully integrate coral reefs and associated ecosystems into existing NBSAPs** using the country case studies provided (Section 3). Select one or more approach that is appropriate for your national context;
10. Make use of the **existing initiatives and resources** available to countries to revise and update their NBSAPS such as via the NBSAP Forum (Section 4).

ICRI NBSAP Guidance:

<https://icriforum.org/documents/icri-coral-reefs-nbsaps/>



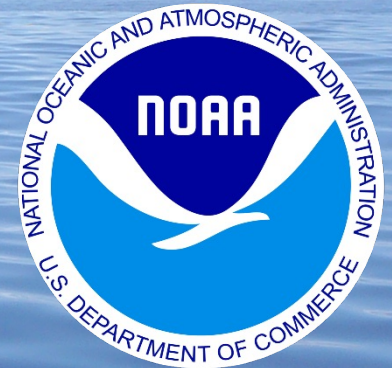
simonharding@yahoo.com

Marine Consultant

ICRS Focal Point for ICRI

Co-chair ICRI NBSAP ad hoc Committee

Research Fellow (Adjunct), Institute of Marine Resources, The University of the South Pacific, Suva, Fiji.



Government Offices of Sweden



INTERNATIONAL
CORAL REEF INITIATIVE



Gouvernement Princier
PRINCIPAUTÉ DE MONACO