

BELIZE BLUE BONDS



Milestone 4: Medium Biodiversity Zones

September 10th, 2024

The International Coral Reef Initiative (ICRI) 38TH General Meeting

Belize Fisheries Department

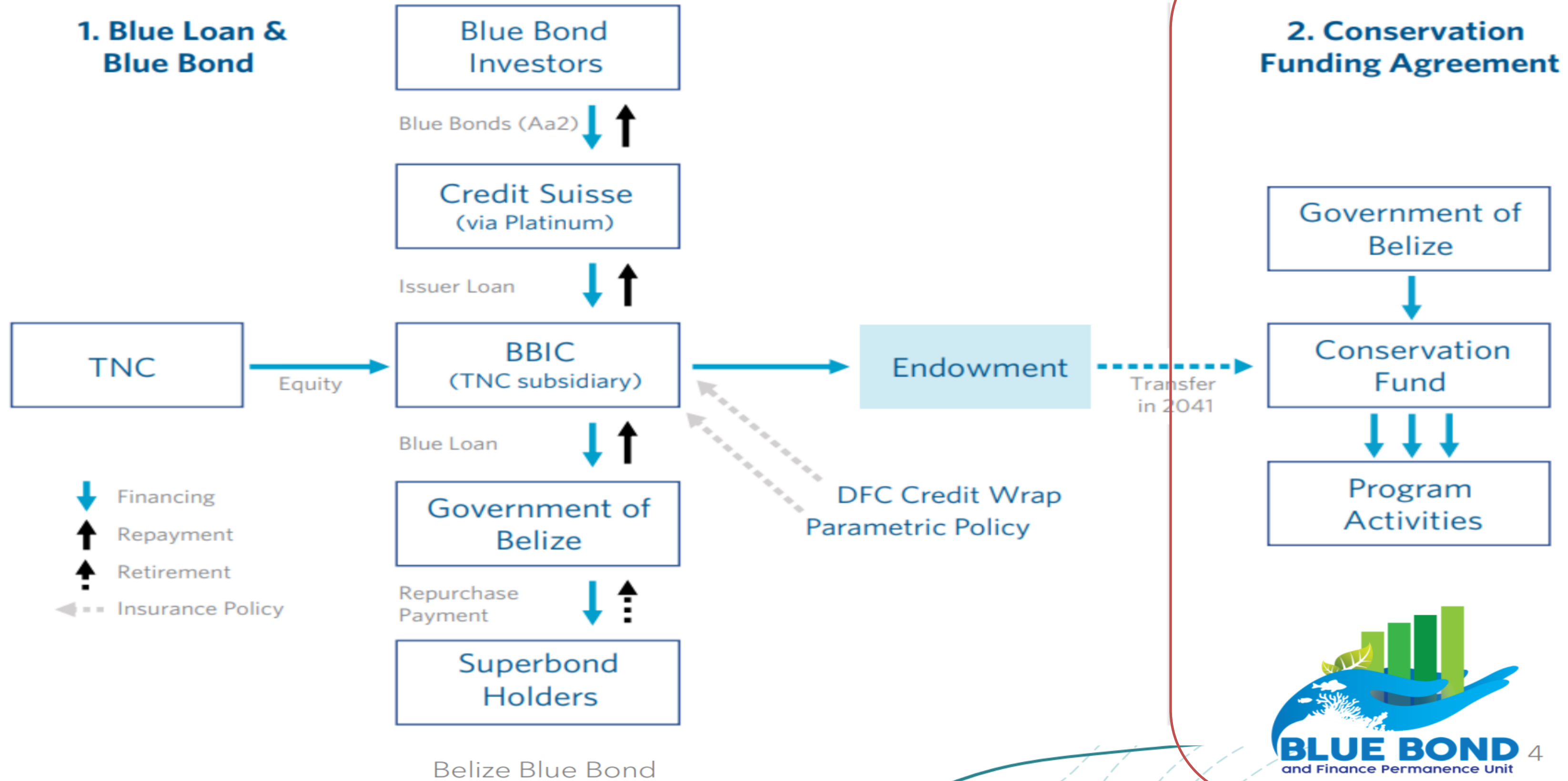
Mrs. Alicia Eck-Nunez

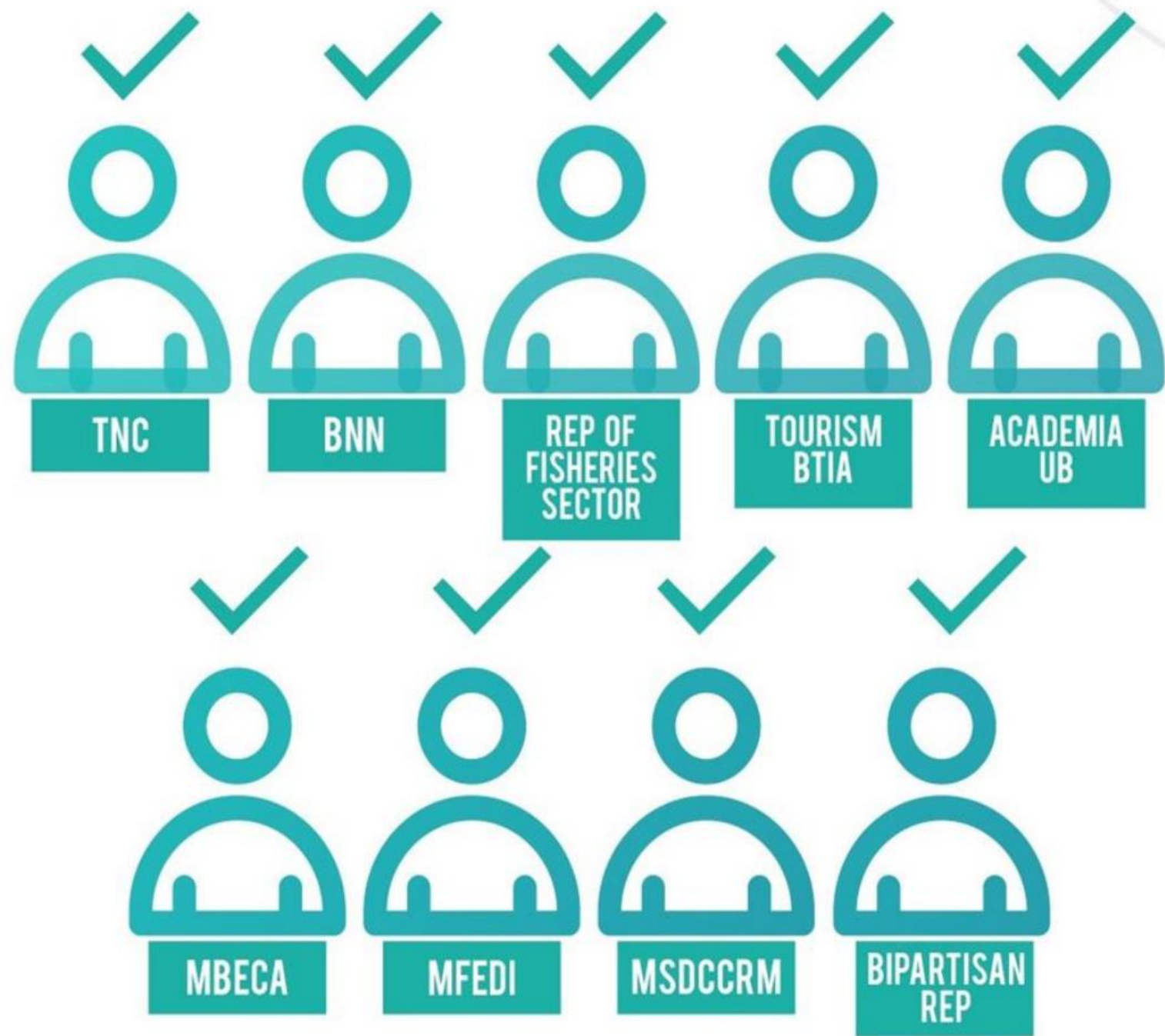


**Sustainable Fisheries
For Our Future**

PROCESS – AGREEMENT STRUCTURE

Belize Blue Loan/Blue Bond & Conservation Funding Agreement Structure





Belize Fund For A Sustainable Future

Objectives

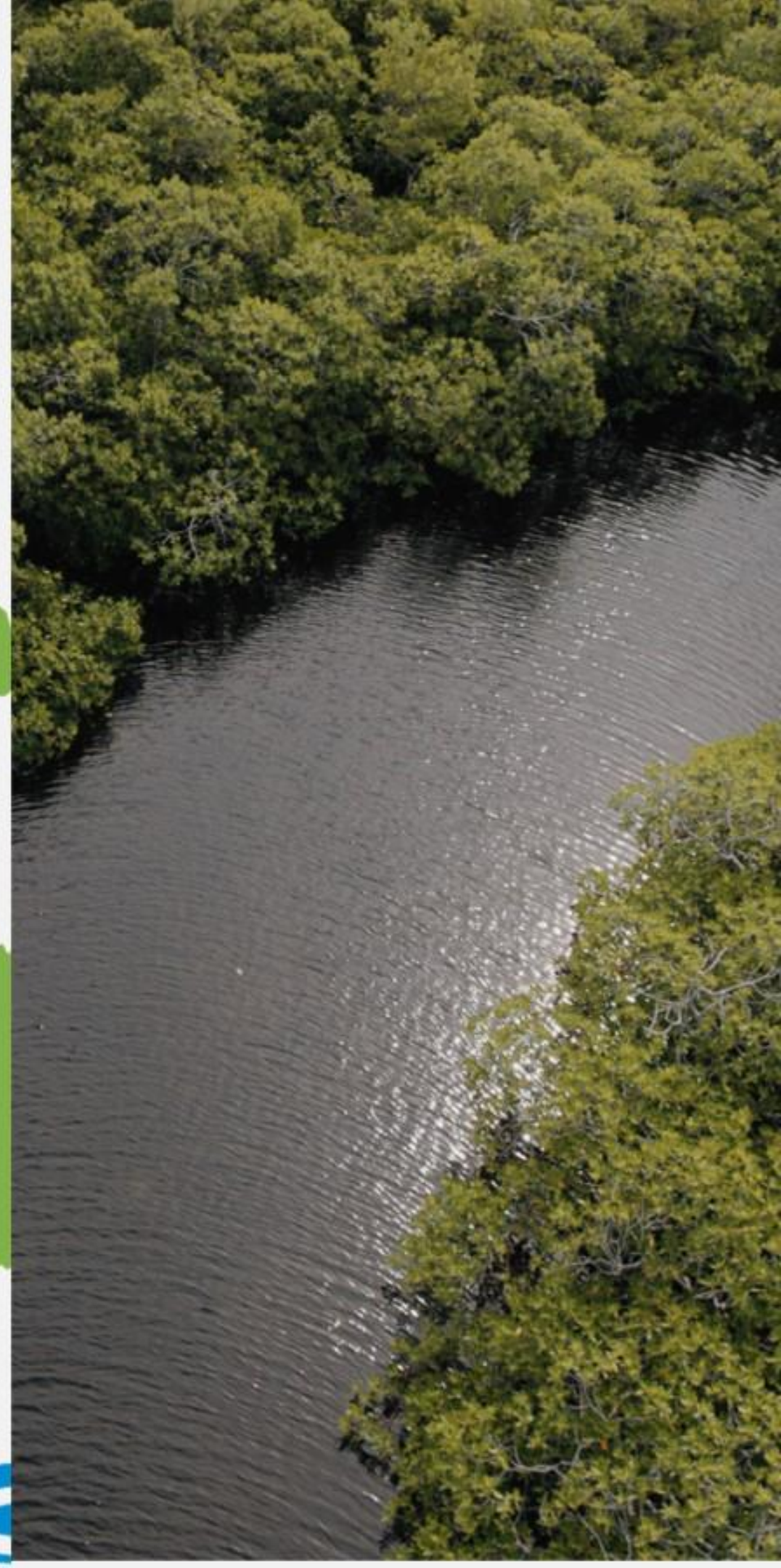
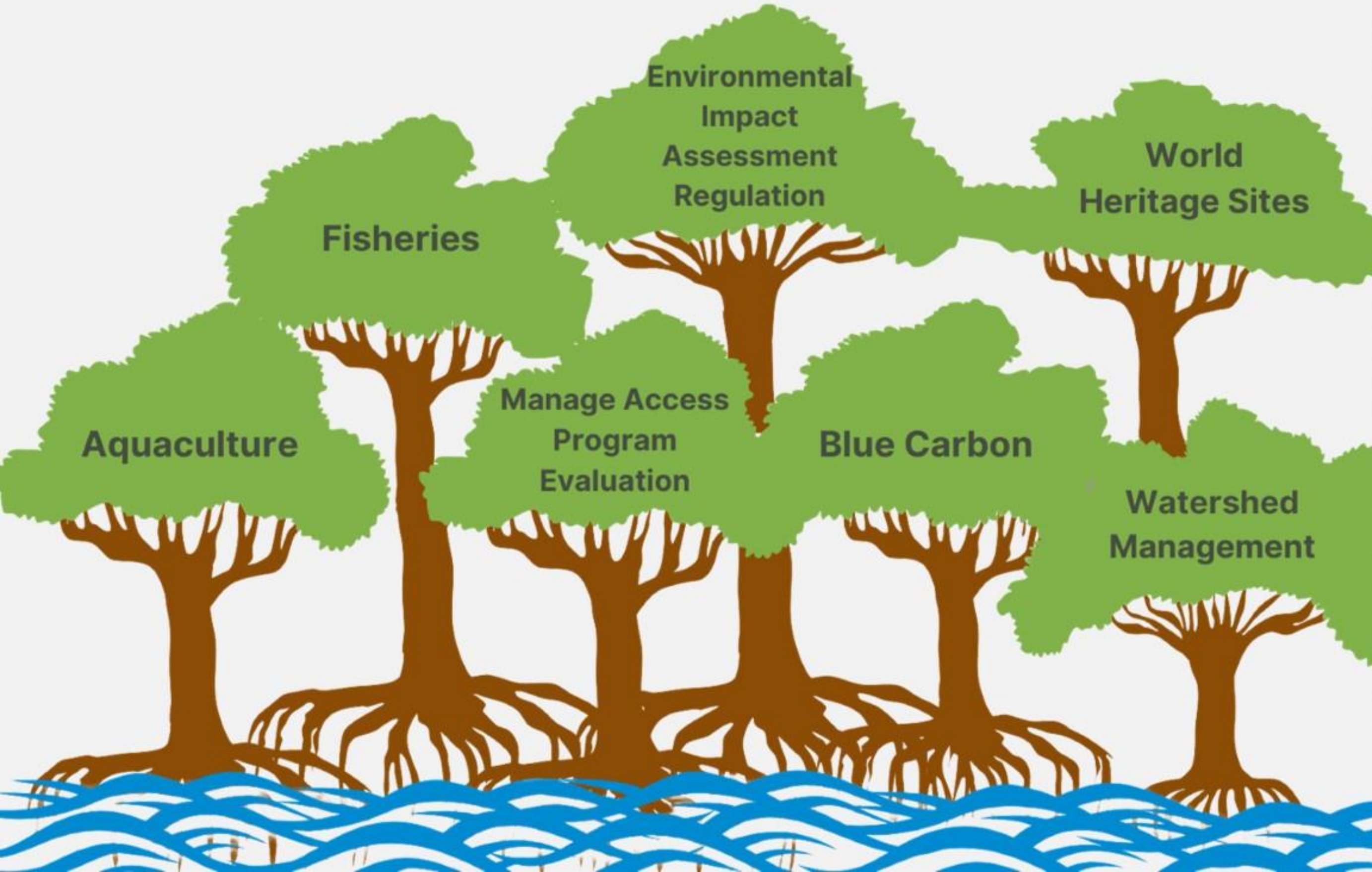
To provide grant funding and other forms of support for conservation and sustainable use of ocean resources in Belize.

To support the achievement of Belize's conservation commitment under the Blue Loan Agreement (Blue Bond)

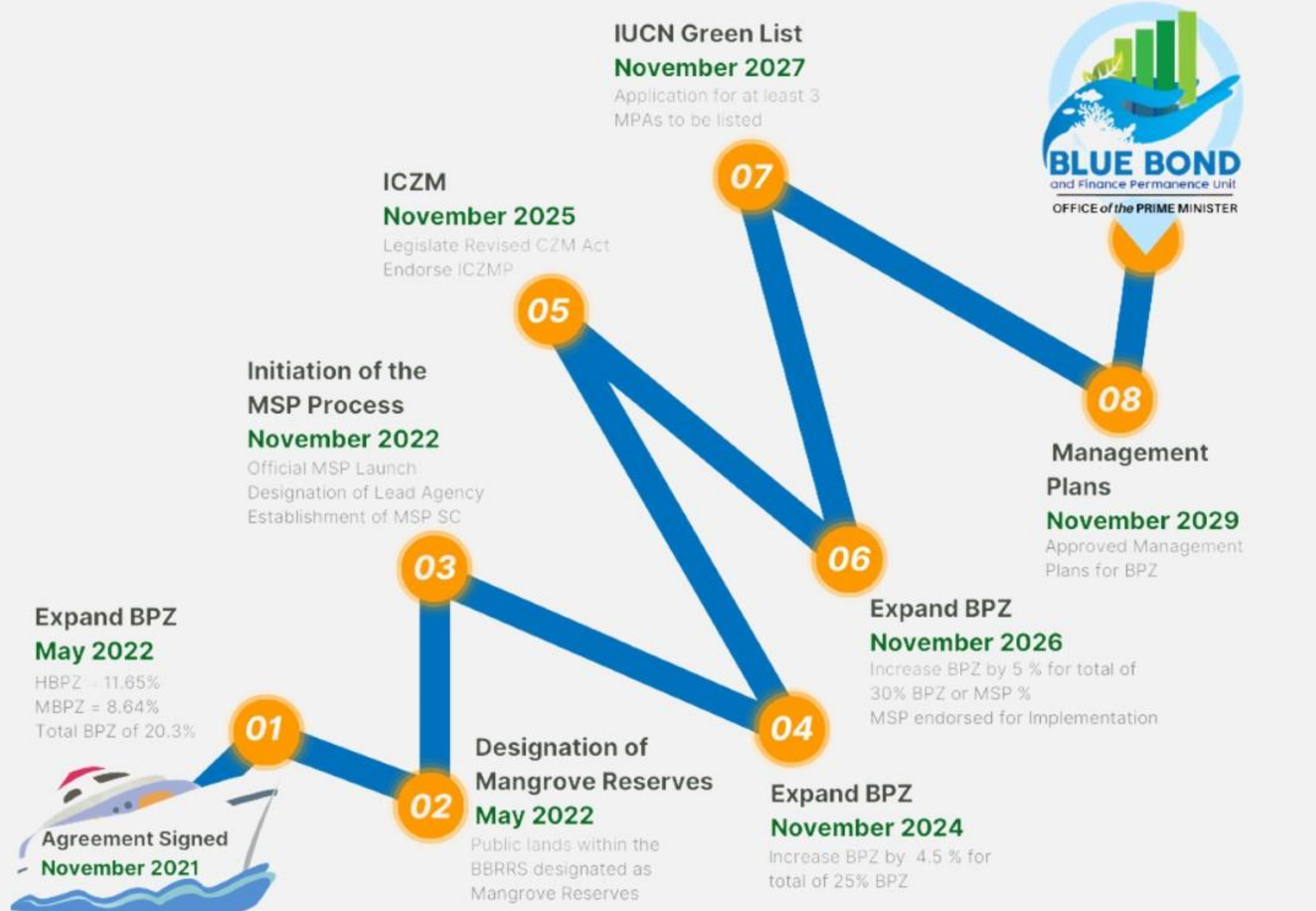
To contribute to the stewardship of a sustainable future for the people and environment of Belize

To ensure fiduciary responsibility and integrity in the administration of the BFSF's finances

Conservation Commitments



Conservation Milestones



Working Together

MILESTONE

4

No later than November 4th 2024: Expand Biodiversity Protection Zones to 25% of Belize's Ocean Space

MILESTONE

5

No later than November 4th 2025: Revised Coastal Zone Management Act and Integrated Coastal Zone Management Plan, inclusive of chapter on Biodiversity Offsets.

MILESTONE

6

No later than November 4th 2026: Expand Biodiversity Protection Zones to up to 30% of Belize's Ocean Space and completion of the MSP (Belize Sustainable Ocean Plan).

MILESTONE

8

No later than November 4th 2028: Development of management plans for BPZs.

CZMAI

Provide technical support for the identification of potential areas for Biodiversity Protection Zones (BPZs)

- GIS Support
- Identification of areas via the MSP process
- Compilation of Technical justifications for the use of space as a BPZ.

Belize Fisheries Department

Designation of the new BPZs

- Stakeholder engagement with relevant communities.
- Development and Ratification of S.I.
- Gazette process



PROGRESS

Deliver of Milestone 4:

Expand Biodiversity Protection Zones to
25% of Belize's Ocean Space

Background

Analyzing Existing Conditions



Identified areas of interests:

- Lighthouse Reef Atoll
- Placencia Lagoon
- Central Region (Goff's Caye Area)
- Cayman Crown (High)

Opportunities:

- EEZ – Banco Chinchorro (Transboundary MPA)
- Glover's Reef Atoll (S.I. 128)
- Extended Lighthouse Reef Atoll (S.I. 128)

Medium Biodiversity Protection

PROGRESS

Milestone 4: Lighthouse Reef Atoll

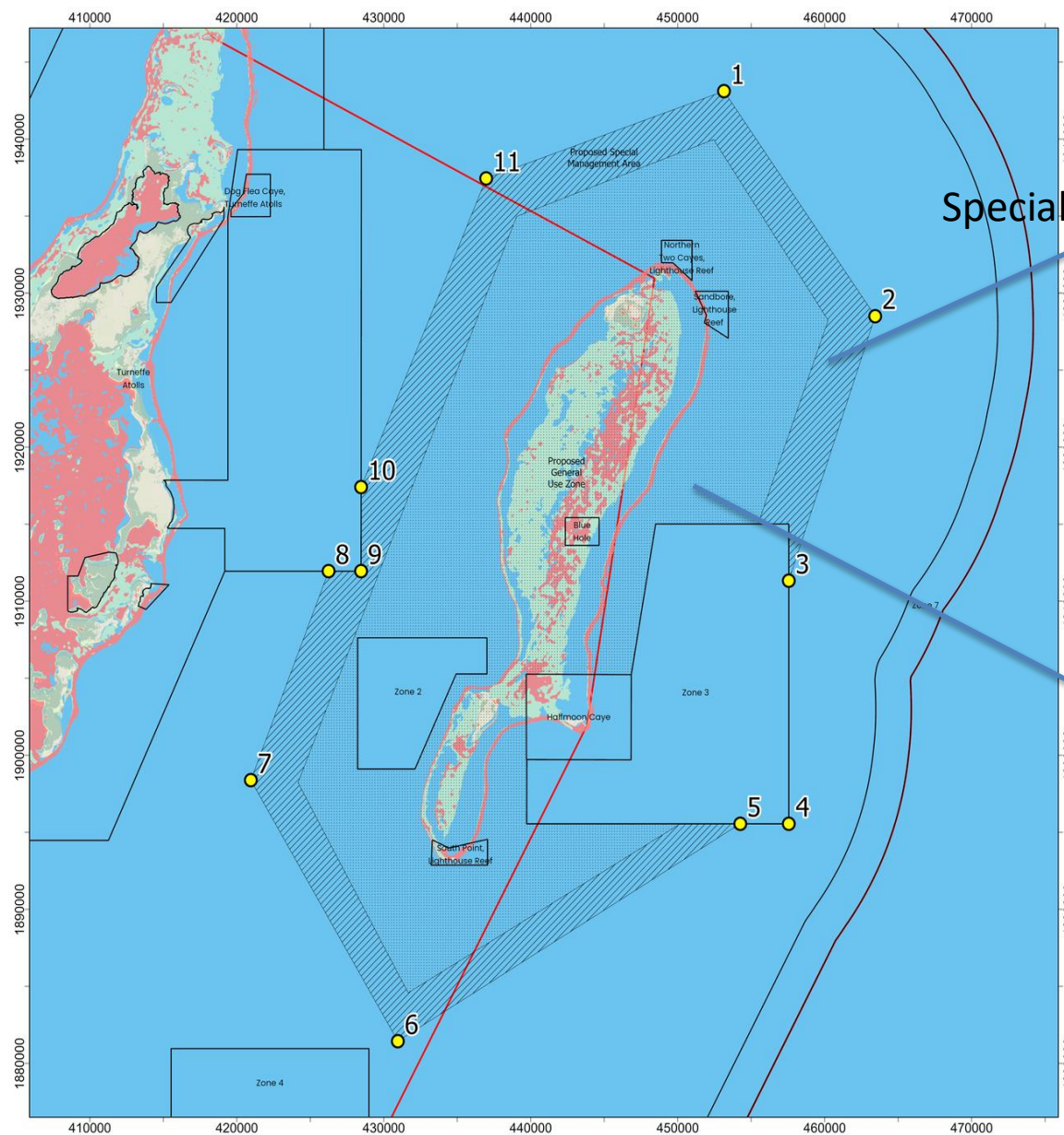
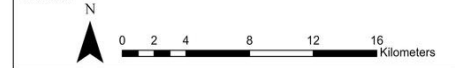
Lighthouse Atoll-(2miles Radius Atolls- SI No.128 of 2021)



Legend		
●	Lighthouse Boundary Points	
■	Belize Maritime Areas	
□	Existing Marine Protected Areas	
■	Mangrove	
■	Coral Cover	
■	Sargassum Cover	
□	Proposed General Use Zone	
□	Proposed Special Management Area	

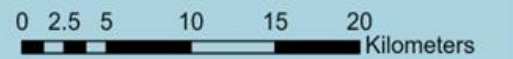
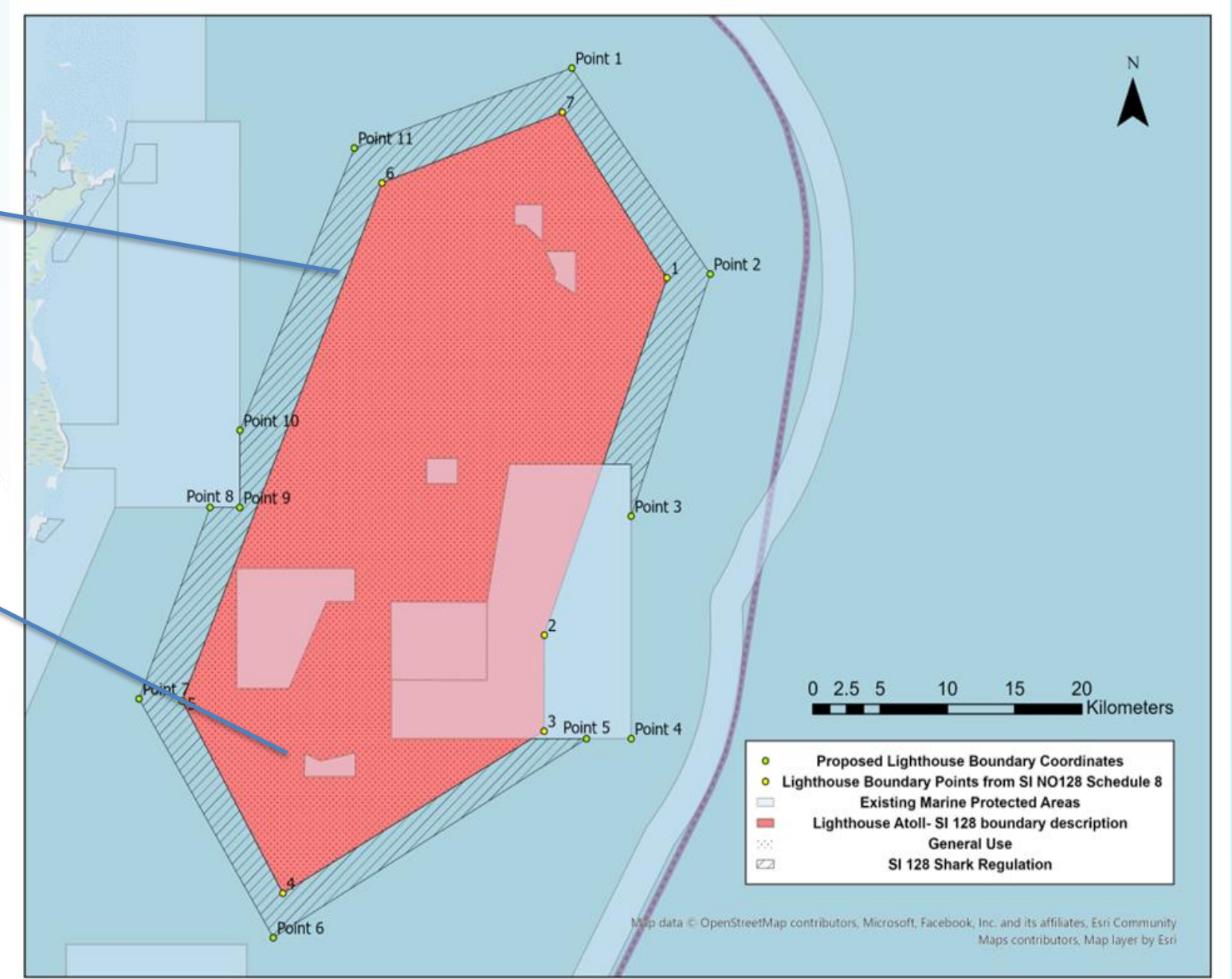
Point	Eastings	Northings
Point 1	453145	1943112
Point 2	463437	1928605
Point 3	457557	1911329
Point 4	457557	1895552
Point 5	454253	1895552
Point 6	430951	1881439
Point 7	420952	1898380
Point 8	426246	1911948
Point 9	428454	1911948
Point 10	428458	1917414
Point 11	436972	1937444

Boundary Descriptions
 Commencing at a Point 1, and having scaled UTM coordinates 453145 East 1943112 North; thence proceeding 17.87 km in a southerly direction to a Point 2, and having scaled UTM coordinates 463437 East 1928605 North; thence proceeding 18.15 km in a southerly direction to a Point 3, and having scaled UTM coordinates 457557 East 1911329 North; thence proceeding 15.78 km in a southerly direction to a Point 4, and having scaled UTM coordinates 457557 East 1895552 North; thence proceeding 3.30 km in a westerly direction to a Point 5, and having scaled UTM coordinates 454253 East 1895552 North; thence proceeding 27.24 km in a southerly direction to a Point 6, and having scaled UTM coordinates 430951 East 1881439 North; thence proceeding 19.67 km in a northerly direction to a Point 7, and having scaled UTM coordinates 420952 East 1898380 North; thence proceeding 14.56 km in a northerly direction to a Point 8, and having scaled UTM coordinates 426246 East 1911948 North; thence proceeding 2.21 km in an easterly direction to a Point 9, and having scaled UTM coordinates 428454 East 1911948 North; thence proceeding 5.47 km in a northerly direction to a Point 10, and having scaled UTM coordinates 428458 East 1917414 North; thence proceeding 21.76 km in a northerly direction to a Point 11, and having scaled UTM coordinates 436972 East 1937444 North; thence proceeding 17.14 km in a northerly direction to the Point of origin, and encompassing 1573.82 square kilometers.



Special Management Zone

General Use Zone



●	Proposed Lighthouse Boundary Coordinates
○	Lighthouse Boundary Points from SI NO128 Schedule 8
□	Existing Marine Protected Areas
■	Lighthouse Atoll- SI 128 boundary description
□	General Use
□	SI 128 Shark Regulation

Map data © OpenStreetMap contributors, Microsoft, Facebook, Inc. and its affiliates, Esri Community Maps contributors, Map layer by Esri

Lighthouse Reef Atoll Special Management Area	349.372 km ²	1.05 %
Lighthouse Reef Atoll General Use Zone	878.632 km ²	2.63 %



PROGRESS

Milestone 4: Glover's Reef Atoll

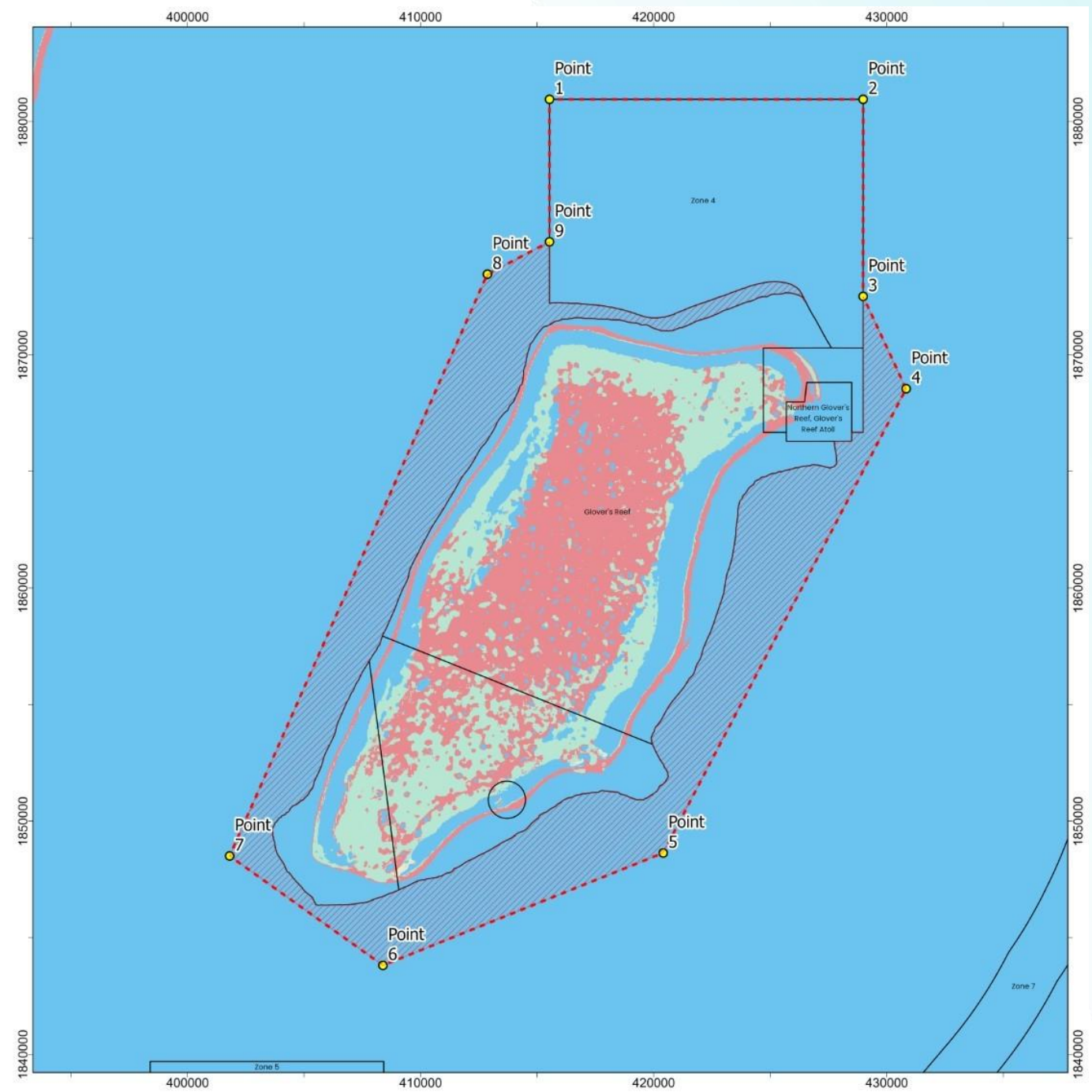
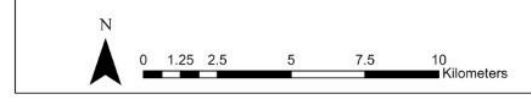
**Glovers-(2miles Radius Atolls-
SI No.128 of 2021)**



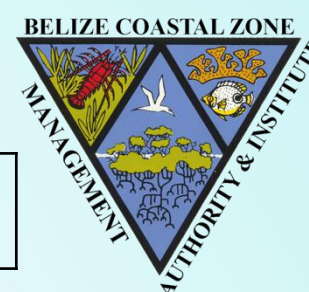
Legend	Point	Eastings	Northings
Existing MPAs	Point 1	415528.00000	1880957.00000
Mangrove	Point 2	428985.00000	1880957.00000
Coral Cover	Point 3	428983.41550	1872503.60700
Seagrass Cover	Point 4	430829.63720	1868544.38400
Glovers_Boundary	Point 5	420403.19720	1848634.47600
Glovers	Point 6	408380.86290	1843813.26800
Add Space	Point 7	401802.30330	1848504.41800
	Point 8	412861.03050	1873456.60600
	Point 9	415528.53430	1874846.43900

Boundary Descriptions

Commencing at a Point 1, and having scaled UTM coordinates 415528.00000 East 1880957.00000 North; thence proceeding 13.46 km in an easterly direction to a Point 2, and having scaled UTM coordinates 428985.00000 East 1880957.00000 North; thence proceeding 8.45km in a southerly direction to a Point 3, and having scaled UTM coordinates 428983.41550 East 1872503.60700 North; thence proceeding 4.37 km in a south easterly direction to a Point 4, and having scaled UTM coordinates 430829.63720 East 1868544.38400; thence proceeding 22.47 km in a south westerly direction to a Point 5, and having scaled UTM coordinates 420403.19720 East 1848634.47600; thence proceeding 12.95 km in a south westerly direction to a Point 6, and having scaled UTM coordinates 408380.86290 East 1843813.26800; thence proceeding 8.08 km in a north westerly direction to a Point 7, and having scaled UTM coordinates 401802.30330 East 1848504.41800; thence proceeding 27.29 km in a north easterly direction to a Point 8, and having scaled UTM coordinates 412861.03050 East 1873456.60600; thence proceeding 3.01 km in a north easterly direction to a Point 9, and having scaled UTM coordinates 415528.53430 East 1874846.43900; thence proceeding 6.11 km in a northerly direction to the Point of origin, and encompassing 621.760 square Kilometers.



Glover's Reef Atoll Special Management Zone	261.649 km ²	0.517 %
---	-------------------------	---------



PROGRESS

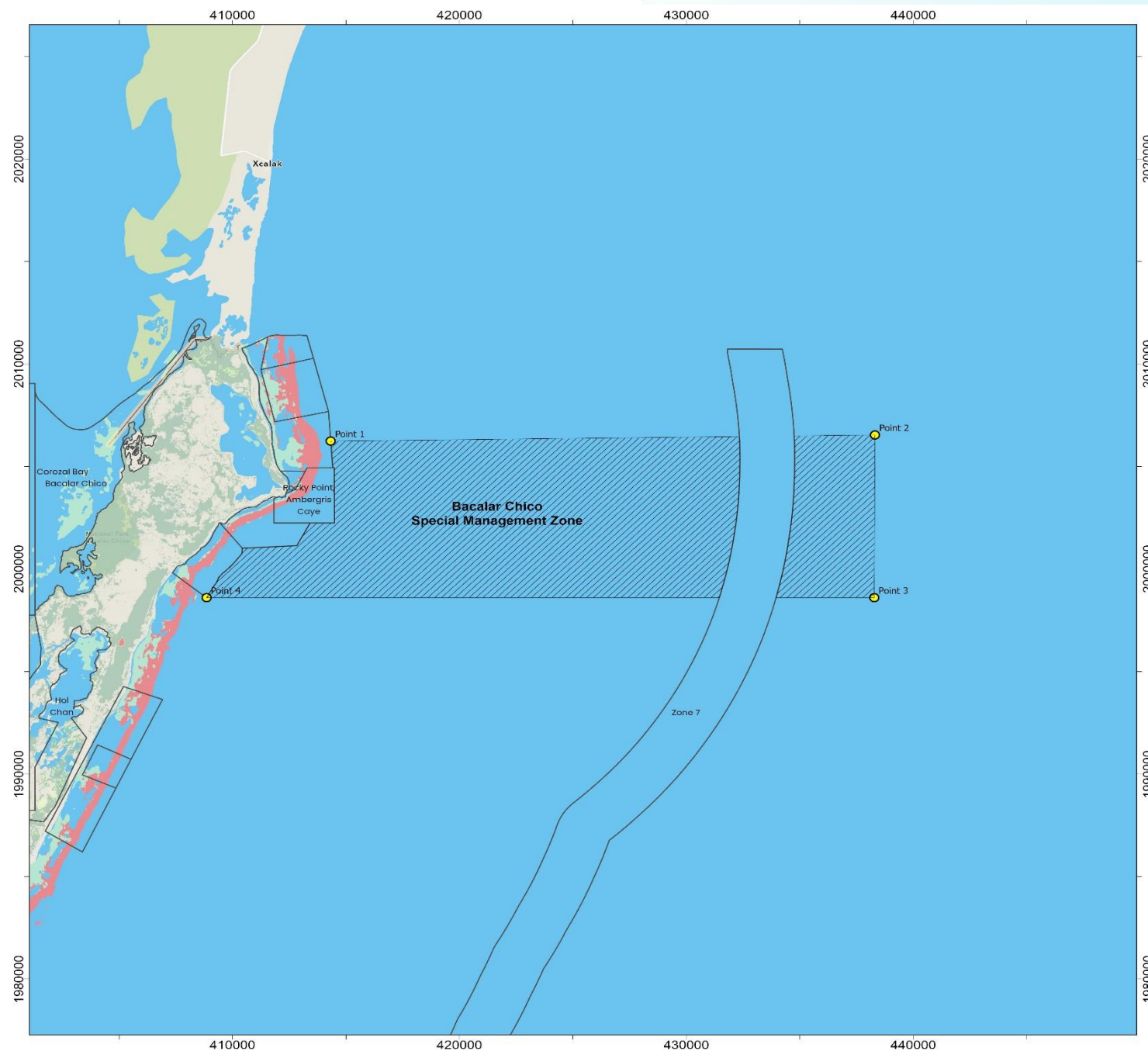
Milestone 4: Bacalar Chico Expansion

ANNEX IXd: Bacalar Chico Special Management Zone



Legend	Point	Eastings	Northings
Proposed Points	Point 1	414327.737029763	2006238.7876697
Bacalar Chico Special Management Zone	Point 2	438314.623474746	2006540.6629976
Existing Marine Protected Areas	Point 3	438280.724000003	1998599.0000000
Coral Cover	Point 4	408852.000000000	1998599.00000001
Seagrass Cover			
Mangrove			

Boundary Descriptions
 Commencing at a Point 1, and having scaled UTM coordinates 414327.737029763 East 2006238.7876697 North; thence proceeding 23.99 km in an easterly direction to a Point 2, and having scaled UTM coordinates 438314.623474746 East 2006540.6629976 North; thence proceeding 8.04 km in a southerly direction to a Point 3, and having scaled UTM coordinates 438280.724000003 East 1998599.0000000 North; thence proceeding 23.43km in a westerly direction to a Point 4, and having scaled UTM coordinates 408852.000000000 East 1998599.00000001; thence proceeding 11.64 km in a northerly direction along the borders of the Bacalar Chico Marine Reserve to the Point of origin, and encompassing 179,989 square Kilometers when excluding portions of marine protected area Zone 7.



Bacalar Chico Expansion	179.989 km ²	0.534 %
-------------------------	-------------------------	---------

PROGRESS

Areas Under Consideration

Areas Under Consideration		
Proposed Biodiversity Protection Zone	Area km2	%
Lighthouse Reef Atoll Special Management Area	349.372	1.05
Lighthouse Reef Atoll General Use Zone	878.632	2.63
Glover's Reef Atoll Special Management Zone	261.649	0.517
Bacalar Chico Expansion	179.989	0.534
Total	1669.64	5
Current Protection	6,690.46	20.05
Grand Total	8360.1	25.05
Remaining(km2)	1651.51	4.95

THANK YOU



Belize Fisheries Department

Alicia Eck-Nunez

Coordinator Ecosystems-based Management Unit

alicia.nunez@fisheries.gov.bz

Adriel Castaneda

Sr. Fisheries Officer

adriel.castaneda@fisheries.gov.bz



Coastal Zone Management Authority & Institute

“Leading the sustainable use and
planned development of Belize’s coastal zone”

Samir Rosado

MSP Process Lead

msplead@coastalzonebelize.org

Delwin Guevara

GIS Mapping and Spatial Analyst

msspatialanalyst@coastalzonebelize.org

Shari Gentle

Communication and Public Relations Officer

mssciencelead@coastalzonebelize.org

Janel McNab

MSP Coordinator

mppcoordinator@coastalzonebelize.org

Chad Bowman

MSP Science Lead

mppsciencelead@coastalzonebelize.org