



Integrated approaches to address implementation of the GBF and Paris Agreement

ICRI 2024 Annual Meeting, Jeddah



Carol Phua,
Global Coral Reef Rescue Initiative Leader (cphua@wwf.org.au) 
WWF International

www.coralreefrescueinitiative.org

OUR COMMUNITY

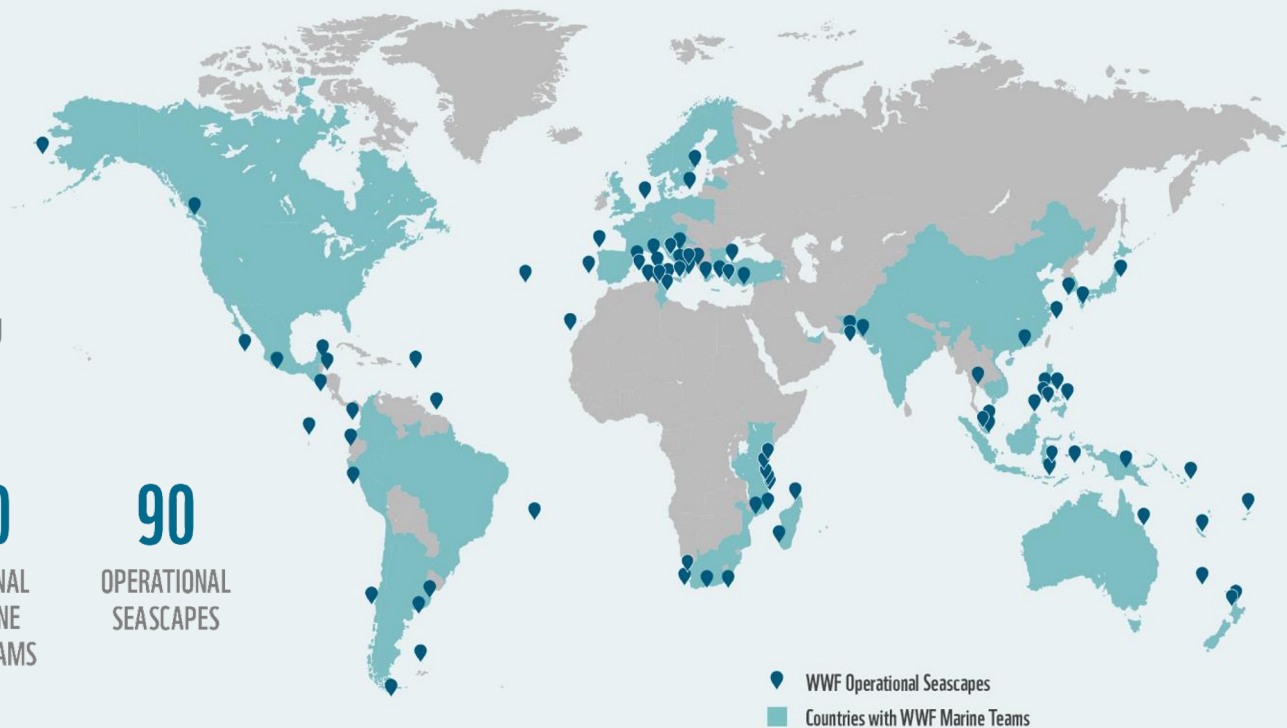
United by our passion for the ocean, the WWF Oceans Practice is a community of 550+ marine conservation experts working across 60 countries.

550+
MARINE
CONSERVATION
EXPERTS

60
NATIONAL
AND COUNTRY
OFFICES

10
REGIONAL
MARINE
PROGRAMS

90
OPERATIONAL
SEASCAPES



OUR VISION

**PRODUCTIVE AND RESILIENT OCEAN ECOSYSTEMS,
SUSTAINING PEOPLE AND NATURE.**



PATHWAYS TO CHANGE



COMMUNITY-LED CONSERVATION



GOVERNANCE AND POLICY



MARKETS AND PARTNERSHIPS



SUSTAINABLE OCEAN FINANCE

CONSERVATION THEMES



RESILIENT OCEAN HABITATS



SUSTAINABLE FISHERIES

OCEANS AND CLIMATE CHANGE



MARINE SPECIES CONSERVATION



REDUCING MARINE POLLUTION

TRACK RECORD

FROM TROPICAL CORAL REEFS TO POLAR SEAS, MARINE PROTECTED AND CONSERVED AREAS PROVIDE A VITAL SAFE HAVEN FOR MARINE LIFE, ENHANCING FISHERIES RESILIENCE AND SUSTAINING LOCAL LIVELIHOODS.

OVER FIVE YEARS,
WWF WORKED WITH PARTNERS AND
POLICYMAKERS TO SECURE:

153

NEW MARINE
PROTECTED AREAS

672
MILLION

HECTARES OF NEW MARINE
PROTECTED AREAS

274
MILLION

HECTARES UNDER
IMPROVED MANAGEMENT

OUR APPROACH

1. MOBILIZING FINANCE FOR OCEAN CONSERVATION
2. DIRECTING INVESTMENT AWAY FROM HARMFUL ACTIVITIES

80+

INTERNATIONAL FINANCE
INSTITUTION MEMBERS OF
THE SUSTAINABLE BLUE ECONOMY
FINANCE INITIATIVE



\$11 TRILLION

IN ASSETS UNDER
MANAGEMENT BY MEMBERS
OF SUSTAINABLE BLUE
ECONOMY FINANCE
INITIATIVE



\$20 BILLION

COMMITTED BY MULTILATERAL
DEVELOPMENT BANKS
TO ADVANCE A SUSTAINABLE
BLUE ECONOMY



CORAL REEF RESCUE INITIATIVE

RESILIENT REEFS · RESILIENT COMMUNITIES



90%

HALF OF ALL
TROPICAL REEFS HAVE
BEEN LOST IN THE
LAST CENTURY. WE ARE ON
COURSE TO LOSE UP
TO 90% BY 2050.

IF WE DON'T
ACT NOW, WE WILL
SEE CORAL REEFS
DISAPPEAR IN
OUR LIFETIME.

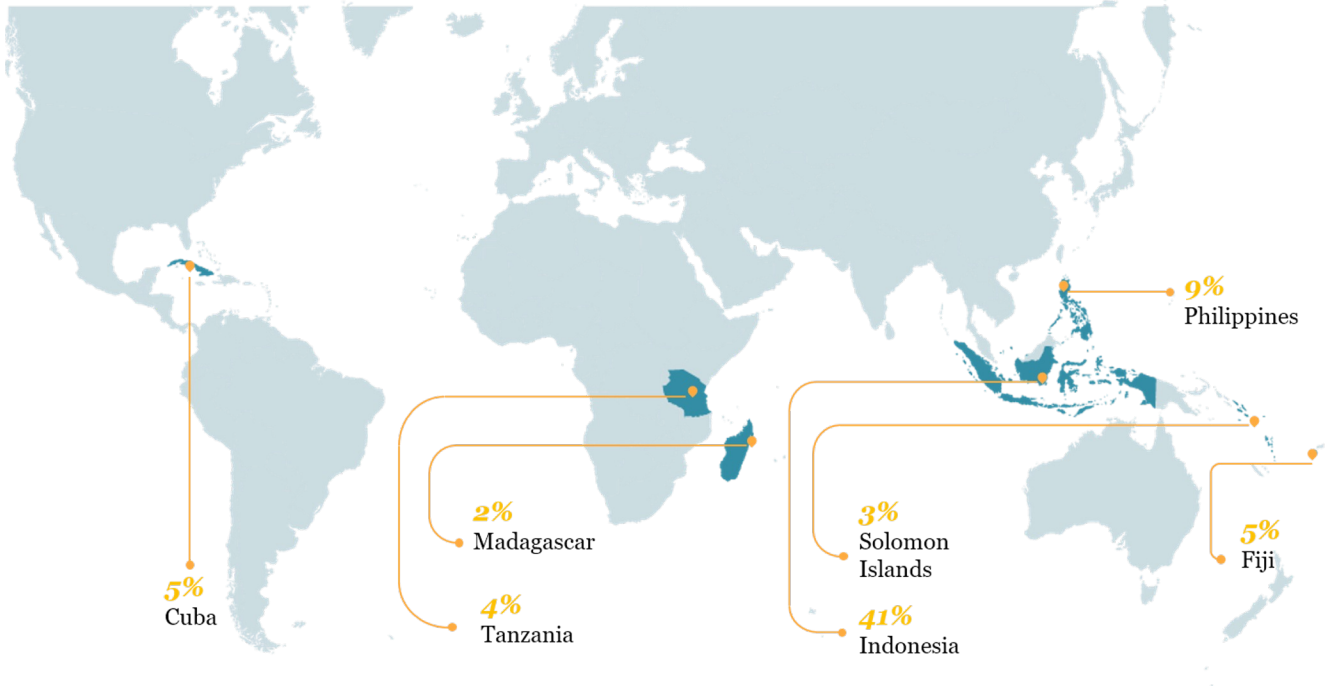
70%

SCIENTIFIC
ANALYSIS HAS FOUND
THAT 70% OF CLIMATE
RESILIENT CORAL REEFS
ARE FOUND IN 7
COUNTRIES.



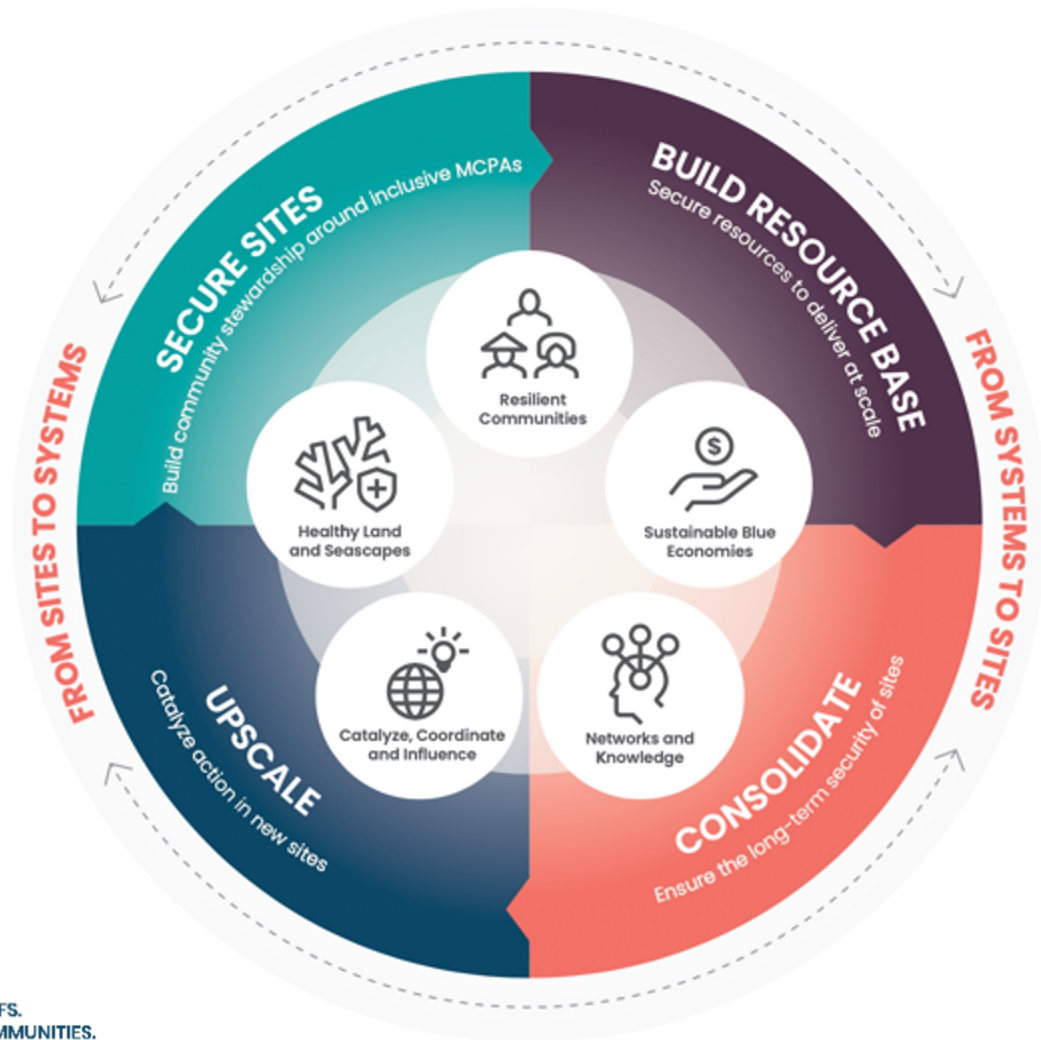
THE CORAL REEF
RESCUE INITIATIVE DELIVERS
TARGETED ACTION
TO REDUCE LOCAL THREATS
TO CLIMATE RESILIENT
REEFS, ENHANCING
THEIR LIKELIHOOD
OF SURVIVAL.

THE CORAL REEF RESCUE INITIATIVE INVOLVES A UNIQUE NATIONAL AND NGO PARTNERSHIP AIMED AT TARGETING THE LEAST EXPOSED TO CLIMATE CHANGE CORAL REEFS





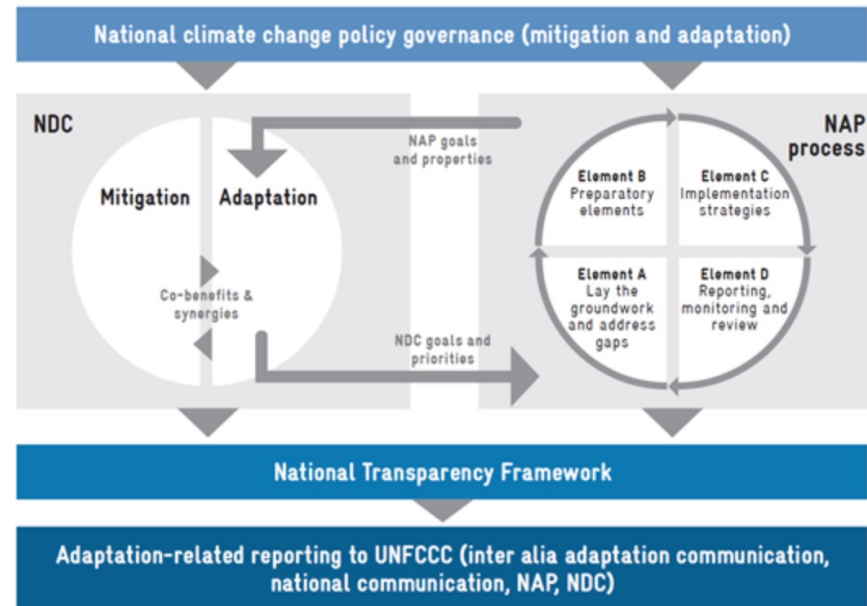
CRRRI Global Partners





RESILIENT REEFS.
RESILIENT COMMUNITIES.

Convention	 United Nations Framework Convention on Climate Change	 Convention on Biological Diversity
Framework	Paris Agreement	Global Biodiversity Framework (GBF)
National Strategies	Nationally Determined Contributions (NDCs)	National Biodiversity Strategy and Action Plan (NBSAPs)



RESILIENT REEFS.
RESILIENT COMMUNITIES.



BREAKING SILOS

Enhancing synergies across NDCs and NBSAPs

December 2023

Guidance for developing, implementing and monitoring national strategies

The UNFCCC and CBD both issue guidelines for countries to use when developing, implementing, and monitoring their national climate and biodiversity plans.

Harmonizing and amending these requirements in order to guide countries to more synergistic national climate and biodiversity plans is a key entry point.



Global processes for taking stock of climate and biodiversity action

International, collaborative processes to take stock of global climate and biodiversity progress – The Global Stocktake of the Paris Agreement and the Global Review of the GBF – present important opportunities for countries to integrate their results into their NDCs and NBSAPs.



National policy planning and development

Coordinating national climate and biodiversity commitments provides an opportunity to align ambition towards nature-positive targets.

Policy planning processes that work together – not in siloes – can help ensure that climate and biodiversity strategies are mutually reinforcing.



Areas for potential synergies in developing, implementing & Monitoring NDCs & NBSAPs

Potential Catalysts for synergies

Public-private initiatives assist countries in developing, implementing, and tracking their climate and biodiversity goals.



Defining targets and measures

Integrating policy measures such as Nature-based Solutions that hold significant climate mitigation, adaptation, and biodiversity potential in NDCs and NBSAPs is important for meeting these national goals.

However, it is important to carefully assess benefits and risks of such policy measures and develop strategies to address trade-offs.



Implementing and monitoring national plans

When financial resources and capacities are coordinated through multistakeholder mechanisms at the national and subnational levels across NDC and NBSAP development and implementation, resources can be fairly and efficiently allocated.



National Hub for Coral Reefs

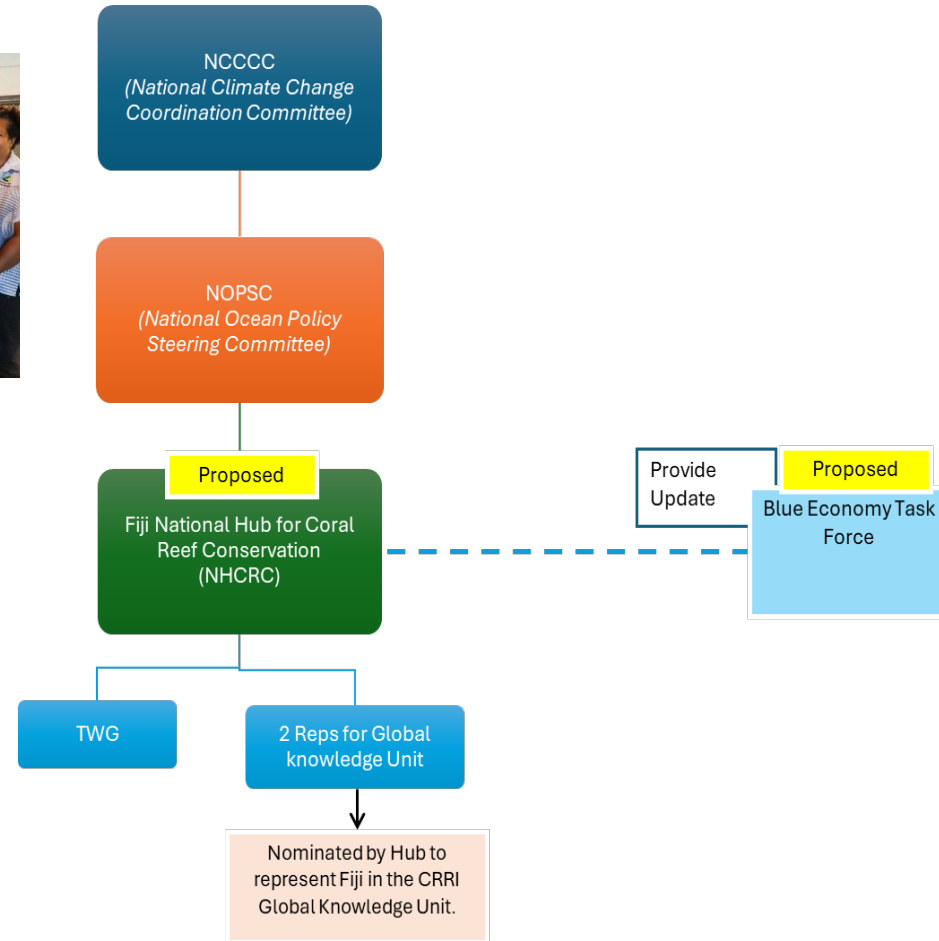


In June we launched of the Fiji National Hub for Coral Reef Conservation by the Permanent Secretary for Ministry of Environment & Climate Change by Dr. [Sivendra Michael](#). Through the support of the GEF7 Coral Reef Rescue Programme under the [Coral Reef Rescue Initiative](#), 5 other hubs are being set up across the priority countries.

One the main areas of work for the Hub will be updating the NBSAP and National Adaptation plan to ensure an integrated approaches for climate and coral reef conservation is applied by this interministerial, local community and civil society represented group, blended finance and reef positive business/ investment development, capacity building and learning, etc.

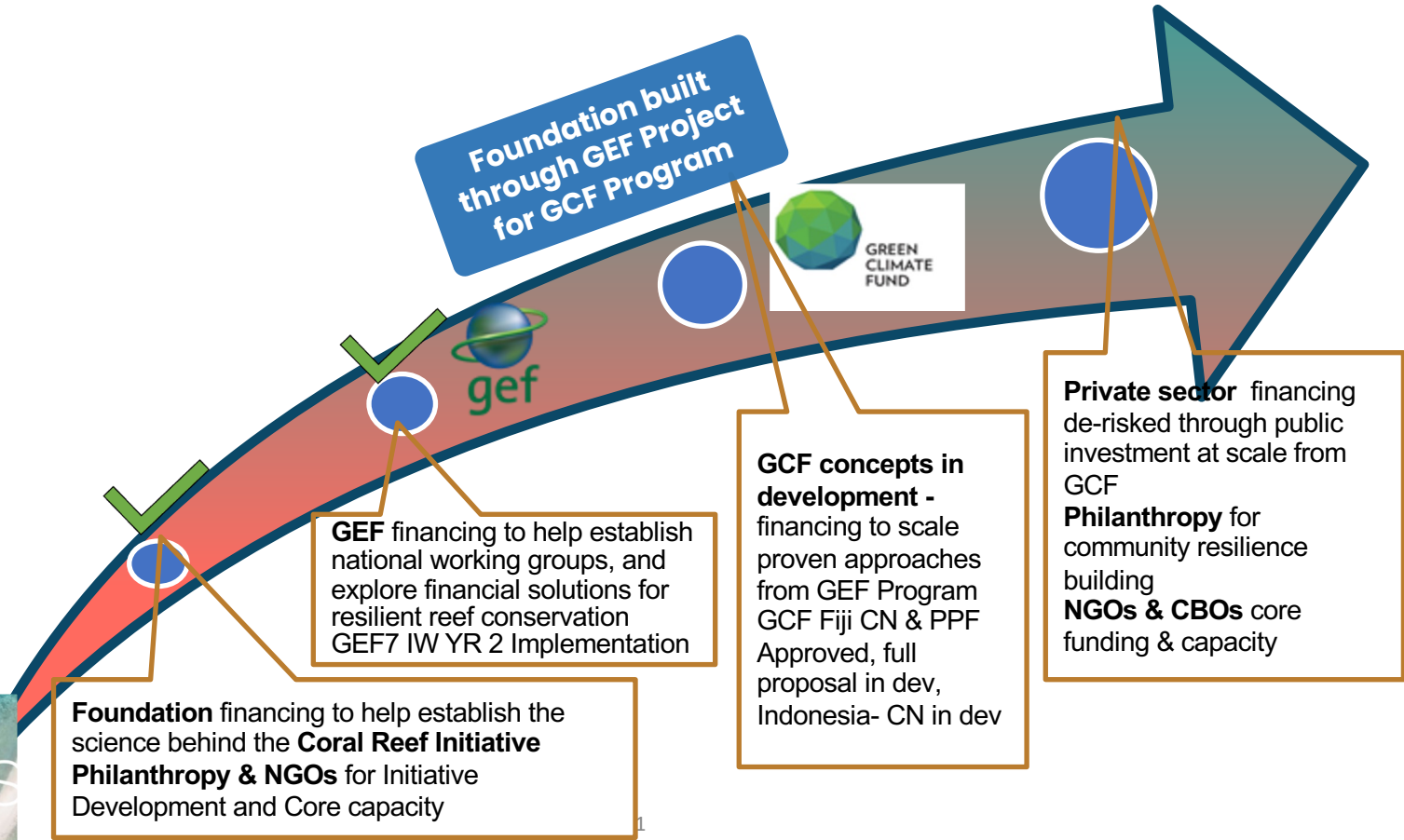


Structure of the Fiji National Hub for Coral Reef Conservation



WWF Coral Reef Rescue Initiative

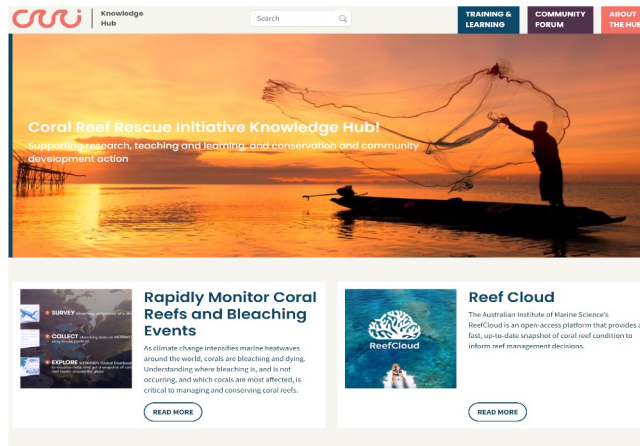
Coordinated Approach with GEF & GCF



CRRRI Platforms

CRRRI Website

- [Coral Reef Crisis](#)
- [About Us](#)
- [Resources](#)
- [News and Updates](#)
- [Knowledge Hub](#)



Launch of Bahasa Indonesia Online training course

The edX Coral Reef: Introduction to Challenges and Solutions' online course, was originally launched in November 2023 and has already reached more than 700 people across 88 countries.

Created by UQ and supported by CRRRI and the [Global Environment Facility](#), the integrated translation of the course is the first of its kind on the edX platform. The translated course in Bahasa Indonesia, provides millions more people access to valuable educational resources on coral reefs.

<https://www.edx.org/learn/ecosystems/the-university-of-queensland-coral-reefs-introduction-to-challenges-and-solutions>

English Bahasa Indonesia

Terumbu Karang Tropis

Terumbu karang tropis berada pada wilayah perairan yang lebih hangat di mana suhu rata-rata dalam setahun tidak pernah kurang dari 18°C. Spesies karang pembentuk terumbu (kalsifikasi) yang menghuni terumbu karang diketahui dapat bertumbuh dengan baik pada kondisi air laut dengan suhu yang relatif tinggi, mendapatkan sumber Cahaya yang cukup, dan bersifat alkali atau basa. Terumbu karang tropis adalah terumbu di perairan dangkal yang dapat ditemukan di kedalaman laut antara 0-30m di mana sinar matahari masih terlihat. Dalam hal ini, sinar matahari berperan sebagai sumber energi untuk proses **fotosintesis**, di mana mikroalga yang **bersimbiosis** dengan karang mengubah energi Cahaya tersebut menjadi sumber makanan bagi karang-karang penghuni terumbu.

Sumber gambar: Karang menyediakan tempat perlindungan yang aman bagi kehidupan laut. Professor Ove Hoegh-Guldberg, UQ.





Coral Reef Rescue Initiative

Coordination Team



Carol Phua

Coral Reef Rescue Initiative
Leader
cphua@wwf.org.au



Aya Mizamura

CRRRI Public Sector
Partnership Specialist
amizamura@wwf.org.au



Magali Rochat

CRRRI Coordinator
cgu@wwf.org.au



Larissa Sherman

Partnership Outreach &
Communications
Manager
lsheerman@wwf.org.au



Globally-significant climate-resilient coral reefs (at least 500km²) are safeguarded to ensure their survival and that of associated ecosystems, including their contribution to coastal resilience, livelihoods, and sustainable economies.

Country and Regional Focal Points



Margaret Vakalalabure
Pacific Regional
Coordinator (Fiji)

mvakalalabure@wwfpacific.org



Shannon Seeto
Solomon Islands

sseeto@wwfpacific.org



Luz Teresa Baskinas
Philippines

lbaskinas@wwf.ph.org



Domoina Rakotomalala
Madagascar

drakotomalala@wwf.mg



Dr. Patricia Gonzales
Cuba

patrig75@yahoo.es



Eduardo Videira
South West Indian Ocean

evideira@wwf.org.mz



Atrasina Adlina
Indonesia

aadlina@wwf.id



Coral Reef
Rescue Initiative

Thank you

