



FISH FOREVER

rare

# Embracing The ICRI Call to Action Though Community-led Conservation

Dr. Anthony Chatwin | September 10, 2024





MISSION:

**Inspire change so people  
and nature thrive.**

# What: Our key priorities



**Biodiversity**



**Climate**



**People & Livelihoods**

# How: Accelerating community-led conservation

Hombang Island  
Sinug-ang  
Bugatosa Island

Sekreto nalang ug report ang Illegal Fishing

Ning-apil Naku Uban ta!

Ginadili ang pagpanagat   Ginadili ang pagpanguha ug kinhason   Seaborn Hotline: 09176311963

MUNICIPALITY OF INABANGA   NING-APIL NAKU UBAN TA!   RARE giz ACC   Ang pag-amping ug pagdumala sa atong Sanktuaryo trabaho sa matag Lungsoanon; buhata alang sa Lungso ug sa imong Pamilya





**Fish Forever**



**Lands for Life**



**Innovative Finance**



**Center for Behavior & the Environment**



**Climate Culture**

# Fish Forever

A world map with several countries highlighted in green. Lines connect these countries to photographs of local fishing activities. The countries and their corresponding images are: Honduras (a person holding a fish), Guatemala (a person in a boat), Brazil (a boat with people), Mozambique (a person with a net), Philippines (a person on a beach), Palau (a person spearfishing), Federated States of Micronesia (a group of people sitting on a mat), and Indonesia (a woman with a tray of food).

**Honduras**

**Guatemala**

**Brazil**

**Mozambique**

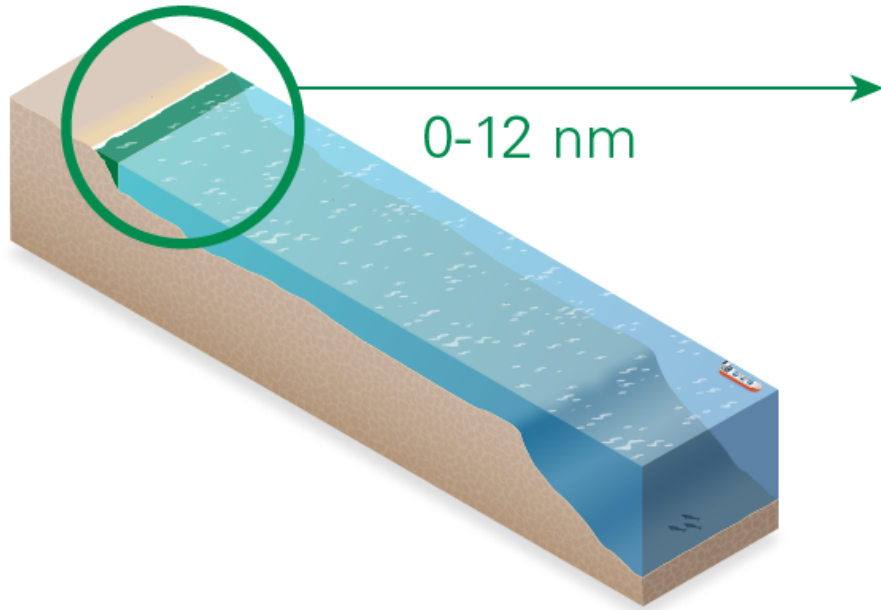
**Philippines**

**Palau**

**Federated States of Micronesia**

**Indonesia**

# Why the territorial seas?



6%  
of the ocean

70%  
of biodiversity



83% of the world's  
coral reefs



100% of mangroves



100% of seagrass



< 10% of ocean  
philanthropy

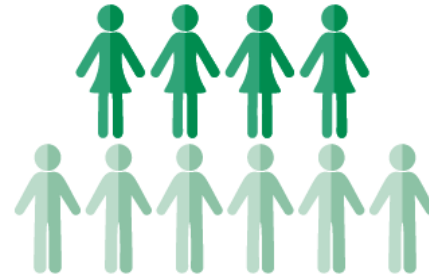
# Potential for impact



**113 million**  
people worldwide



**40%**  
global fish catch



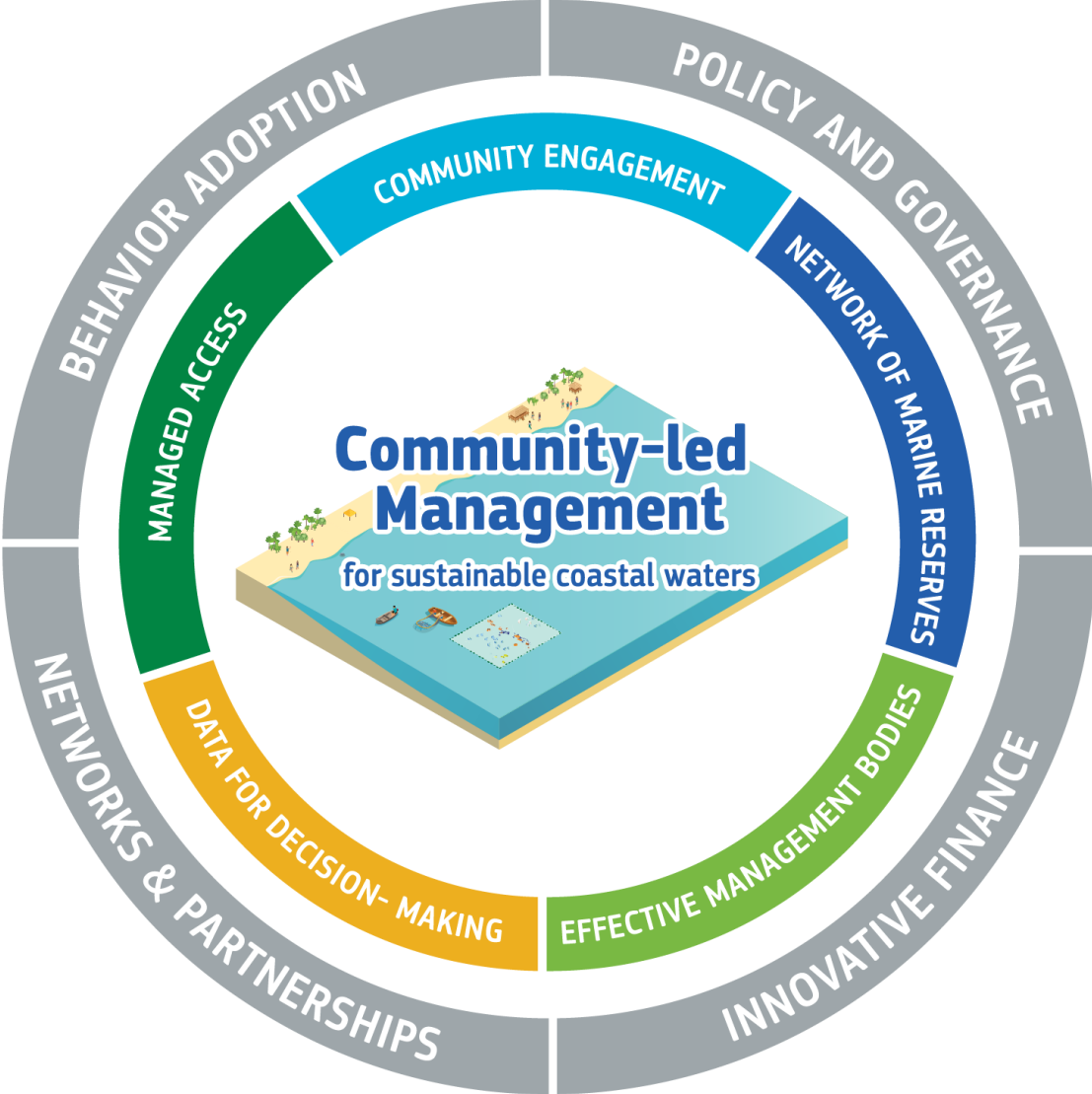
**40%**  
women



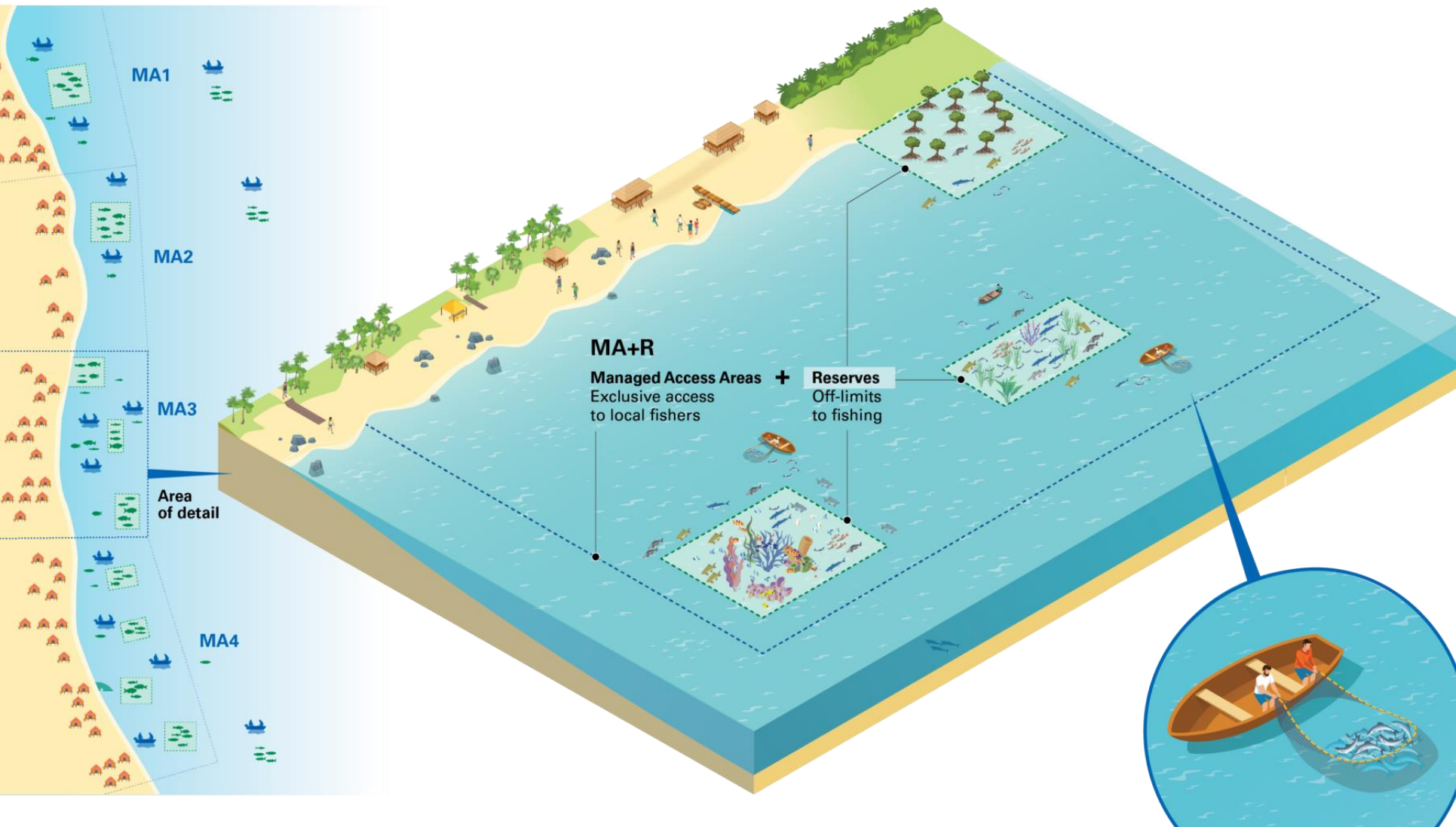
**1.4 billion**  
people by 2060



# The Fish Forever approach



# Rare's solution: Managed access with reserves (MA+R)



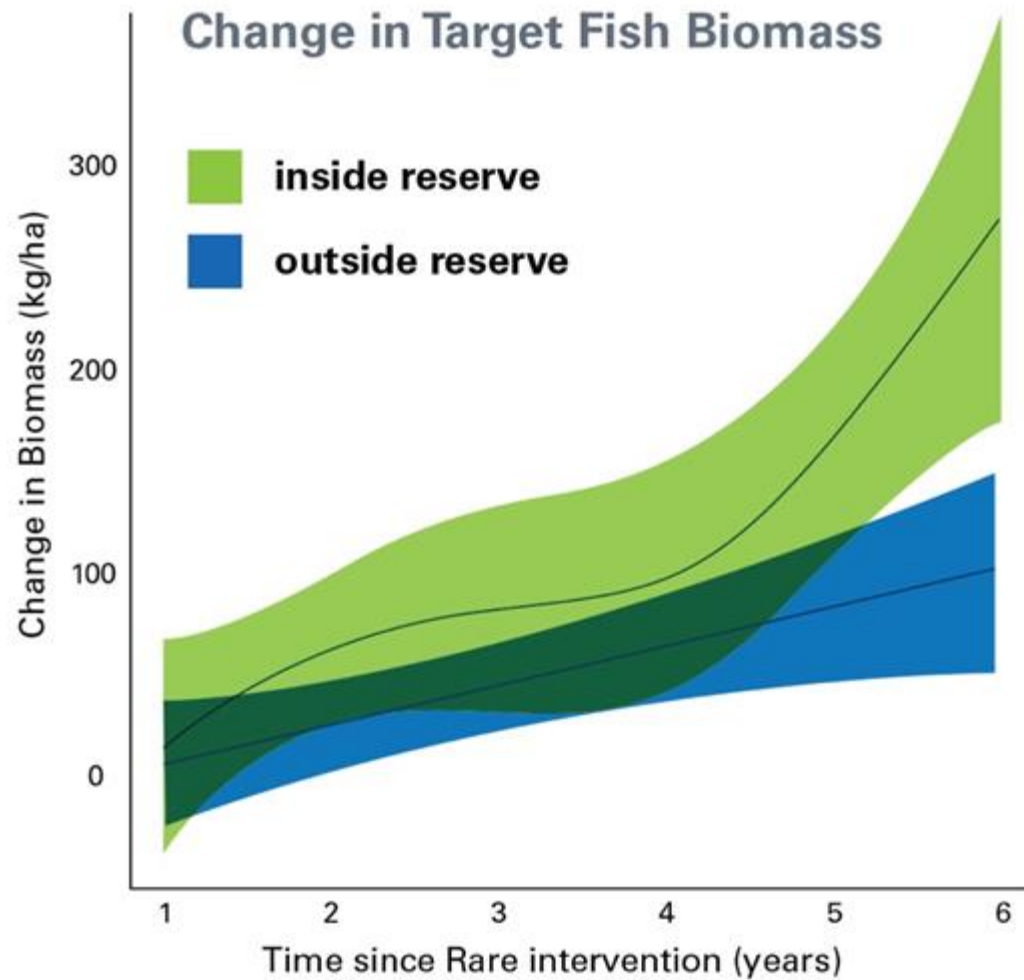
## Managed Access for Sustainable Use.

Areas of water mapped, legally established, and **sustainably managed** cooperatively between local government and local fishers, who enjoy exclusive rights to fish in the area.

## Reserves for Protection of Critical Habitat.

Areas within or adjacent to the Managed Access area where fishing is off limits to **protect critical habitat** and so that fish populations can regenerate to spill over into the fishing grounds.

# Promising results



# Rare looks forward becoming an active member of ICRI, sharing with and learning from network members.

We embrace the ICRI Continued Call To Action

1. There is strong alignment between the Rare Fish Forever Approach and the **ICRI Integrated Management**, especially in the recognition of the land-sea connections of the coral ecosystem.
2. Rare's focus on **building the capacity** of coastal communities to manage all facets of marine conservation and sustainable use of coral reefs and related ecosystems;
3. **Science and Monitoring** are deeply embedded in the Rare approach. Working with partners and coastal community we engage in extensive data collection and analysis and are committed to sharing information back with communities and partners to support for decision making at all levels.
4. Rare regularly **reviews** the impact of actions taken and assesses management effectiveness to support adaptive management of the Fish Forever program to improve the delivery of community-based conservation.





 **FISH FOREVER**



**FISH FOREVER**

