

ICRI Secretariat Virtual Handover Event

“Status and Trends of Coral Reefs of the Pacific: 1980-2023” GCRMN report

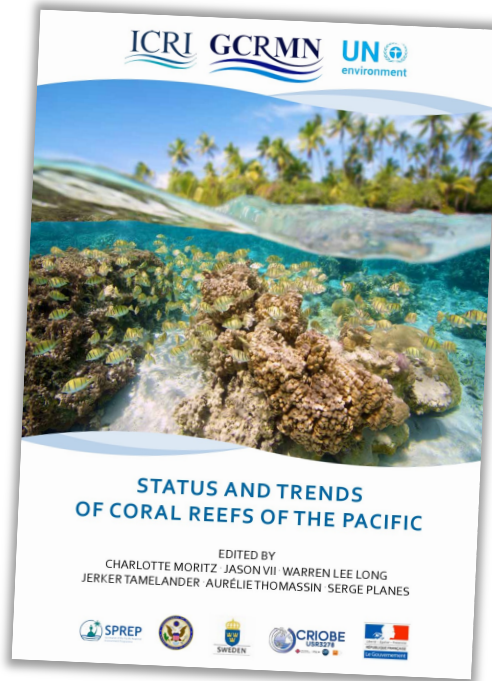
Jérémy Wicquart, Ph. D.



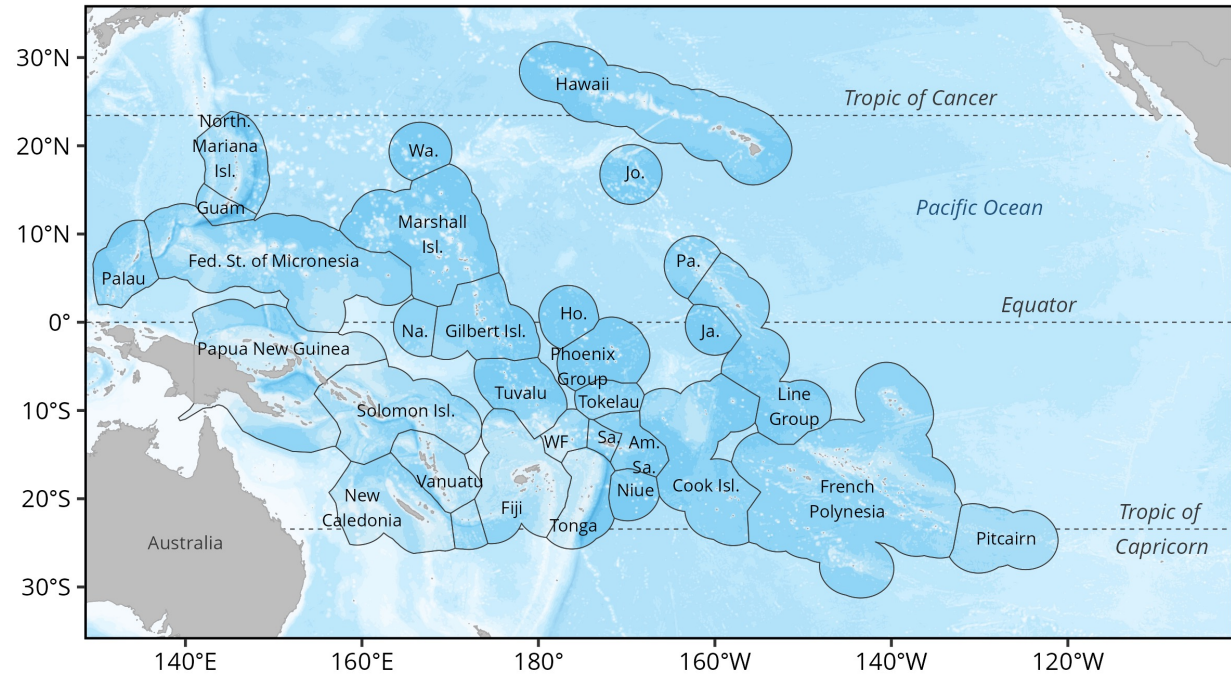
1

A new Pacific report

- Previous Pacific report was published in 2018, with latest data from 2016




- Work undertaken in 2023
- Edited by J r my Wicquart, Erica K. Towle, Tom Dallison, Serge Planes



2

Structure of the report

- Acknowledgments
- Executive Summary
- Introduction
- Part 1 - Synthesis for the Pacific region
- Part 2 - Syntheses for countries and territories
 - 23 chapters
- Materials and Methods
- Authors' contributions
- Supplementary Materials
- Bibliography

 7 case-studies, included 4 from SocMon

3

Indicators reported



Benthic cover

Hard coral • Macroalgae • Turf algae • Coralline algae



Human population

Within 20 km from coral reefs



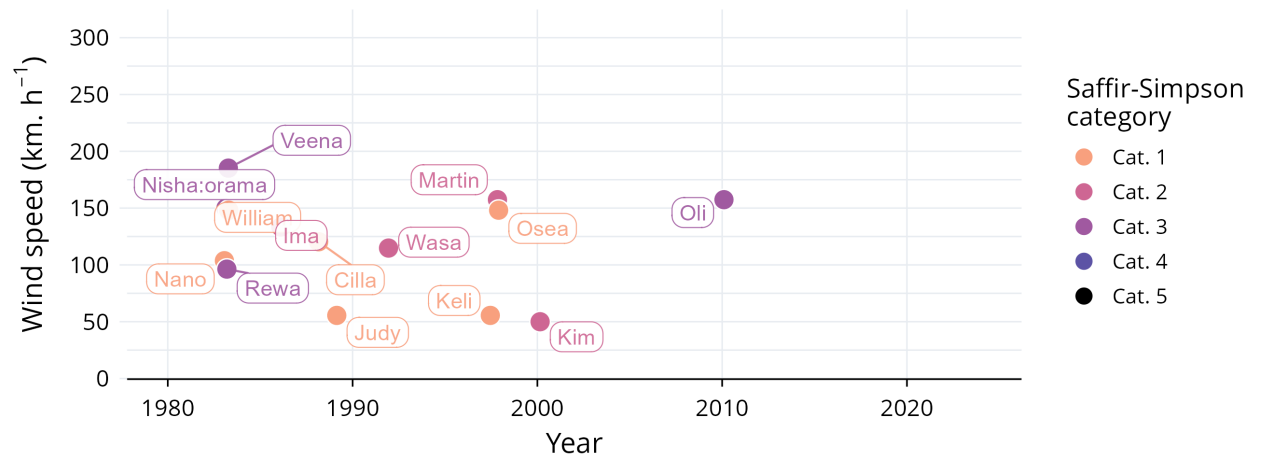
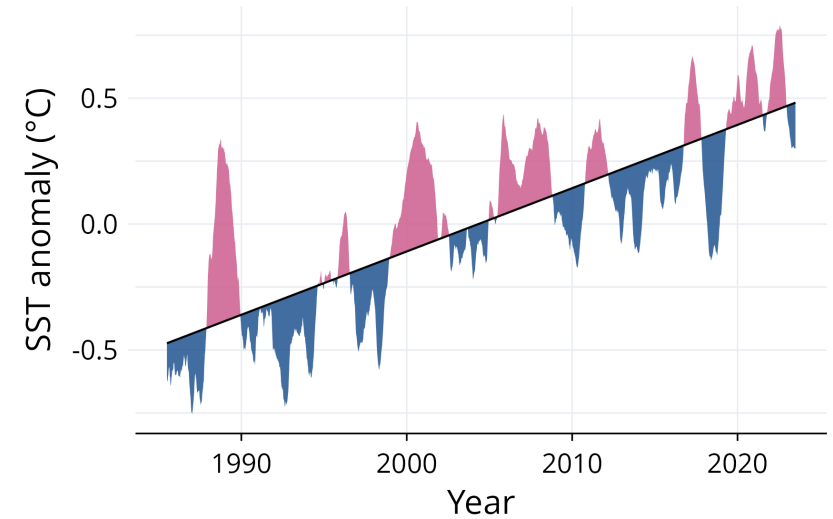
Thermal regime

ENSO • SST anomaly



Cyclones

Intensity • Trajectories



4

Next steps

Materials and Methods
 Countries and territories chapters (Part 2)
 Synthesis for the Pacific (Part 1)
 Executive Summary
 Layout and publication

2025							
Jan.	Feb.	March	April	May	June	July	Aug.
X							
	X	X	X				
		X	X	X	X		
				X	X		
						X	X

5

A potential model for next GCRMN reports



Indicators on coral reef threats (SST anomaly, cyclones)



Collaborative writing on Google Doc



CRediT system authorship approach



Machine learning to estimate temporal trends in benthic cover



All data analyses scripts available in open access (GitHub)

ICRI Secretariat Virtual Handover Event

Thank you for your attention

Jérémy Wicquart, Ph. D.

jeremywicquart@gmail.com

