



# GCRMN-Caribbean report update

9<sup>th</sup> January 2025

# A Guide for Data Contributors



Status and Trends of Caribbean Coral Reefs:  
1970-2024

Status of Coral Reefs of the World: 2025

## A Guide for Data Contributors

The Global Coral Reef Monitoring Network (GCRMN)

An operational network of the International Coral Reef Initiative (ICRI) and hosted at the Australian Institute of Marine Science (AIMS)

June 2024

### TABLE OF CONTENTS

1. The Global Coral Reef Monitoring Network..... 2
2. How does the GCRMN use coral reef monitoring data? ..... 4
3. Which data are of interest for the GCRMN?..... 4
4. How to share your data with the GCRMN?..... 5
5. Where will the data be stored? ..... 6
6. How will the data be standardised? ..... 6
7. How will you be acknowledged in GCRMN publications? ..... 8
8. Contact and Further Help..... 9

**Open till November 30!**

# Data Sharing Agreement



## DATA SHARING AGREEMENT BETWEEN SPAW-RAC, THE GCRMN AND CORAL REEF MONITORING DATA CONTRIBUTORS

This Agreement is entered into by (INSERT NAME OF DATA CONTRIBUTOR) ("Abbreviation"), the Regional Activity Centre for the Protocol Concerning Specially Protected Areas and Wildlife for the Wider Caribbean Region (SPAW-RAC), and the International Coral Reef Initiative (ICRI) Secretariat / Global Coral Reef Monitoring Network (GCRMN), for the licensing of data in accordance with the following terms and conditions.

### BACKGROUND

The Global Coral Reef Monitoring Network (GCRMN) supports the International Coral Reef Initiative (ICRI) by working through a global network of institutions, agencies, organisations and individuals to strengthen the provision of best available scientific information on and communication of the status and trends of coral reef ecosystems, for their conservation and management. To achieve this objective, the GCRMN periodically produces a range of reports, publications, and products, including regional reports with support of the GCRMN's regional node coordinators and their institutions. The Regional Activity Centre for the Protocol Concerning Specially Protected Areas and Wildlife for the Wider Caribbean Region (SPAW-RAC) will manage the production of a regional report from the GCRMN Caribbean GCRMN region.

These products rely on the provision of high-quality scientific data and information from numerous contributors. This Data Sharing Agreement (DSA) specifies the terms and conditions by which data are shared and used under the auspices of the GCRMN.

1 AGREEMENT TERM			
Commencement date	Upon signature	Completion date	31 December 2026

2 CONTRIBUTOR DETAILS			
Full legal name			
Company number (if applicable)			
Mailing address			
Primary contact person	Email		
	Telephone		



# Call for Data

## GCRMN-Caribbean

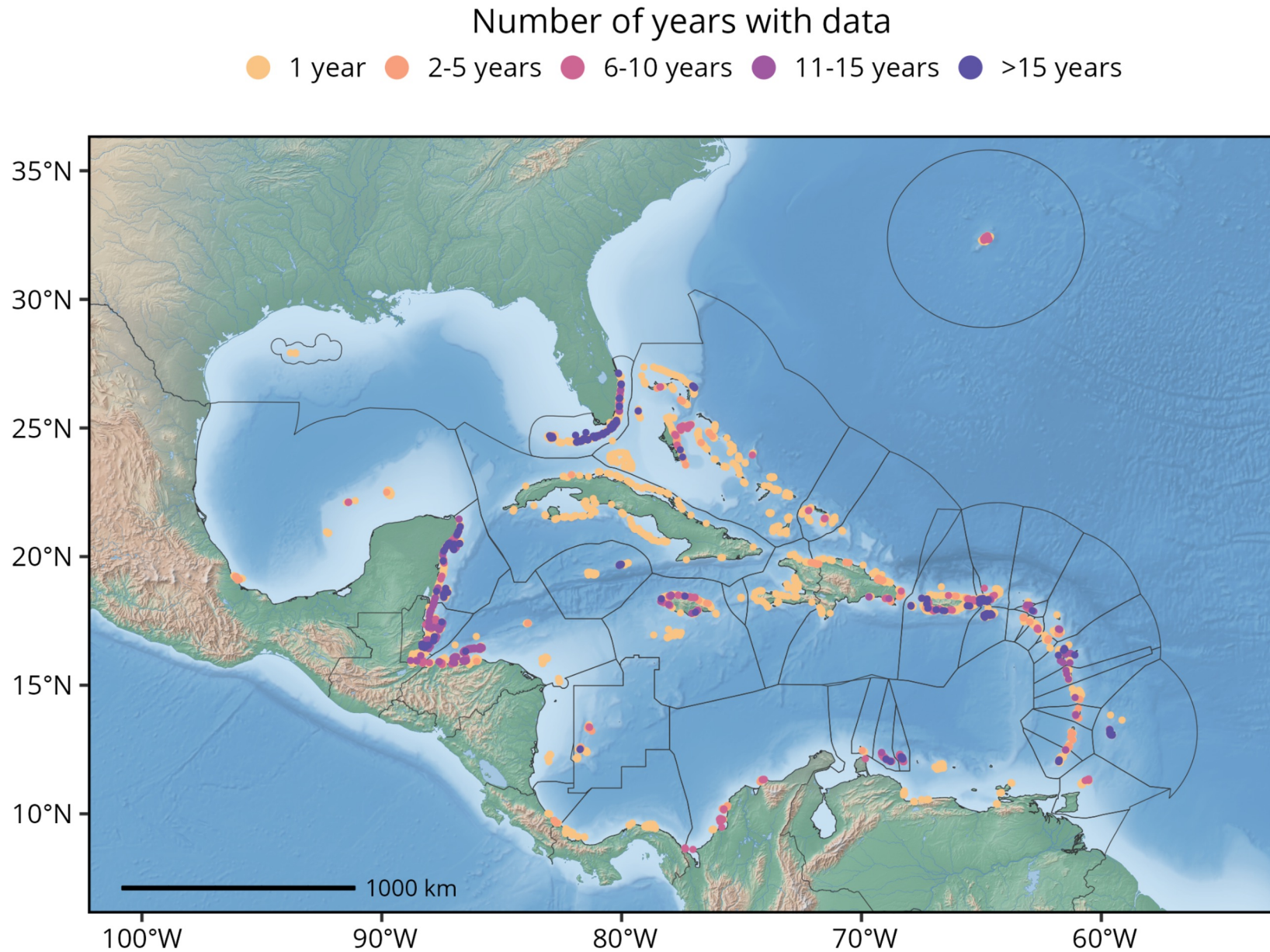
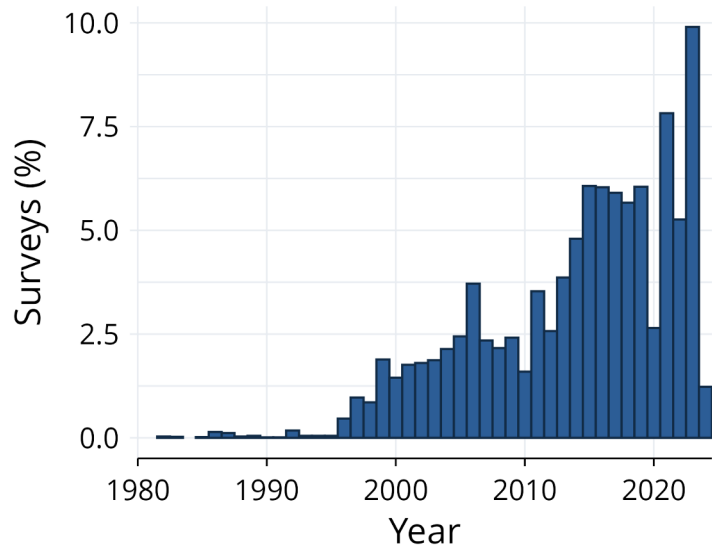
Regional Report Status of  
Caribbean Coral Reefs  
1970 - 2024

*Join the momentum!*

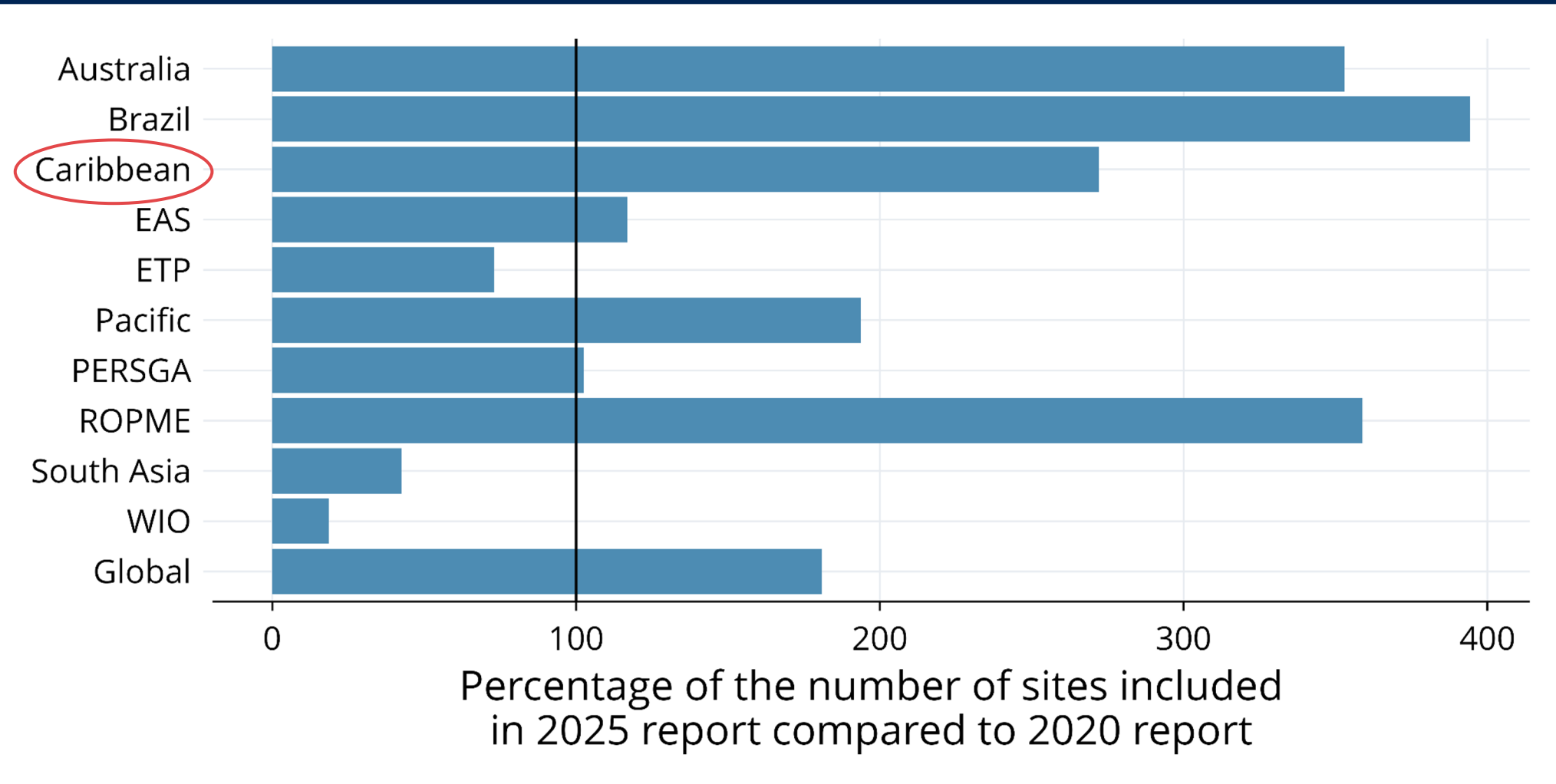


# Data collation

<b>Number of datasets</b>	<b>48</b>
<b>Number of sites</b>	<b>8,437</b>
<b>Number of surveys</b>	<b>16,379</b>
<b>First year</b>	<b>1982</b>
<b>Last year</b>	<b>2024</b>



# Data collation



# Workshop Data Analysis

**GCRMN-GFCR Data Workshop, 1-4 October**

**Puerto Morelos, UNAM, Mexico**

- Data Integration and Identification of data gaps.
- Data Analysis and first results Interpretation
- Standardized Methodology
- Work Plan Proposal
- Cooperation and synergies with GFCR



# Data Workshop

15 Caribbean experts

Universidad Nacional Autonoma de Mexico

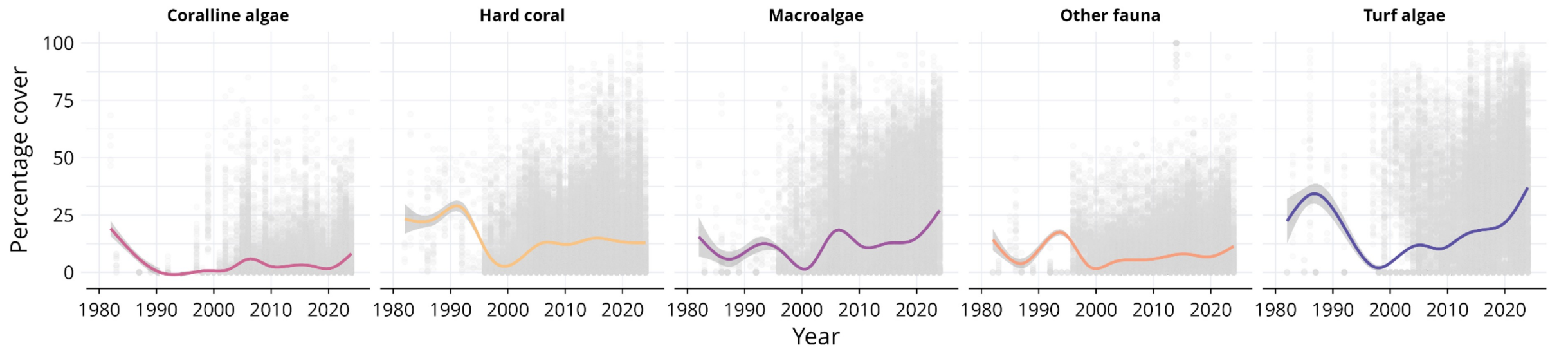
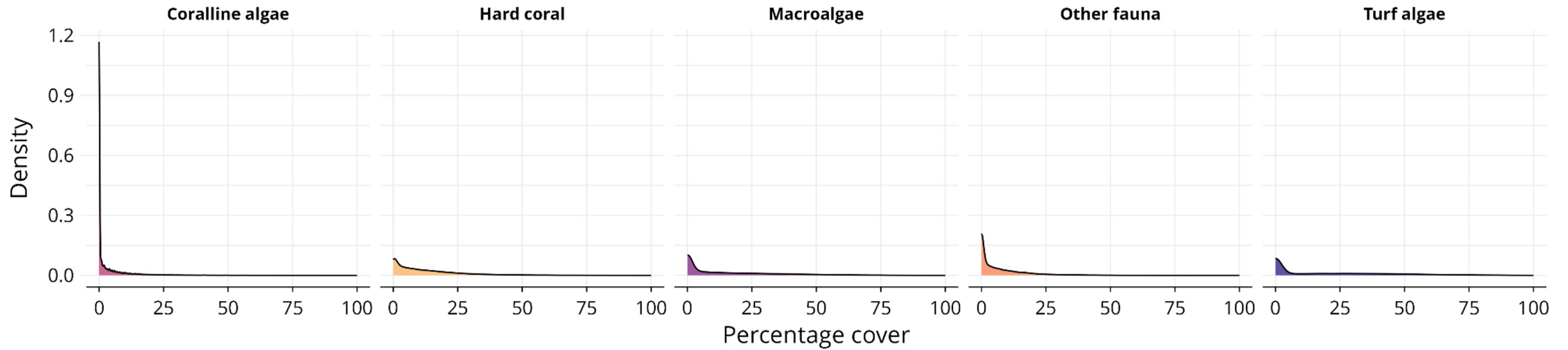
2 visit of Laboratories



# Data exploration



Data exploratory analysis not modelled temporal trends



# Next Steps

- Finalise data collation for benthic cover data:
  - Check for data on MERMAID
  - Check with previous data contributors (2012 Caribbean report and 2020 global report)
- Contact all data contributors to validate data integration (check spatio-temporal distribution of monitoring sites)
- Run machine learning models to estimate temporal trends of major benthic categories
- Produce all the plots and tables of other indicators (SST, hurricanes, etc)
- Integrate and analyse fish data

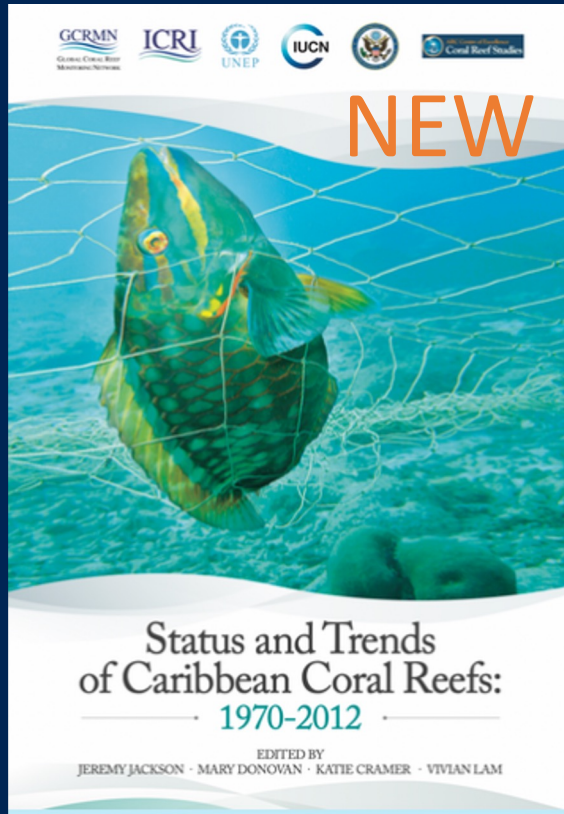


## Challenges for fish data

- Natural variability
- Species lists
- Differences in monitoring methods
- Qualitative size estimates (i.e. size bins)
- Length type (fork vs tail)



# Report Content 2025



Foreword & introduction

Executive summary (Caribbean level)

- Key results
- Major threats
- Key recommendations

Part I: Regional Caribbean analysis

Part II: Countries and territories chapters

Case studies

Materials & Methods

Supplementary Materials

Bibliography

**Added value of the  
2025 Caribbean report:**

Country Level

Fish data

Case studies on regional issues  
(Bleaching, SCTL, Diadema  
Abundance, etc.)

SocMon data for the region

## 4- Next steps: Work process



### Core editor team

*Role: Coordination + ensure consultation*

(Auriane Petit, Melanie McField, Jeremy Wicquart)



### Data Task Force

*Role: Data Analysis Review*

Jeremy Wicquart (coordinating),

Lorenzo Alvarez-Filip, Aldo Croquer, Israel Muniz, Tyler Smith, Laetitia Mathon, Patricia Kramer, Fabio, *etc.*



### Writers team



*Role: Writing of the Regional Analysis (Part 1) & Coordination of Country/territory chapters (Part 2) writing teams*

Team to be chosen (Call for Tender)



### Authors at large:

*Regular consultation by email & open meetings*

-Data contributors: all data contributors

-Experts: Regional GCRMN experts

- **Report target audience:**  
Regional and global political decision-makers  
Conservationists & MPAs managers

- **Strategic publication date:** UN Ocean Decade  
-> UN Ocean Conference In June 2025 (Nice, France)  
-> COP Cartagena Convention in Fall 2025 (Caribbean region)  
CARICOM - mainstreaming reef protection?

