



shams

General Organization for Conservation
of Coral Reefs and Turtles in Red Sea

The Red Sea Outlook Report 2024

Coral Reefs in the Red Sea,
Kingdom of Saudi Arabia

Dr. Mohammed Ismail

General Director of Coral Reef Monitoring and
Assessment, SHAMS

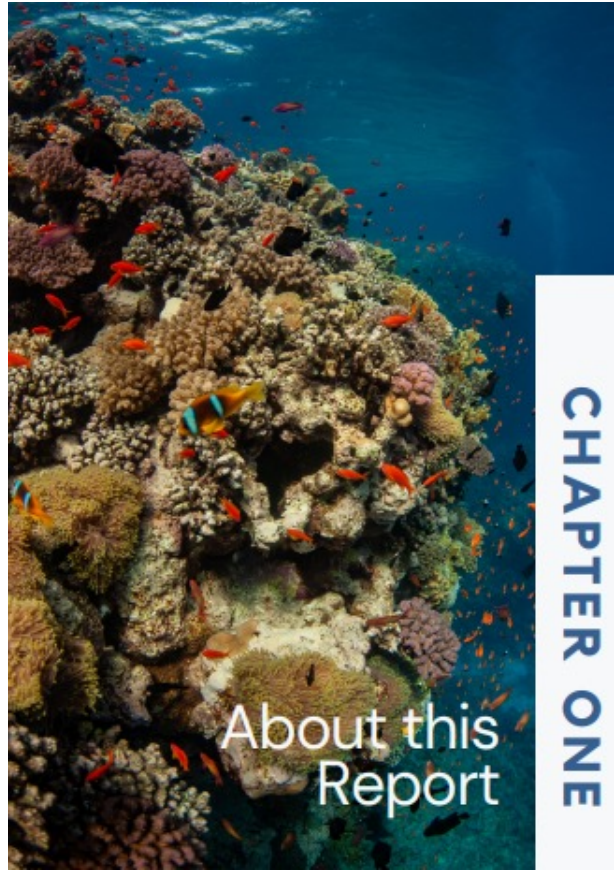


Public

Table of Contents



01 About this Report	02 Coral Reefs and Associated Ecosystems	03 Rare and Threatened Species
04 Physical and Environmental Characteristics	05 Biological and Ecological Processes	06 Marine Heritage
07 Commercial and Non-commercial Use	08 Threats to Coral Reefs and Associated Ecosystems and Species	09 Threats to Cultural, Economic and Social Benefits of Marine Heritage
10 Existing Protection and Management	11 Outlook	12 Recommendations for Conservation and Management
13 Report Summary		



About this Report

CHAPTER ONE

Contents

0	EXECUTIVE SUMMARY	22
1	ABOUT THIS REPORT	31
1.1	Background	30
1.2	Scope	33
1.2.1	Geographic Area	33
1.2.2	Time Period	33
1.2.3	Available Information	33
1.3	Report Structure	35
1.4	Assessment Approach	36
1.4.1	Grades	39
1.4.2	Trends	40
1.4.2	Confidence	40
2	CORAL REEFS AND ASSOCIATED ECOSYSTEMS	41
2.1	Marine Ecoregions and Ecosystems	43
2.2	Coral Reefs	45
2.2.1	Ecosystem Services	45
2.2.2	Extent, Types, and Habitats	46
2.2.3	Species Diversity and Endemism	48
2.2.4	Distribution and Abundance of Assemblages and Species	49
2.2.5	Condition and Trends	51
2.2.6	Resilience	57

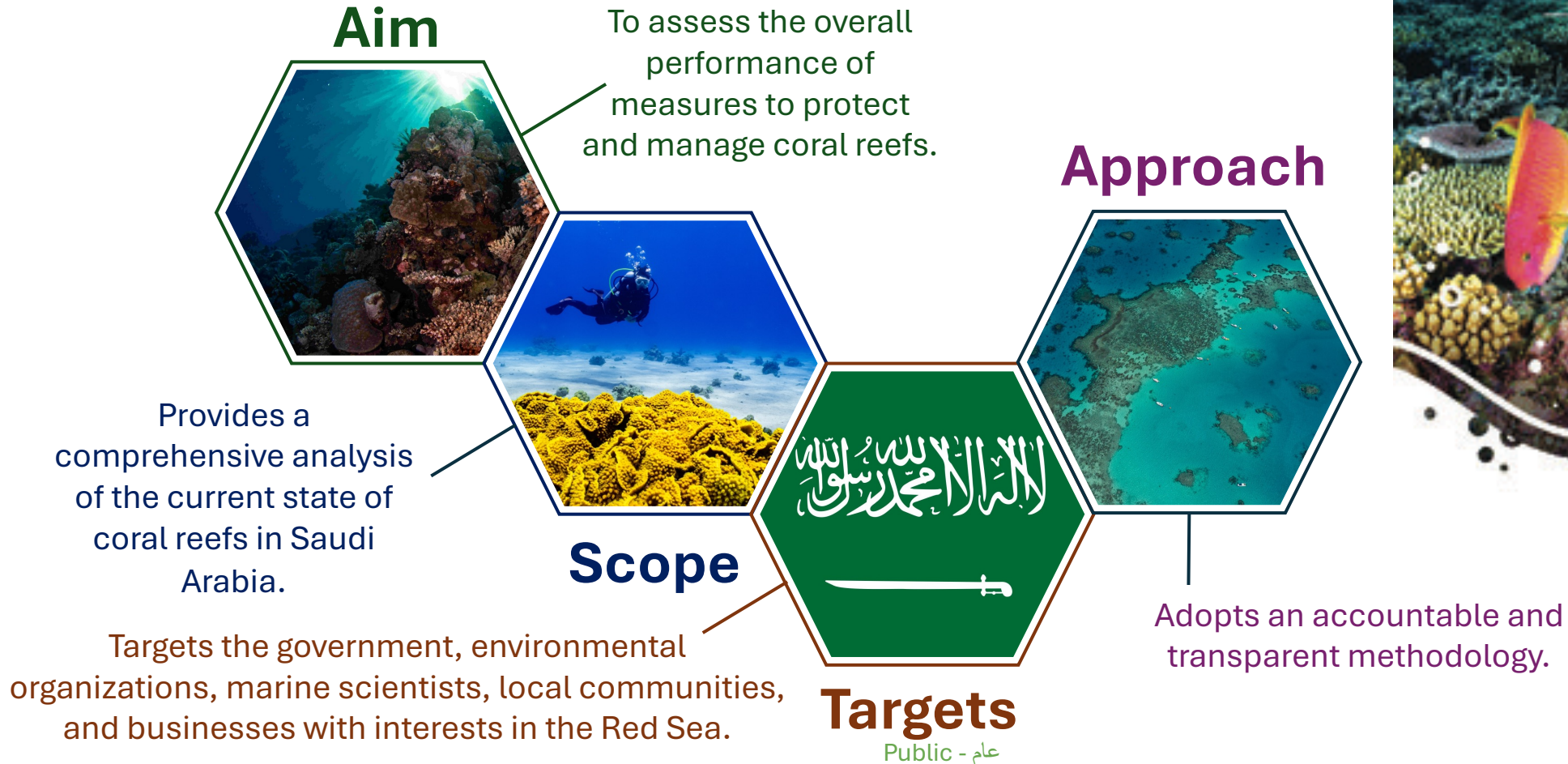
Why the report ?

Despite data limitations, **SHAMS** recognized the critical need for a status outlook report on coral reefs and sea turtles to guide conservation efforts in the face of rapid development in the Red Sea.

This proactive step aimed to establish a baseline understanding of these ecosystems, identify key threats, and inform sustainable development strategies while demonstrating Saudi Arabia's commitment to environmental stewardship and contributing valuable data to the global conservation community.



Outlook report



Confidence

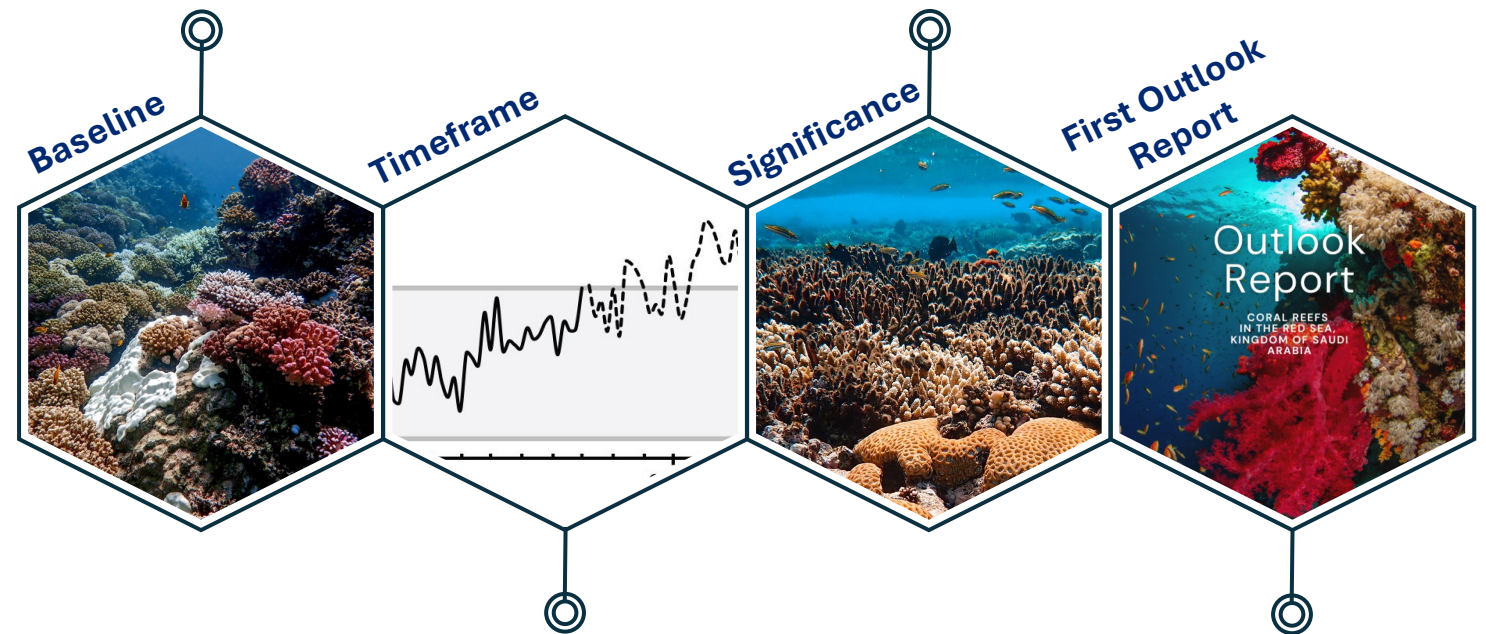
Grade & Trend	Grade	Trend	Criterion and Component Remarks
			Economic and Social Benefits of Commercial and Non-commercial Uses: The economic and social benefits vary depending on the use.
			Fisheries: Coral reef fisheries provide food, income, and employment to many coastal cities and villages. Fishing pressure has decreased in some areas.
			Ports and Shipping: Both ports and shipping are some of the most important economic activities along the Saudi Arabian Red Sea coast. They continue to provide essential trade and employment.
			Aquaculture: Aquaculture produces food and provides employment and has been increasing in some areas.
			Coast Guard: Coast guard provides national security services by restricting access near palaces, industry, and international borders.
			Tourism and Recreation: There has been an increase in tourism and recreation since the 1980s. These activities provided income and enjoyment, especially near major villages and cities.
			Research and Educational Activities: Research on the KSA Red Sea has been increasing, however key data are still lacking in some areas and there is limited data sharing between key stakeholders. Currently, there is limited environmental education within KSA curriculum, but education opportunities are increasing.

Grading statements: Economic and Social Benefits of Commercial and Non-Commercial Use				Trend since the 1980s
				Improved Stable Deteriorated No consistent trend
Very Good: Provides significant economic and social benefits.	Good: Provides some valuable economic and social benefit.	Poor: Provides few and declining economic and social benefits.	Very Poor: Provides little or no economic and social benefits.	Confidence
				Adequate high-quality evidence Limited evidence Inferred, very limited evidence

This report is based on a desktop review of peer-reviewed scientific papers and technical reports (potentially not subject to peer-review).

The report establishes a historical context for coral reef conditions in Saudi Arabia.

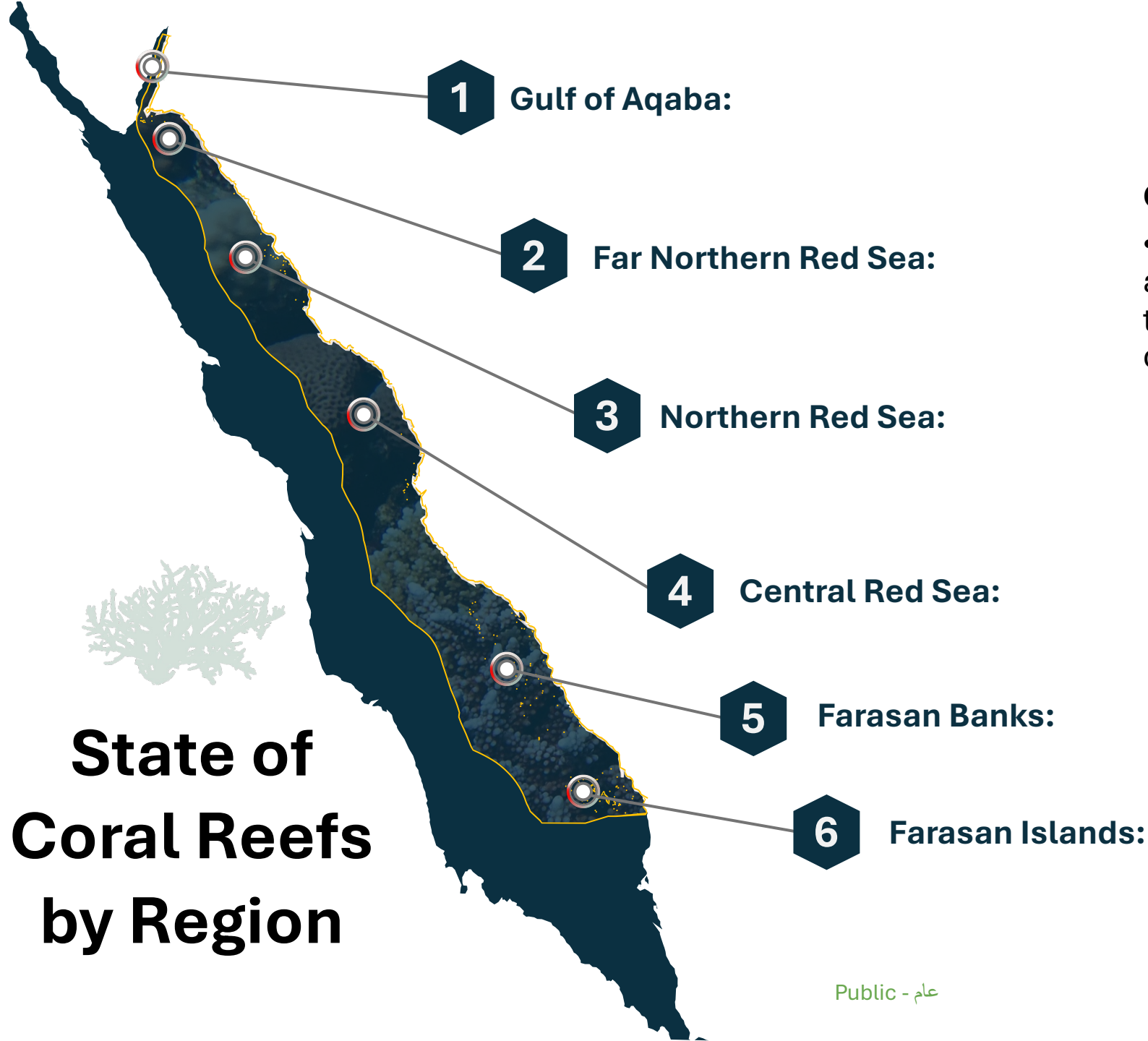
Provides a long-term perspective on changes in coral reef health and ecosystems.



The analysis spans over 40 years, starting from the 1980s.

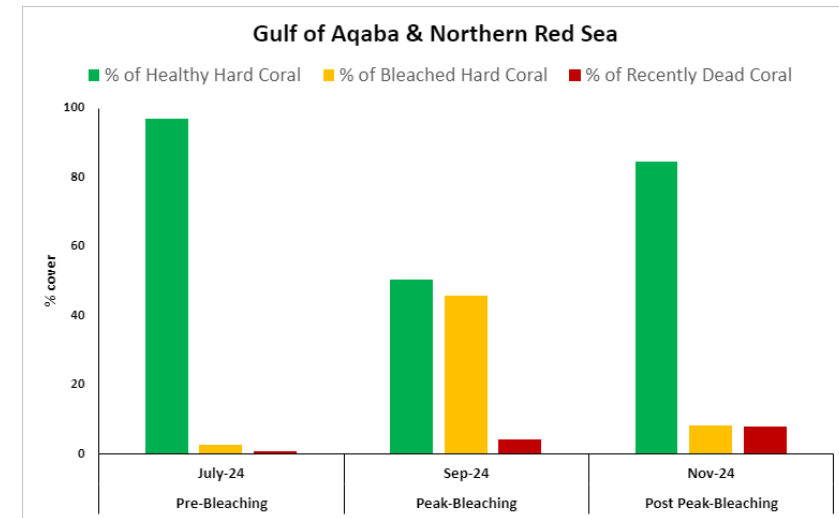
This is the inaugural report of its kind for Saudi Arabia's Red Sea.

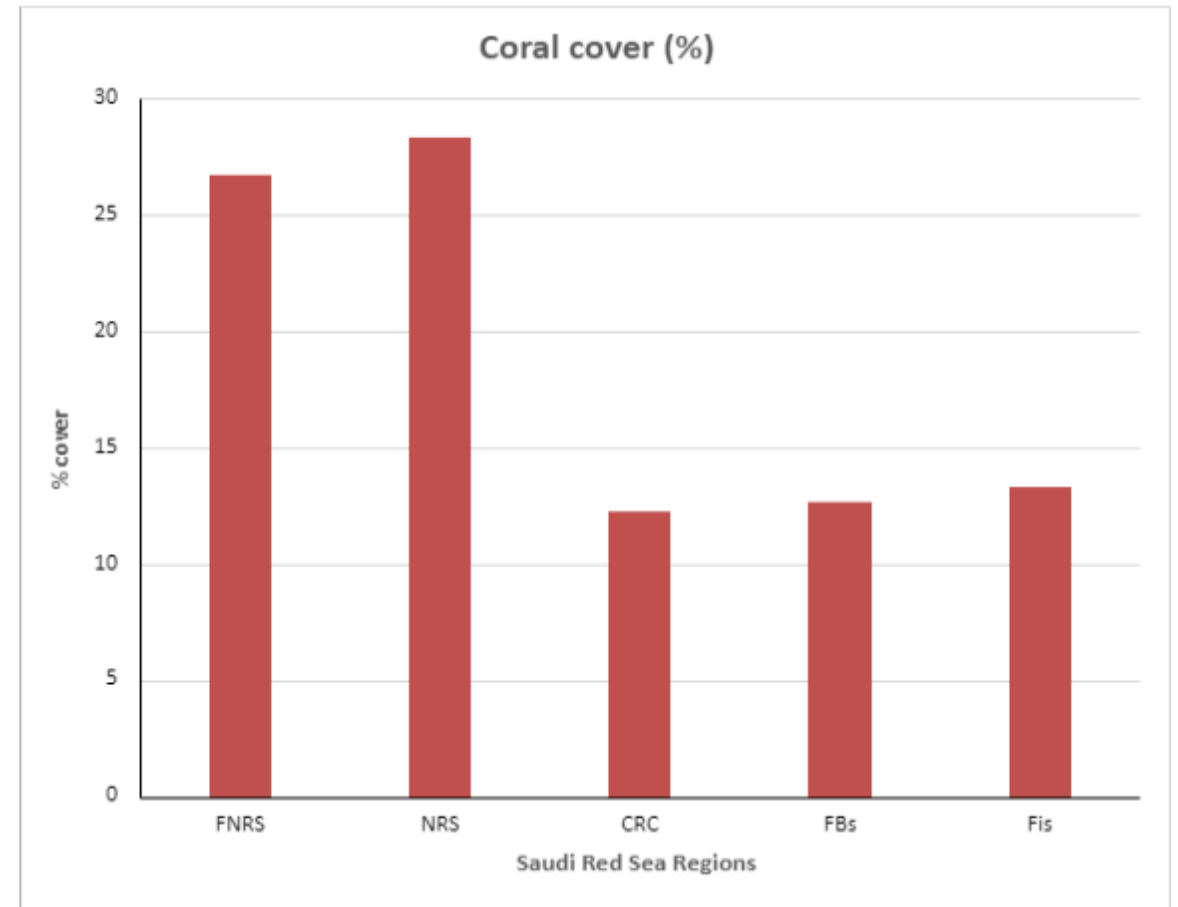
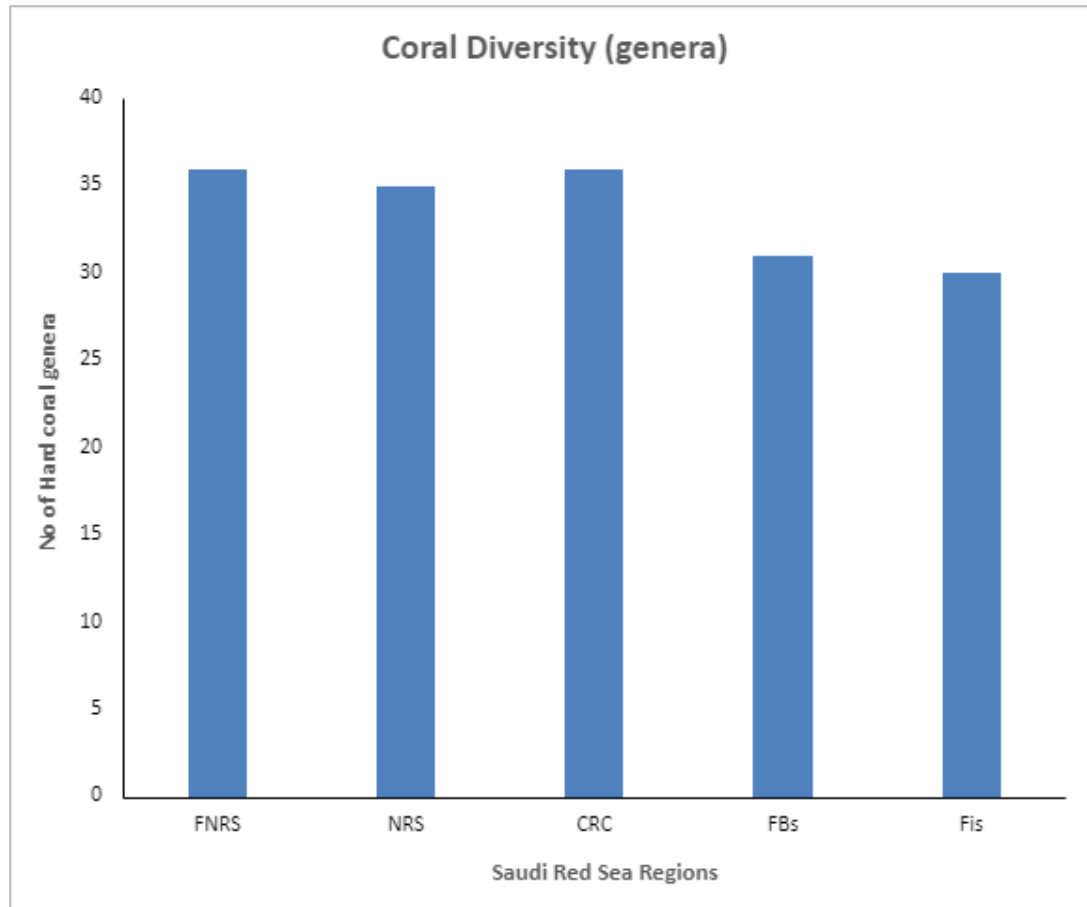
State of Coral Reefs by Region



Geographic Area

- While Saudi Arabia's coast extends along the Red Sea and Arabian Gulf, this Outlook Report focusses solely on the Red Sea





THANK YOU!

Public - عام



Website
Shams.gov.sa



Social Media
@shams_gov



Email
Mohammed.elsayed@shams.gov.sa