



STATUS OF CORAL REEFS OF THE WORLD: 2025

THE GLOBAL CORAL REEF MONITORING NETWORK (GCRMN)

09 January 2025

Tom Dallison

*Strategic Adviser to ICRI, Data Collation Co-Lead and Editorial Team Lead for
GCRMN's Status of Coral Reefs of the World: 2025*



THE STATUS OF CORAL REEFS OF THE WORLD

2025 REPORT

Given the urgency to conserve coral reefs and the commitments made by countries to 2030, the GCRMN is developing its seventh “**Status of Coral Reefs of the World**” global report which will be released in 2026.

The report will describe the global-level temporal trends of:

- Hard coral
- Macro algae
- Turf algae
- Coralline algae

Including indicators on threats such as cyclonic activity, SST anomalies, human population density (TBC)



THE STATUS OF CORAL REEFS OF THE WORLD

DATA COLLATION PROCESS ON-GOING

Data Collation is being led by Tom Dallison and Jérémy Wicquart

Timeline:

- **Data Collation**, Integration & Standardisation: **2024**
- Data Analysis: **2025**
- Report Production (writing & consultation with regional production driven by regional coordinators and contributors): **2025**
- Launch & dissemination: **2026**

Contents:

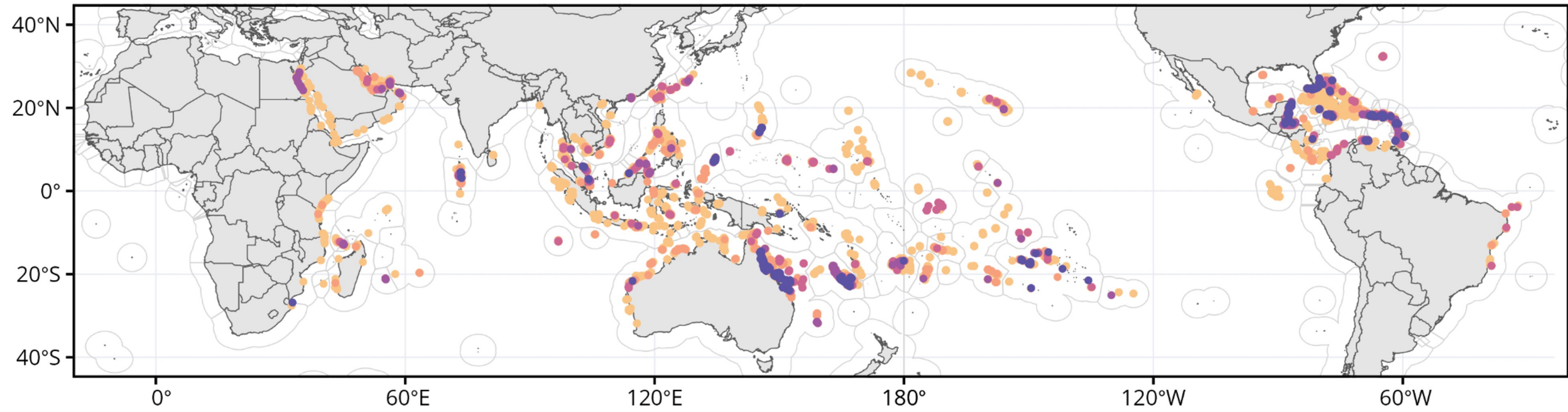
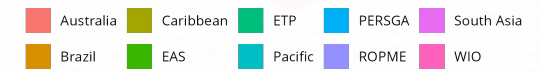
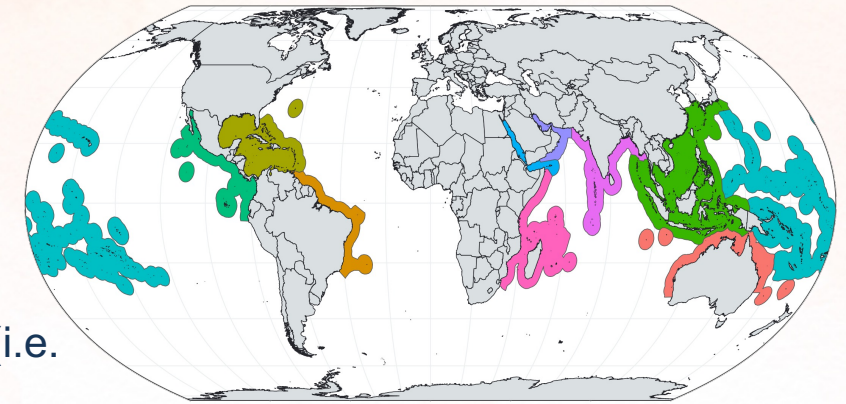
- Part 1 – Global Synthesis
- Part 2 – Regional Chapters
- Case studies / boxes
- Summary for Policy Makers



THE STATUS OF CORAL REEFS OF THE WORLD

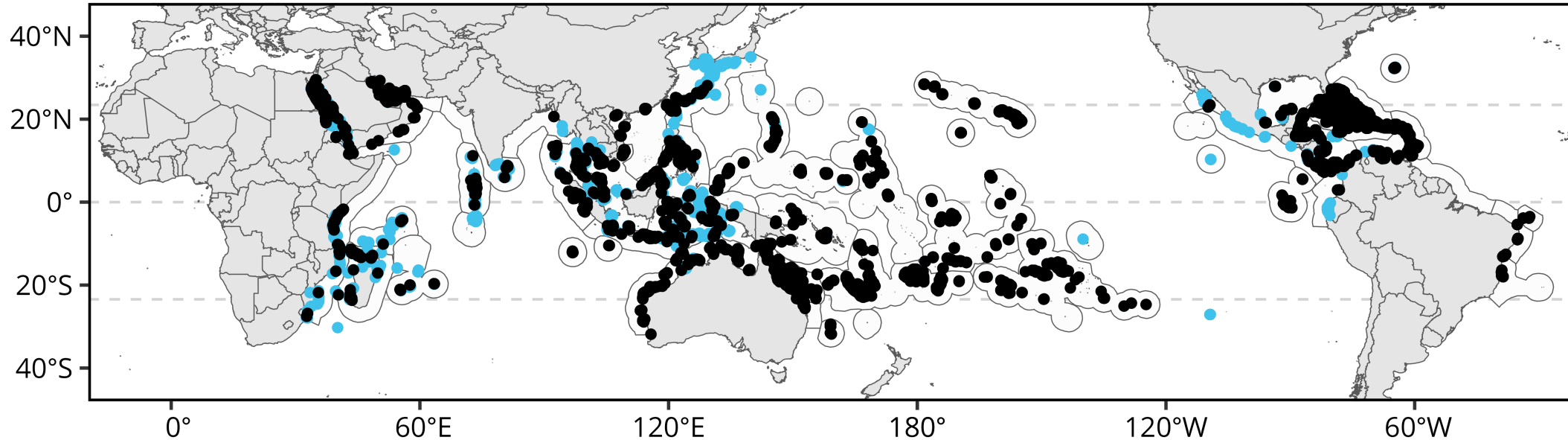
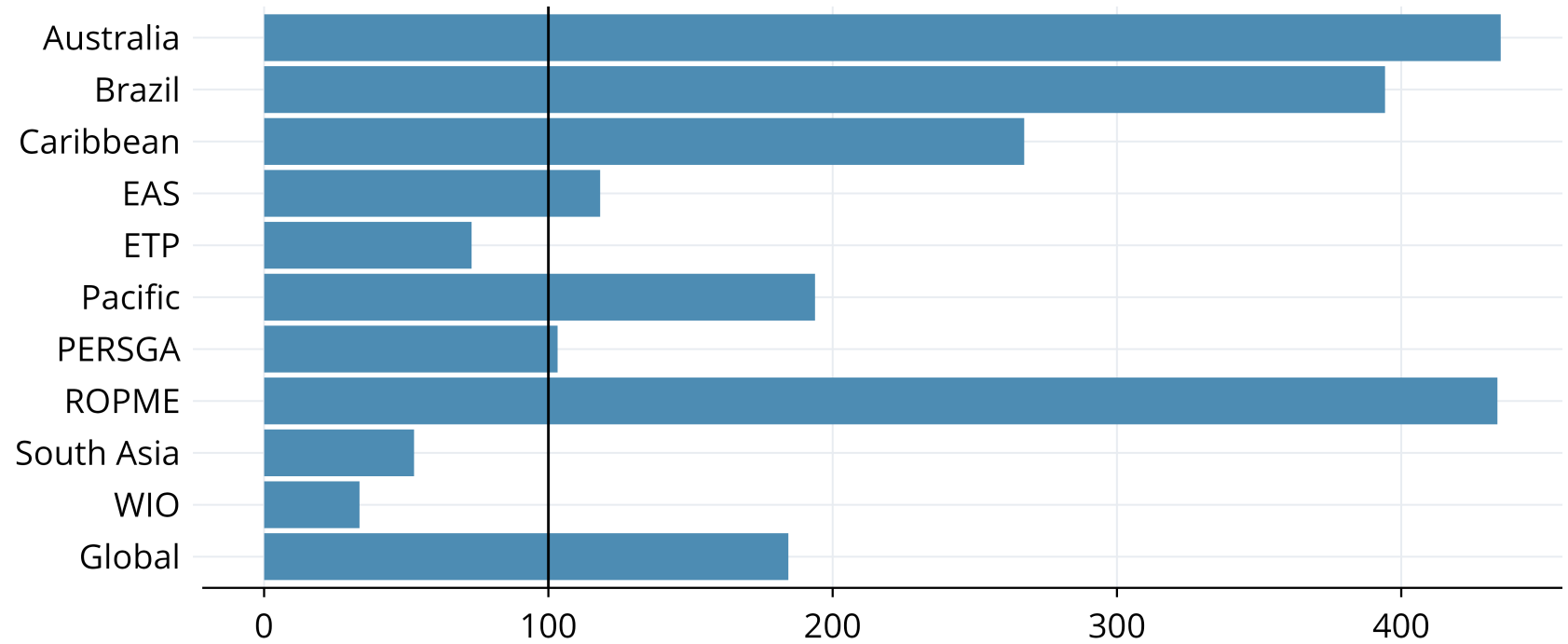
2025 REPORT

As of 02-01-2025, the global dataset contains a total of **20,813,820** observations (i.e. rows) representing **23,753** sites and **50,112** surveys.



2025 REPORT

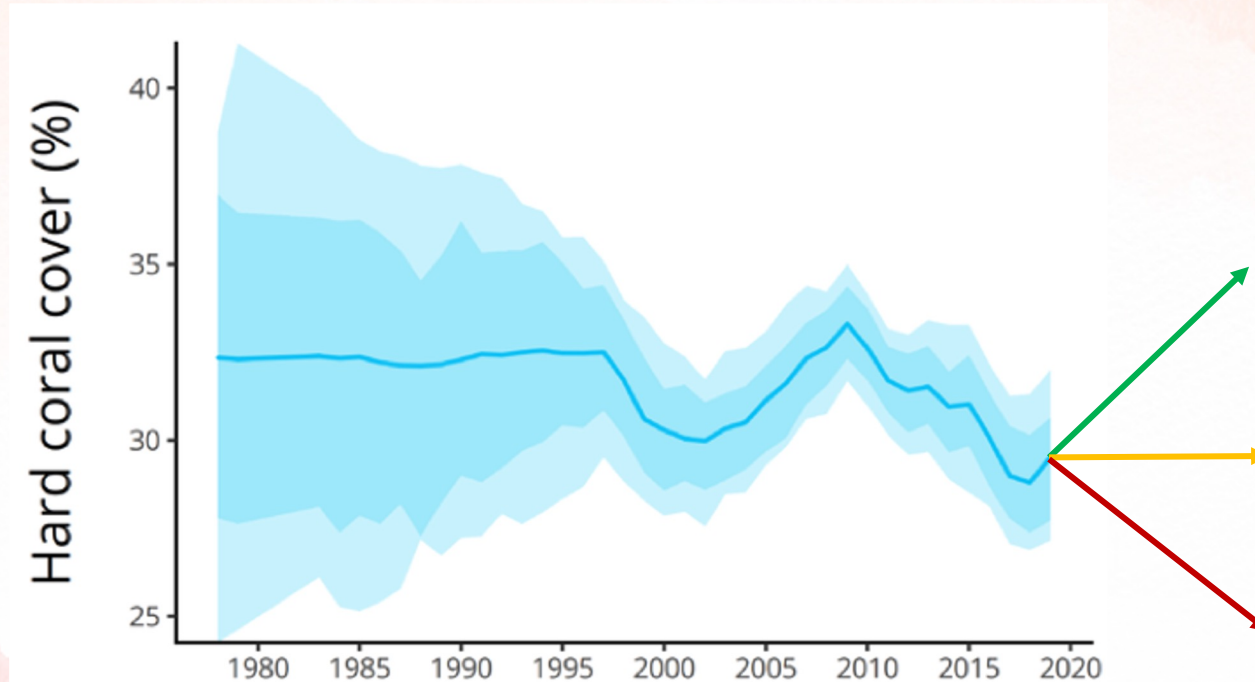
- Data Collation on-going
- Working with final regions to ensure high-level of representation
- Two upcoming workshops with Red Sea and South Asia regions
- [Still time to contribute your data!](#)



**VIEW THE
INTERACTIVE
MAP OF DATA**

GCRMN.NET

THE STATUS OF CORAL REEFS OF THE WORLD



The production of GCRMN reports relies on the ongoing support of data contributors who are willing to share their coral reef monitoring data.

If you have coral reef monitoring data, and would like to contribute to, and collaborate on, the next 2025 global report, contact Tom & Jérémy or visit –

www.gcrmn.net/2025-report

Are we **turning a corner**, or **continuing down the same path**?



THANK YOU

Tom Dallison, thomas.dallison@icriforum.org
Jérémy Wicquart, jeremywicquart@gmail.com
Francis Staub, fstaub@icriforum.org
Britta Schaffelke, B.Schaffelke@aims.gov.au

