

From images to insight: democratising coral reef monitoring for global impact

ICRI #ForCoral webinar series

Dr Emma Kennedy | ReefCloud

Webinar: Harnessing AI to monitor coral reefs

Thursday 2nd October 2025

Australian Institute of Marine Science

ACKNOWLEDGEMENT

**We acknowledge the Traditional Custodians and First Nations People
of the land where we meet today,
and pay our respects to elders past, present and future.**

We honour their continuing culture, knowledge, beliefs
and spiritual relationship and connection to Country.

We also recognise Aboriginal and Torres Strait Islander peoples as
the Traditional Owners of the land and sea country on which
AIMS works, and as Australia's first scientists.

Through collaboration and two-way knowledge sharing, we can learn from each other.



Reefs around the planet are degrading faster than we can track

14% of the world's
coral has been lost
since 2009

Understanding the ocean from a drop of water

~35,754 monitoring sites

~300,000 km², shallow water reef extent

0.0006% of reef
surveyed

Central challenges in coral reef monitoring

1.
We can't manage
what we don't
measure



Monitoring is expensive



Inconsistency in methods

2.
Access to
information is
limited

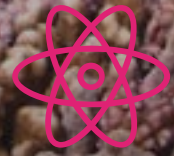


Data access is
limited



Unequal capabilities
worldwide

3.
Science advice is
delayed



High-level of expertise exclude
participation

Technology to broaden participation

Collect

Analyse

Synthesise

Guide

WISDOM

Understanding,
actionable, informed
decision-making

KNOWLEDGE

e.g, Regional and
global synthesis

INFORMATION

e.g., Species
cover

DATA

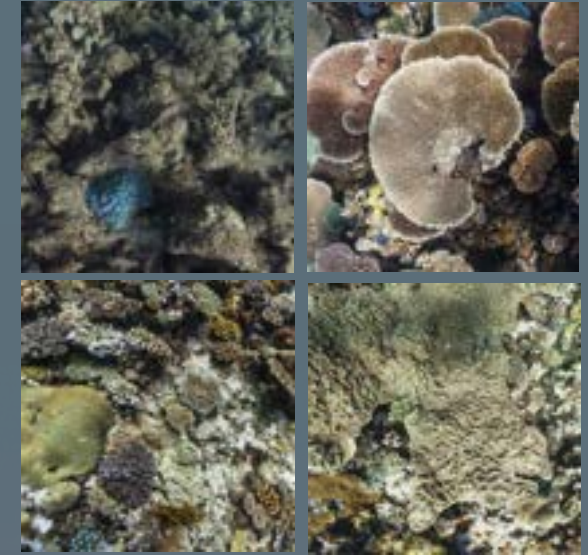
e.g., Benthic
images

+ insight

+ meaning

+ context

Photo-quadrats



- Standard data format
- Contain a wealth of information
- Quick method for collecting data
- No high-specialised training
- Permanent record of reef condition

Introducing ReefCloud



How it works



**Management
and storage of
photo data**

Cloud-based
computing



**Analyse with
manual and AI
tagging**

Machine Learning
algorithms



**Automated
analysis and
reporting**

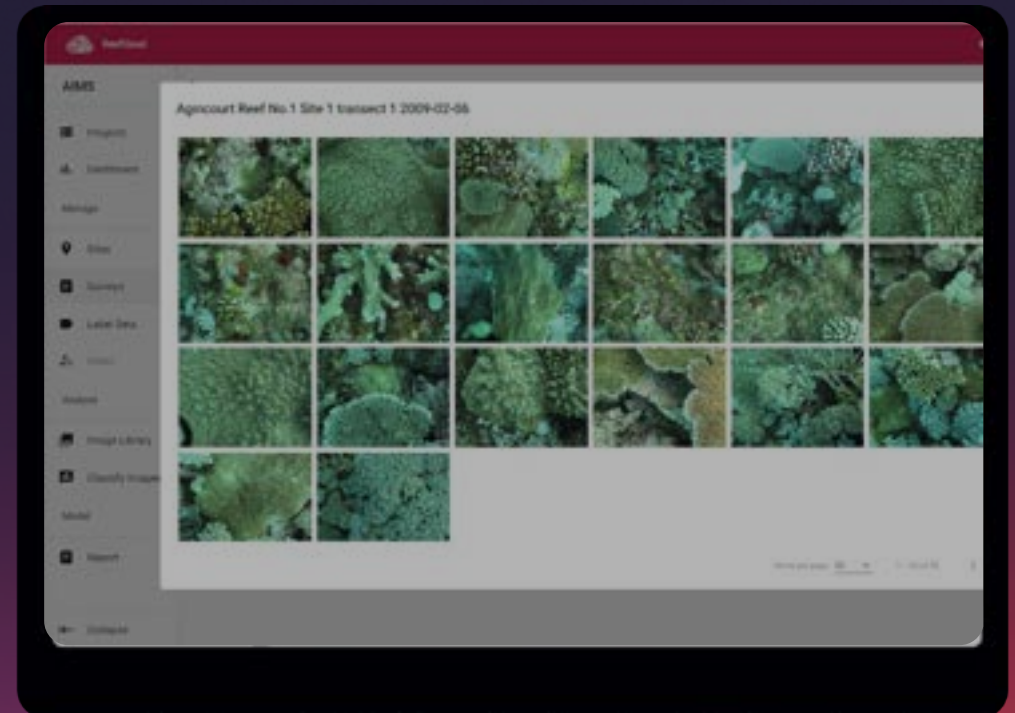
Statistical
modelling

A secure global repository for our reef data

- AIMS long term monitoring program
- Local research institutions
- Indigenous Rangers
- Tourism Operators



Management
and storage of
photo data



Indigenous Scientists

Bardi Jawi Sea Rangers



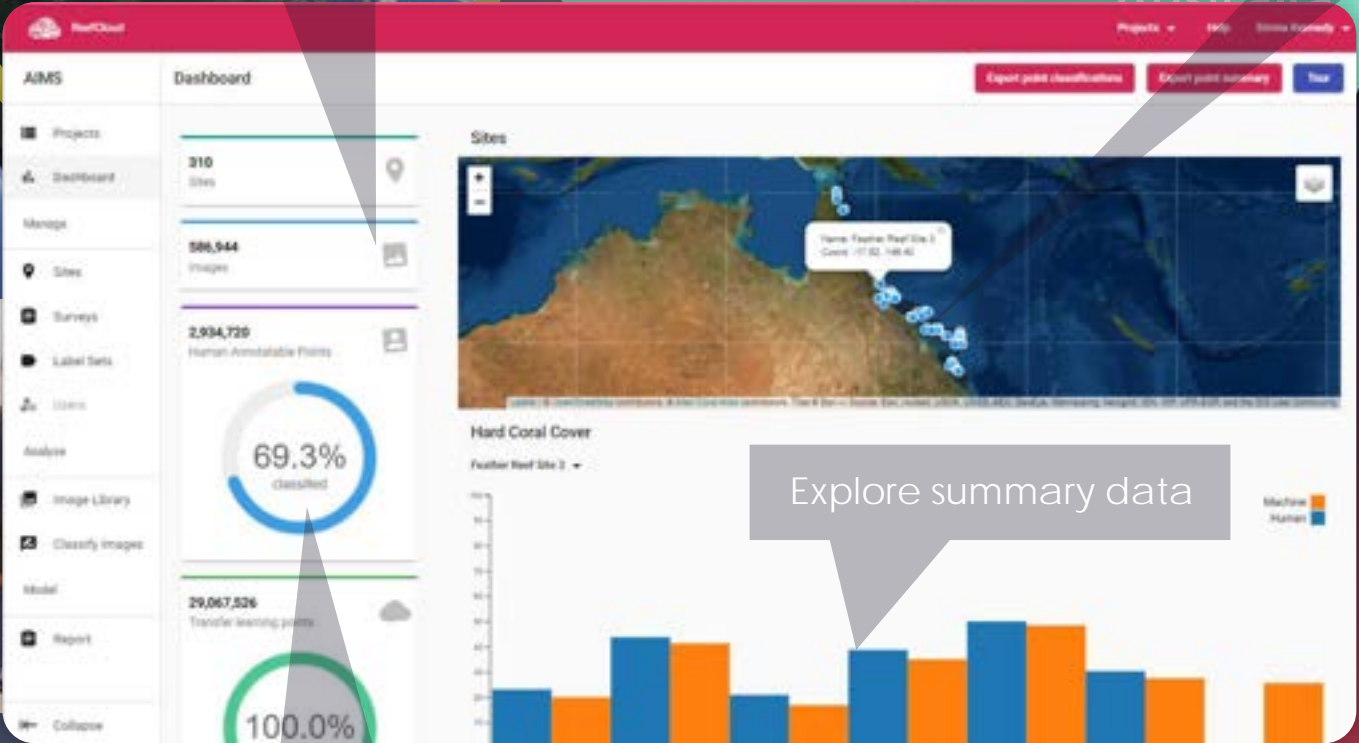
Bardi Jawi

Anindilyakwa

Torres Strait

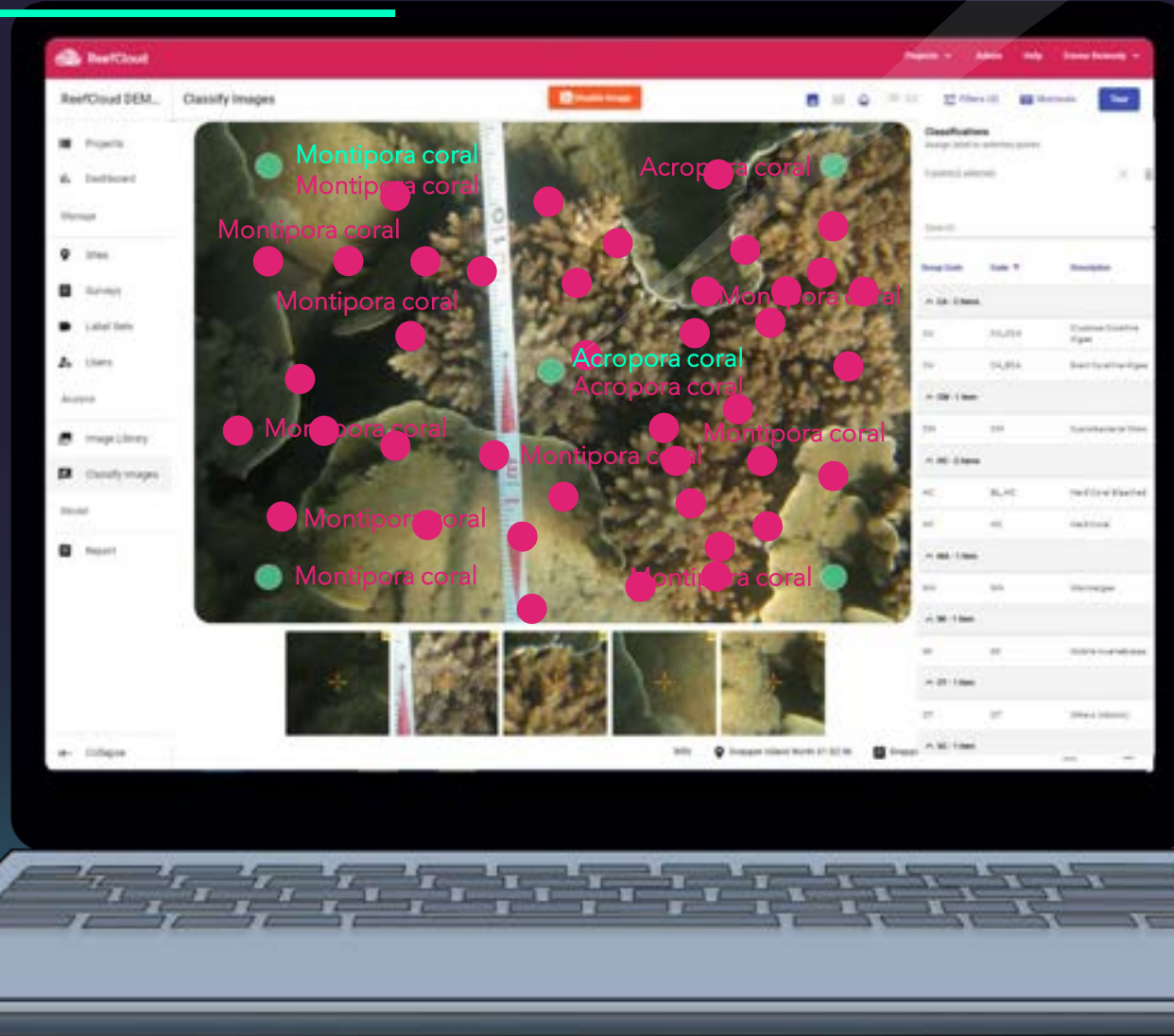


View reef sites on the map

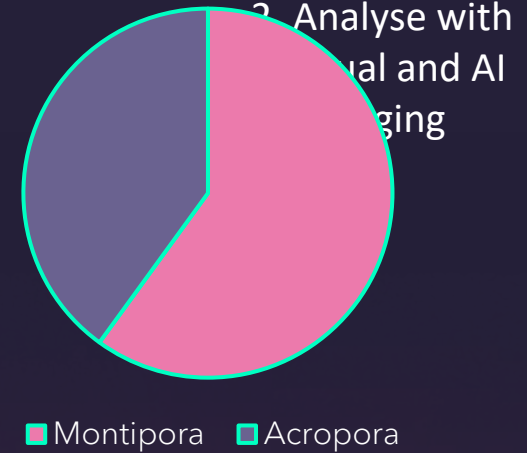


Train AI machine

AI to speed up workflows

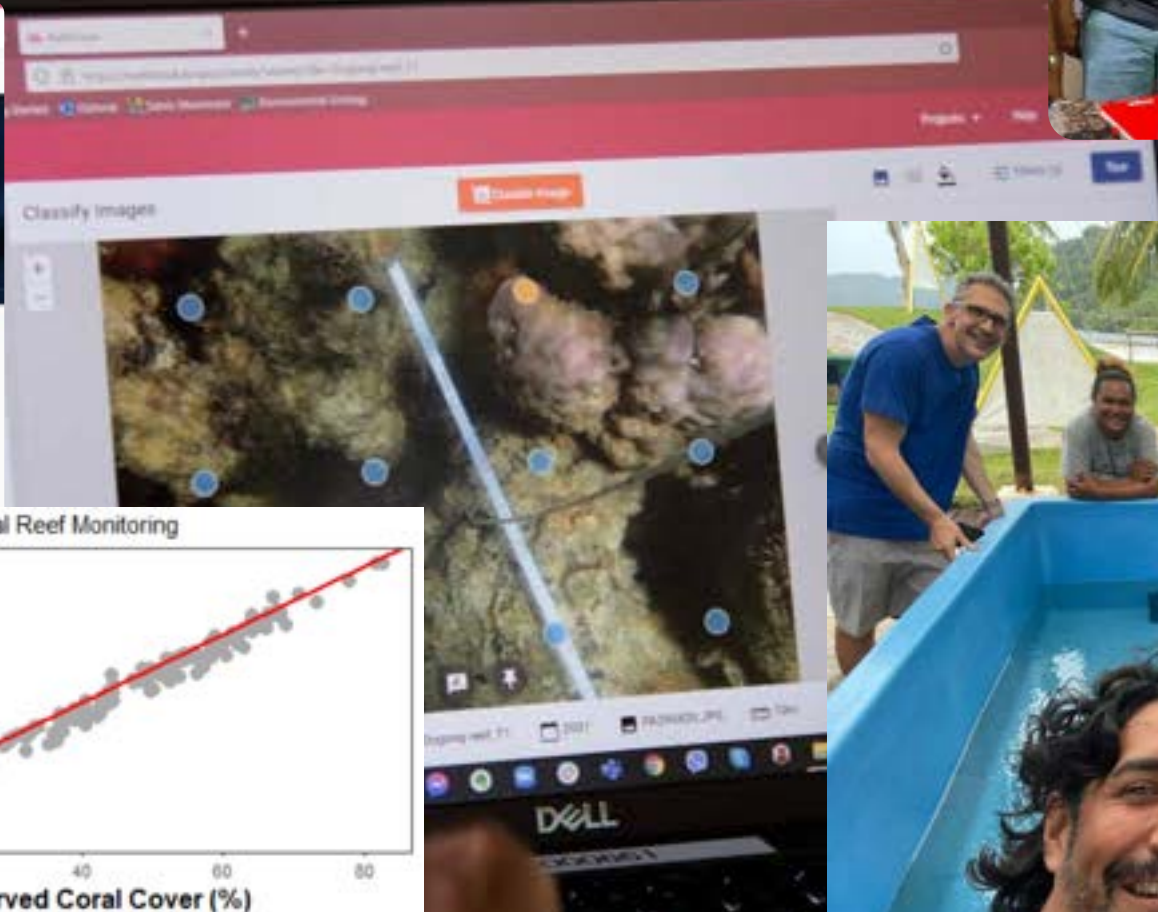
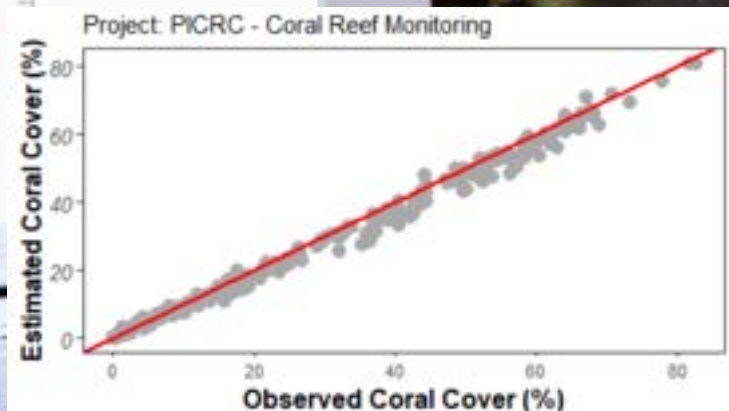
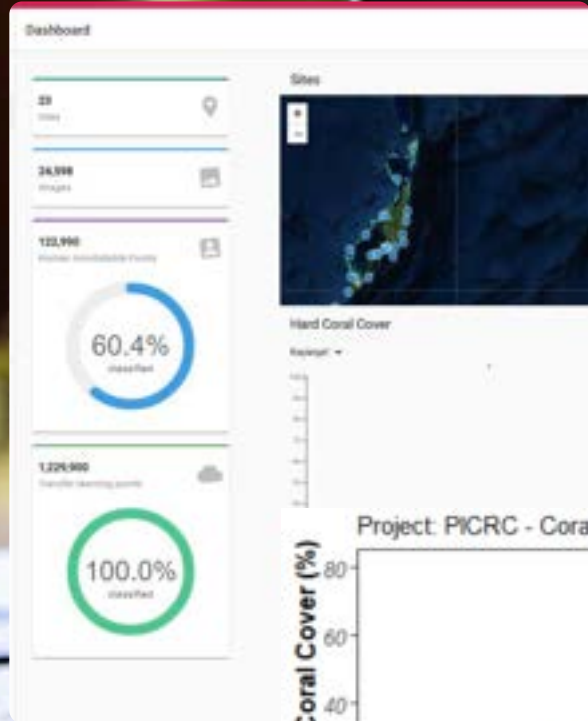


Annotation points



Pacific Partnerships

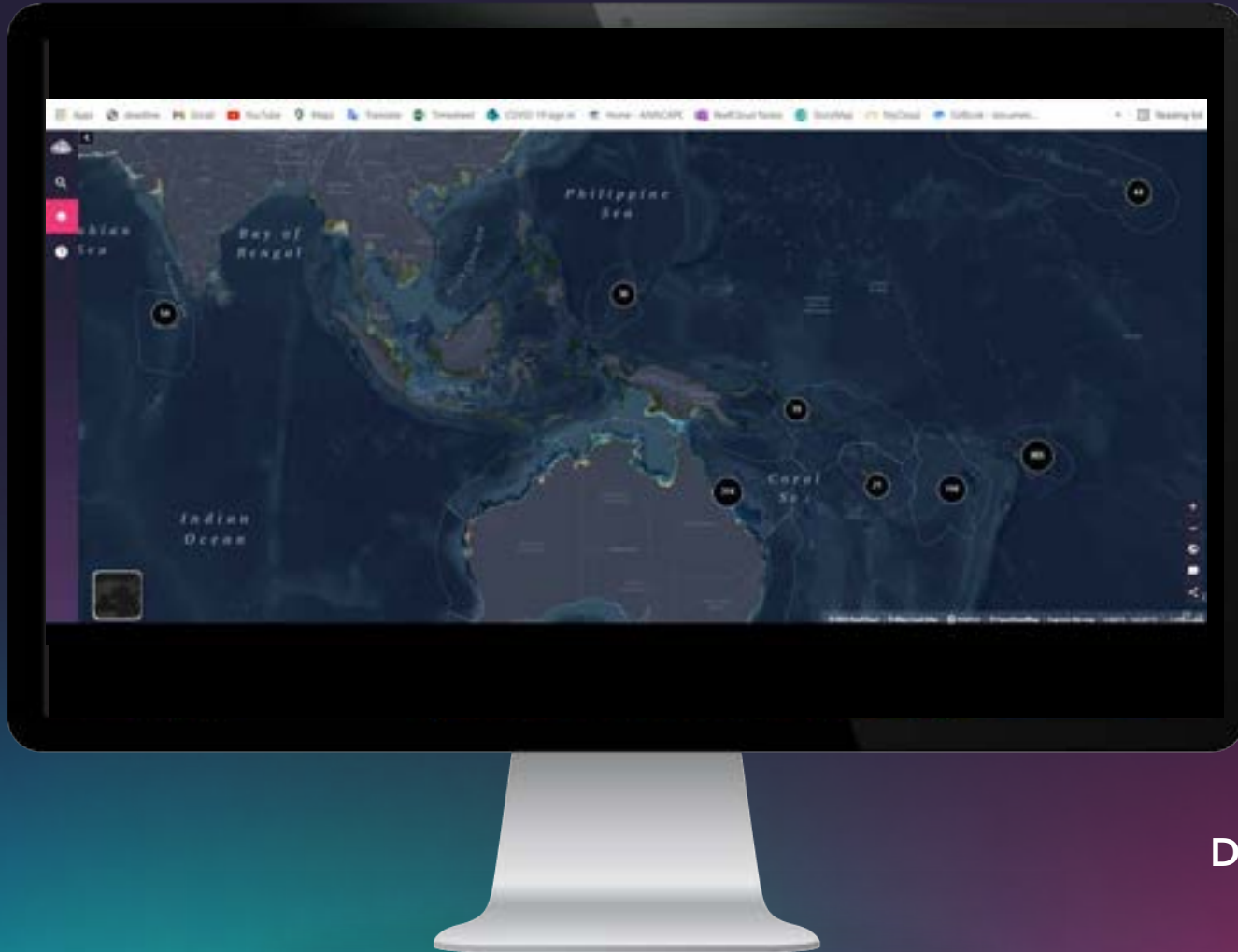
Palau International Coral Reef Centre



Tech to support integration and deliver insights



3. Automated
analysis and
reporting



Mapped monitoring locations

Temporal trends

Coral cover summaries

Benthic cover breakdown

Cyclone data

Thermal heat stress

Dive in - it's all free to explore at reefcloud.ai/dashboard

Pacific Coral Reef Action Plan

Shows the location of everyone's data

ReefCheck



Hard coral cover

Hard coral cover measures the general health of a reef and serves as a measure of the proportion of reef surface covered by live hard coral.

Hard coral cover map legend



Hard coral cover trend

In 2021, the average hard coral cover for **Fiji Islands** was estimated at **33.8%**, ranging from **15.37%** to **55.76%**.

Shows trends in reef health in context of environmental drivers



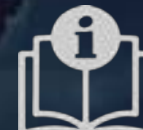
Data synthesis



MERI



AI advances



Manuals



Tutorials



Training



Still evolving

- Scalable and inclusive monitoring of reefs
- Democratisation of knowledge
- Faster and more efficient delivery of science



Management
and storage of
photo data



Analyse with
manual and AI
tagging



Automated
analysis and
reporting



Australian Government
Department of Foreign Affairs and Trade

"We're trying to use AI not just to making monitoring more efficient—we're making it more equitable."

Join us!
www.reefcloud.ai

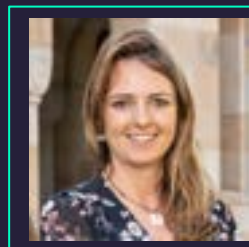


**Manuel
Gonzalez-
Rivero**

Project Lead

m.gonzalezrivero@aims.gov.au
support@reefcloud.ai

ReefCloud Science Team



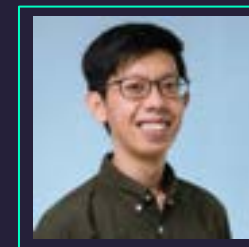
Emma
Kennedy



Ashton
Gainsford



Yashika
Nand



Samuel
Chan

An ongoing team effort...

We are grateful to our collaborators and invite you to come and join us!

Collaborations

We partner with organizations that **enhance ReefCloud's capabilities and reach**. These partners include:

- Scientific Partners to test and modify ReefCloud's field utility
- Collaborators for communications and connections
- Technical Partners for scaling ReefCloud's functionality
- Funding Partners to sustain efforts to popularize and enhance ReefCloud

Our partners

